

Abiete 2 Apartments

Description

Abiete 2 apartments offer an exceptional living experience for those seeking a contemporary apartment in Paphos. Situated in the beautiful residential area of Universal, these one and two-bedroom apartments are just a short distance from the city centre, providing residents with easy access to all the local amenities.

This stunning four-story building features spacious apartments, with two-bedroom apartments available on the first floor and a mix of one- and two-bedroom apartments on the second and a two-bedroom apartment on the third floor. The fourth floor of the building is occupied by a gorgeous communal swimming pool, offering residents a place to relax and soak up the sun while enjoying breathtaking views of the city and surrounding scenery.

The apartments are designed with comfort and style in mind, equipped with modern and top-of-the-range fittings and finishes, providing residents with everything they need for a comfortable and fulfilling lifestyle. Additionally, each apartment has its own dedicated parking area and allocated storage units, ensuring that residents' vehicles and belongings are always secure.

If you're searching for a luxurious and contemporary apartment in the heart of Paphos, look no further than Abiete 2 apartments in Universal.



3D images are samples of the specific project and do not necessarily indicate the final result.



Location & Amenities



Beach
2 km



Education
400 m



Supermarket
350 m



Medical Care
1 km



Airport
14 km



**Click the pin
for directions**



3D images are samples of the specific project and do not necessarily indicate the final result.

Floor Levels	3 + RF
Covered Internal Area	101, 102, 201 & 301 75 m ² 202 55 m ²
Covered Veranda	101 15 m ² 102 & 202 17 m ² 201 16 m ² 301 22 m ²
Uncovered Veranda	202 19 m ²
Bedrooms	101, 102, 201 & 301 2 Bed 202 1 Bed
Bathroom	101, 102 & 201 2 Bath 202 1 Bath
Storage Room	Yes
Swimming Pool	Communal (RF)
Parking Space	Allocated Parking

3D Views | Exterior | *Sample*



3D images are samples of the specific project and do not necessarily indicate the final result.

3D Views | Interior | *Sample*



3D images are samples of the specific project and do not necessarily indicate the final result.

3D Views | Interior | *Sample*



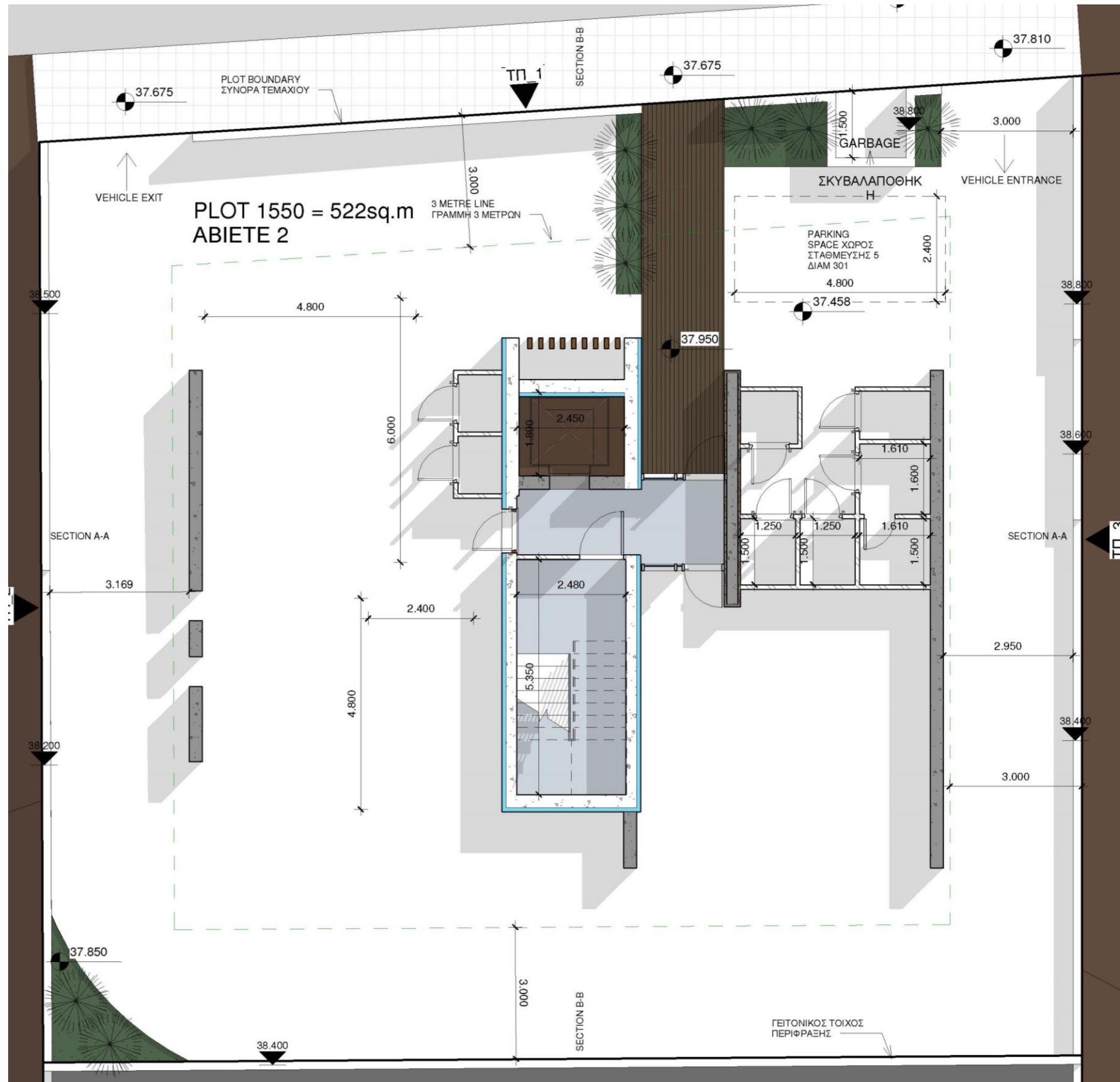
3D images are samples of the specific project and do not necessarily indicate the final result.

3D Views | Exterior | *Sample*



3D images are samples of the specific project and do not necessarily indicate the final result.

Ground Floor



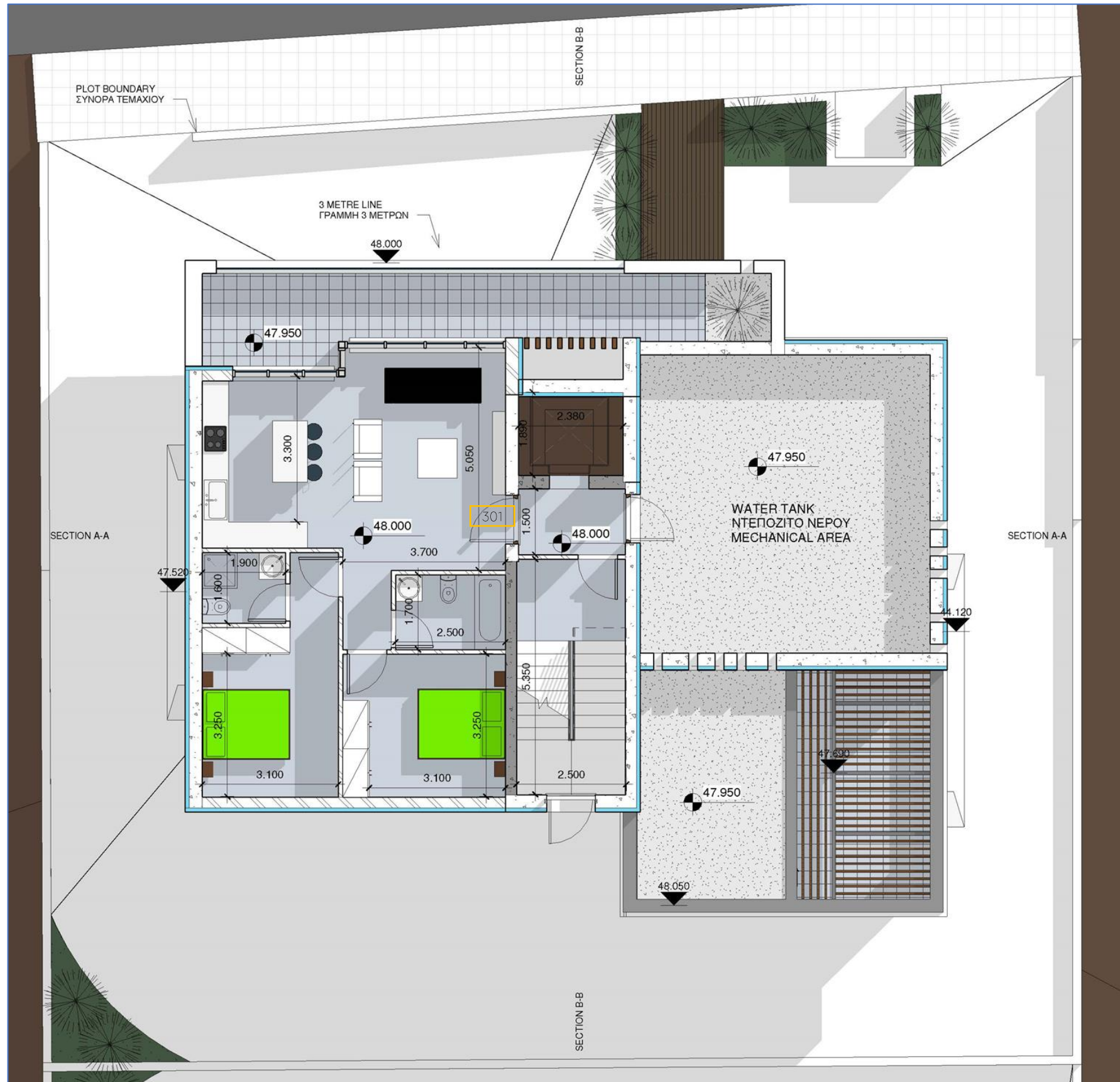
1st Floor | Apt. 101 & 102



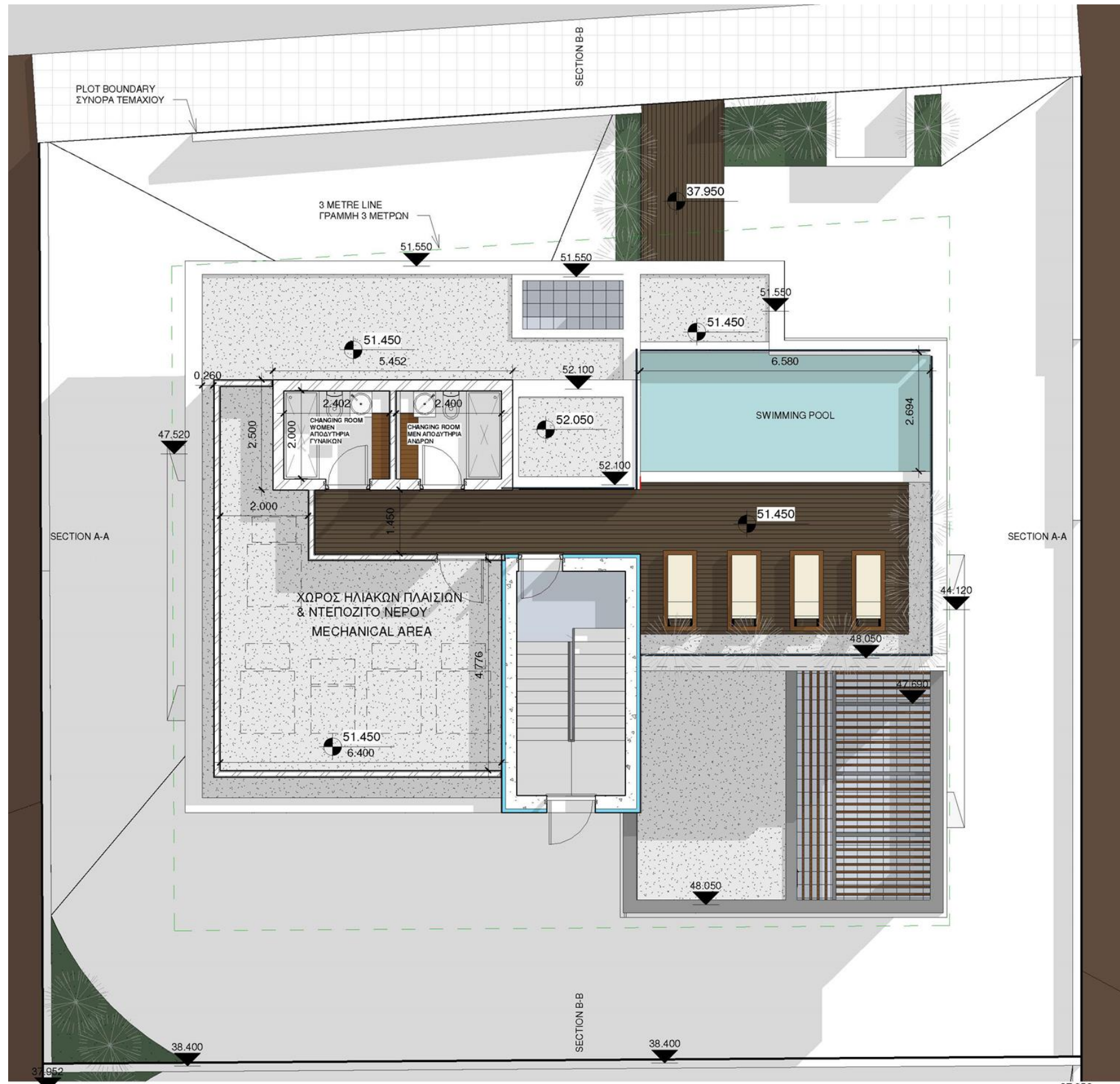
2nd Floor | Apt. 201 & 202



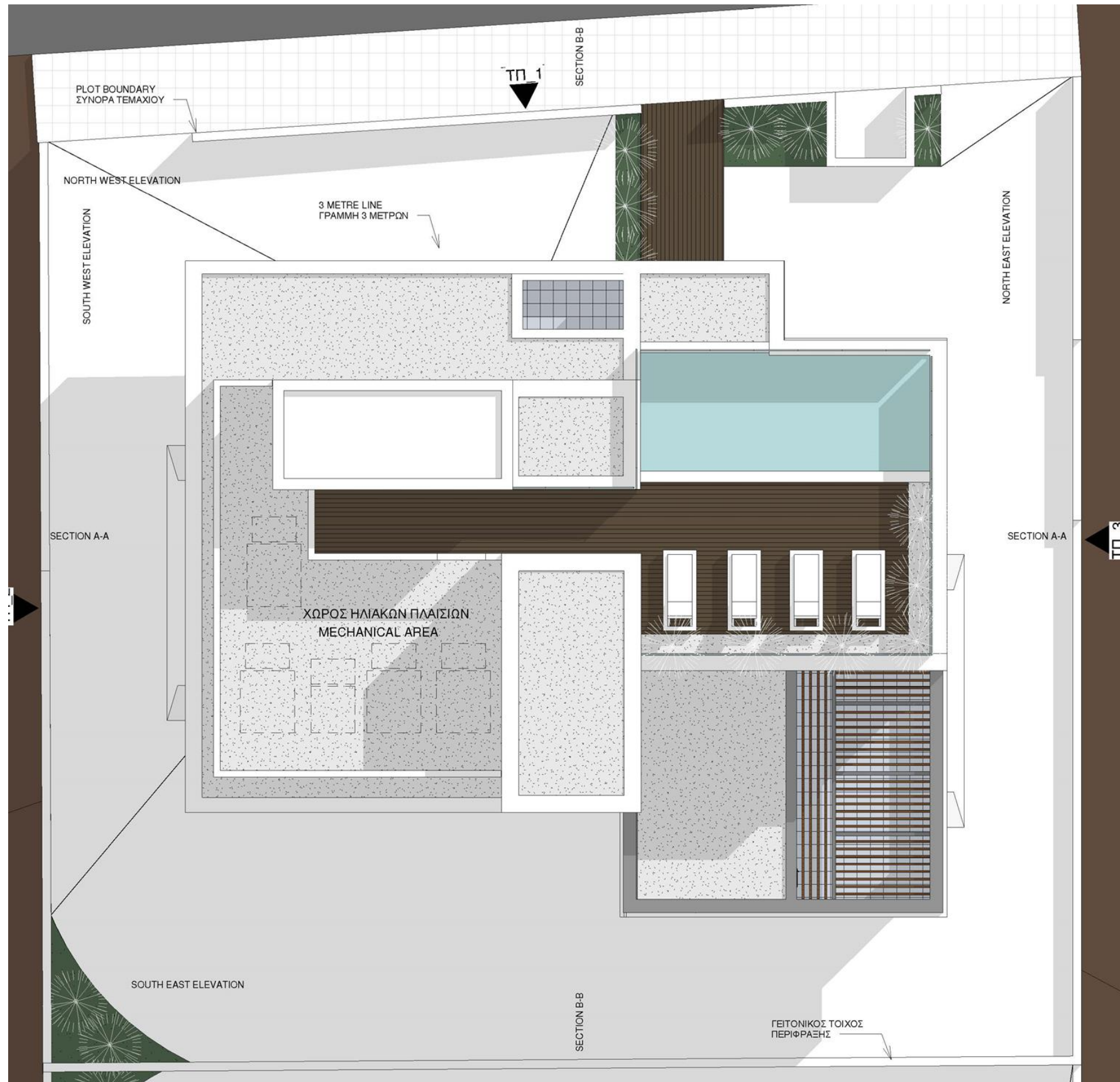
3rd Floor | Apt. 301



Roof Garden



Roof Top



Northwest Elevation



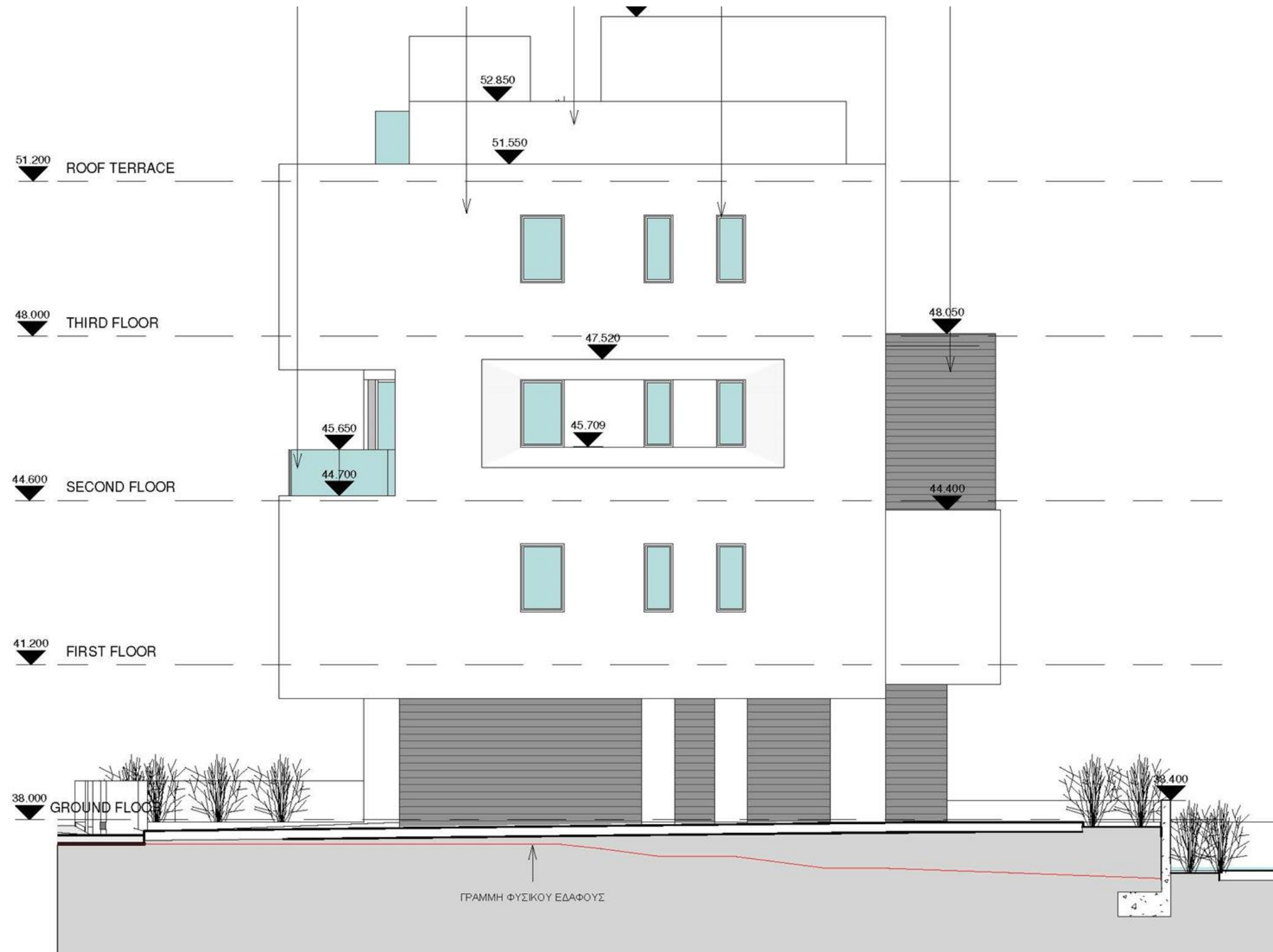
Northeast Elevation



Southeast Elevation



Southwest Elevation





External Finishes

External walls are partly with fair face concrete

External walls are partly with wood cladding

High-quality ceramic tiles on verandas and balconies

Landscaped common garden with irrigation system

Privately owned parking

Balustrade of laminated glass

Internal Finishes

High quality entrance doors

Imported marble on floors, stairs and bathrooms

Top quality laminate and melamine wooden cupboards doors and wardrobes

High quality kitchen worktops

Parquet flooring in all bedrooms

Double glazed windows with aluminum frames

Hansgrohe mixers

Duravit toilets with wall-mounted geberit flush system

Other Finishes

Lift to all floors

Solar system for heating water

Pressurized water system

Provision for air – condition System

Fully loaded package – (optional | extra cost)

Underfloor heating – (optional | extra cost)

Alarm Provision System

Energy efficiency – B