

WE LISTEN

WE GUIDE

WE BUILD

# ELITE

## RESIDENCES

Paphos, Cyprus

DISCOVER

40

**UNIQUE LUXURIOUS RESIDENCES**

# ELITE RESIDENCES INTRO

**01** Elite Residences, a luxury villa project, offers a rare opportunity for discerning investors and those seeking an investment in an exclusive community. Nestled near the tranquil coastline, this exclusive, gated community comprises 40 magnificent villas designed to perfection.

**02** Each villa is equipped with advanced features like VRF and underfloor heating, ensuring a comfortable living environment throughout the year. The commitment to high-quality construction is evident in every detail, promising enduring elegance.

**03** Security is a priority with 24/7 surveillance, providing residents with peace of mind. Beyond your doorstep, the sea and promenade are within walking distance, allowing you to savour the coastal ambiance and embrace the mediterranean lifestyle.





**04** Exclusive Clubhouse offers dining, relaxation options for our Elite Home owners and their Guests. With large plots and multiple villa configurations, you can customize your dream home to suit your unique lifestyle.

**05** Come experience a life of serenity and style in a world-class environment where luxury knows no bounds. Elite Residences is not just a place to reside; it's a place to thrive.

34°44'

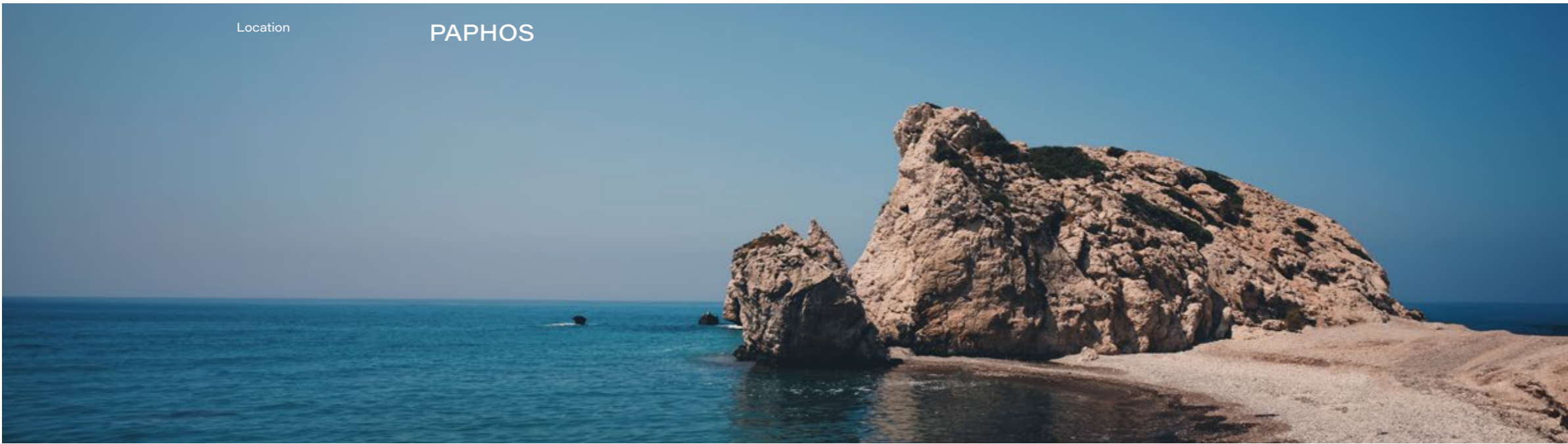
32°26'

48.9"N  
01.0"E

- Elite Residences represents more than just a residence; it's an exclusive investment opportunity and a gateway to a life of luxury and tranquility. Your coastal dream home is here.



All visualizations of the projects are 3D-artistic renders. The final product may vary slightly.



# PAPHOS

ABOUT

The town of Paphos, located at the western end of the island, is considered the jewel of Cyprus. The mild climate, vibrant atmosphere, the variety seen in the landscape, and the historic sites that define the region, form an irresistible attraction.

The city of Paphos has a remarkable history which can be traced back 2300 years. Throughout the centuries, the city has built a spectacular cultural heritage and has played a significant part in the development and history of Cyprus.

In ancient times, Paphos was the capital of Cyprus for 600 years and its archaeological legacy is such that UNESCO has the whole town on its World Cultural Heritage list and, in recognition of this, Paphos was awarded the European Capital of Culture in 2017.

In 2023 Paphos was awarded Capital of Smart Tourism by the EU Commission and is known as the top tourist destination on the island.

---

Location

GEROSKIPOU



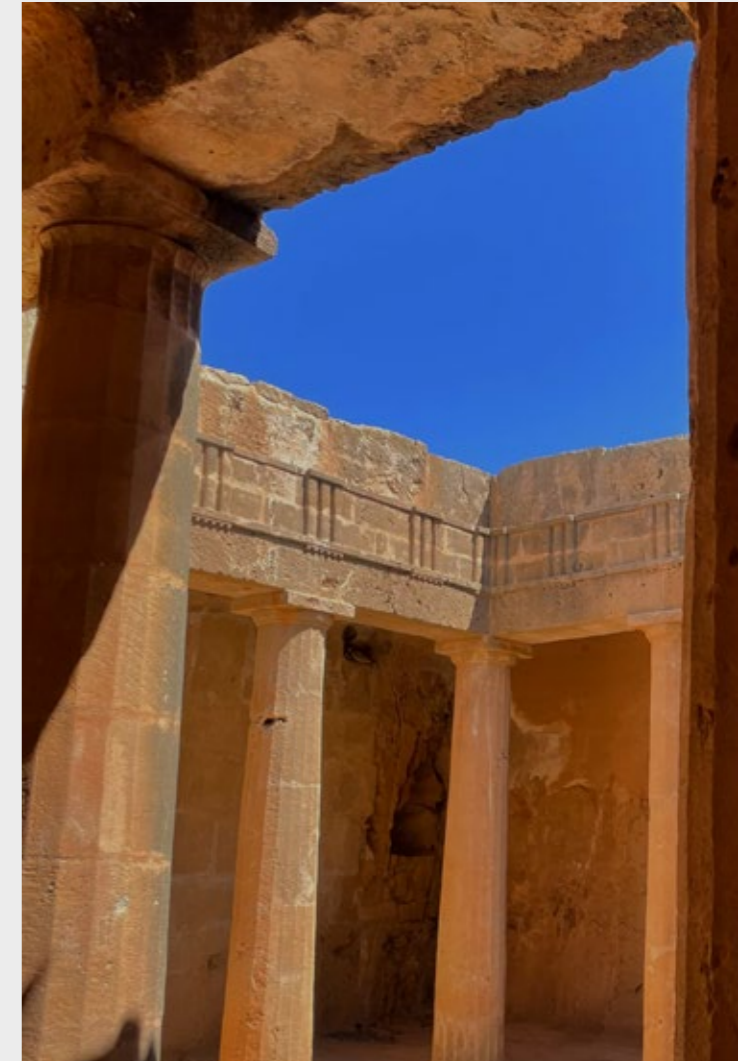
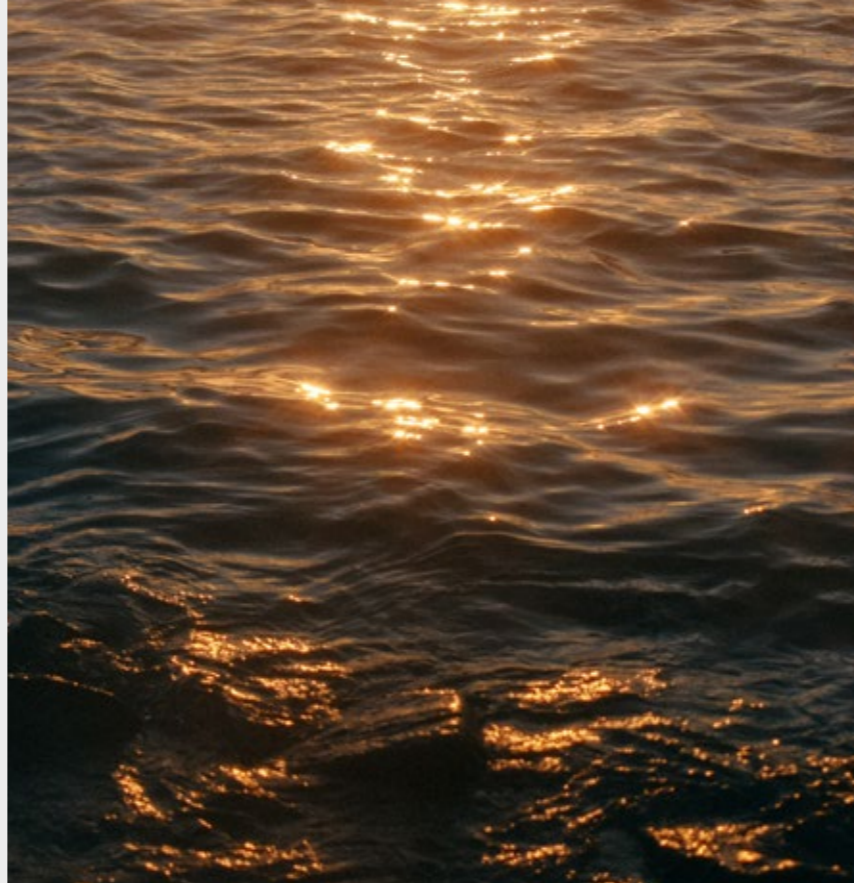
# GEROSKIPOU

ABOUT

Geroskipou, a captivating area within the vibrant city of Paphos, Cyprus, beckons you to embrace a remarkable lifestyle surrounded by natural splendor.

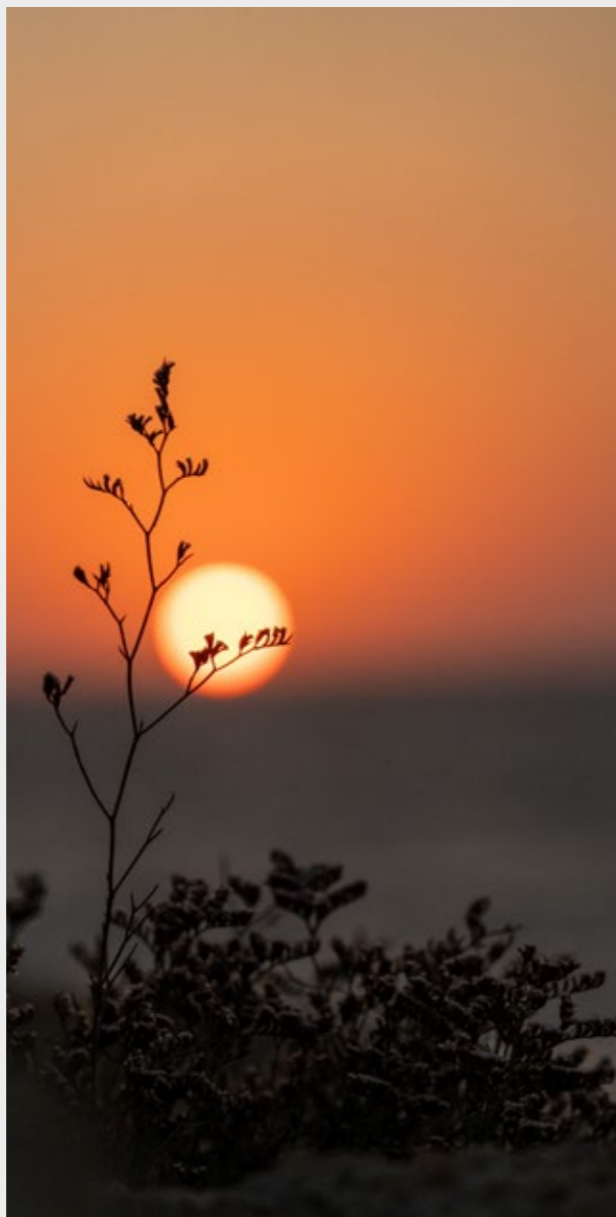
This picturesque location seamlessly blends tradition with modern convenience, ensuring a truly enriching living experience. Geroskipou offers a wide range of essential amenities, esteemed educational institutions, and an array of delectable dining options to satisfy every palate.

Discover a mesmerising panorama of the Mediterranean Sea from this idyllic retreat, where breathtaking views unfold before your eyes. Immerse yourself in the captivating history, embrace the welcoming community, and surrender to the irresistible allure of Geroskipou.





" Paphos, where ancient myths converge with breathtaking landscapes, echoing the birthplace of Aphrodite, the goddess of beauty, in every enchanting corner.

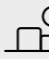






# DISTANCES KEY


 Beach  
1 min | 550 m


 Private Clinic  
1 min | 650 m


 Paphos mall  
5 min | 2.6 km


 Highway  
7 min | 4.4 km

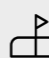
 Harbour  
2 min | 2.6 km

 General Hospital  
10 min | 5 km

 Grocery Store  
3 min | 2 km

 International Airport  
17 min | 13 km

 International School  
10 min | 5 km

 Golf Course  
8 min | 5.5 km

THE CLUBHOUSE



**ENTERING LUXURY**

---

# SPECIAL FEATURES KEY





**01** VRF TECHNOLOGY

---

**03** THERMAL ALUMINIUM WINDOWS

---

**05** PHOTOVOLTAIC PROVISIONS

---

**07** CUSTOMIZABLE INTERIORS

---

**09** CUSTOM CABINETS (LOCALLY PRODUCED)

---

**11** LAMINATED FLOORS IN ALL BEDROOMS

---

**13** CLOSE PROXIMITY TO FACILITIES

---

**15** QUIET AREA

---

**17** ROOF TERRACE

---

**19** PLAYGROUND

---

**21** LARGE GREEN AREAS

**02** UNDERFLOOR HEATING

---

**04** SOLAR-POWERED WATER BOILER

---

**06** PRIVATE PARKING

---

**08** CUSTOM WARDROBES

---

**10** TILED FLOORS IN LIVING AREA

---

**12** ENERGY EFFICIENCY CLASS A,  
ENERGY EFFICIENT DESIGN

---

**14** AMENITIES

---

**16** WALKING DISTANCE TO THE SEA

---

**18** CLUBHOUSE

---

**20** GATED COMMUNITY WITH  
CCTV SECURITY FEATURE

---

**22** CLOSE TO PROMENADE



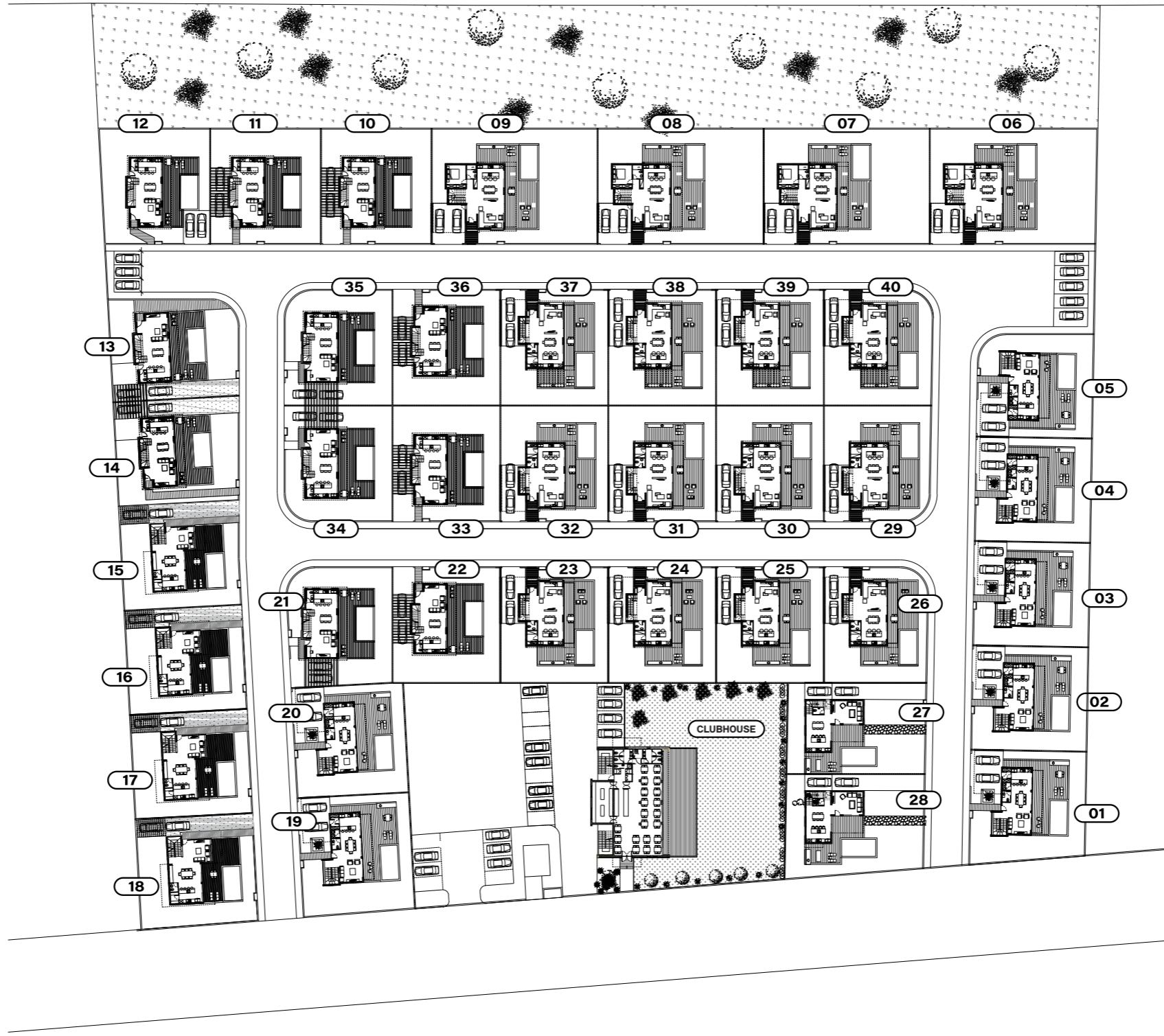
**IMMERSE YOURSELF IN LUXURY**

Navigate through the 3D Spinhouse of Elite Residences and pick your preferred Elite Villa



MASTER PLAN

# OVERVIEW



ELITE  
RESIDENCES



- 01
  - 02
  - 03
  - 04
  - 05
  - 06
  - 07
  - 08
  - 09
  - 10
  - 11
  - 12
  - 13
  - 14
  - 15
  - 16
  - 17
  - 18
  - 19
  - 20
  - 21
  - 22
  - 23
  - 24
  - 25
  - 26
  - 27
  - 28
  - 29
  - 30
  - 31
  - 32
  - 33
  - 34
  - 35
  - 36
  - 37
  - 38
  - 39
  - 40
- CLUBHOUSE

# INFORMATION

GENERAL

	TYPE	BEDROOMS	BATHROOMS	PLOT SIZE	COVERED INTERNAL AREA	COVERED VERANDA AREA	COVERED GARAGE	TOTAL COVERED AREA	SWIMMING POOL	ROOF TERRACE
Villa 01	A*	3	3	398	169.6	40	39	248.6	3x6	18
Villa 02	A*	3	3	378	169.6	40	39	248.6	3x6	18
Villa 03	A*	3	3	378	169.6	40	39	248.6	3x6	18
Villa 04	A*	3	3	378	169.6	40	39	248.6	3x6	18
Villa 05	A*(M)	3	3	371	169.6	40	39	248.6	3x6	18
Villa 06	F	5	3	604	225.7	42.6	30	298.3	3x6	46.8
Villa 07	E	4	3	600	207.2	43.8	30	281	3x6	46.8
Villa 08	E	4	3	600	207.2	43.8	30	281	3x6	46.8
Villa 09	F	5	3	600	225.7	42.6	30	298.3	3x6	46.8
Villa 10	H	3	3	400	176.8	39.76	-	216.56	3x6	20
Villa 11	H	3	3	400	176.8	39.76	-	216.56	3x6	20
Villa 12	H	3	3	394	176.8	39.76	-	216.56	3x6	20
Villa 13	H*	3	3	397	176.8	39.76	-	216.56	3x6	20
Villa 14	H	3	3	402	176.8	39.76	-	216.56	3x6	20
Villa 15	D	3	3	386	189.3	39.5	-	228.8	3x6	39
Villa 16	D	3	3	383	189.3	39.5	-	228.8	3x6	39
Villa 17	D	3	3	383	189.3	39.5	-	228.8	3x6	39
Villa 18	D	3	3	403	189.3	39.5	-	228.8	3x6	39
Villa 19	A	3	3	412	177	40.1	39	256.1	3x6	18.5
Villa 20	A	3	3	383	177	40.1	39	256.1	3x6	18.5



	TYPE	BEDROOMS	BATHROOMS	PLOT SIZE	COVERED INTERNAL AREA	COVERED VERANDA AREA	COVERED GARAGE	TOTAL COVERED AREA	SWIMMING POOL	ROOF TERRACE
Villa 21	<b>G</b>	<b>3</b>	<b>3</b>	<b>381</b>	<b>178.5</b>	<b>41.29</b>	<b>-</b>	<b>219.79</b>	<b>3x6</b>	<b>20</b>
Villa 22	<b>H*</b>	<b>3</b>	<b>3</b>	<b>390</b>	<b>176.8</b>	<b>39.76</b>	<b>-</b>	<b>216.56</b>	<b>3x6</b>	<b>20</b>
Villa 23	<b>B</b>	<b>3</b>	<b>3</b>	<b>390</b>	<b>184.55</b>	<b>38</b>	<b>31</b>	<b>253.55</b>	<b>3x6</b>	<b>40</b>
Villa 24	<b>B</b>	<b>3</b>	<b>3</b>	<b>390</b>	<b>184.55</b>	<b>38</b>	<b>31</b>	<b>253.55</b>	<b>3x6</b>	<b>40</b>
Villa 25	<b>B</b>	<b>3</b>	<b>3</b>	<b>390</b>	<b>184.55</b>	<b>38</b>	<b>31</b>	<b>253.55</b>	<b>3x6</b>	<b>40</b>
Villa 26	<b>B</b>	<b>3</b>	<b>3</b>	<b>370</b>	<b>184.55</b>	<b>38</b>	<b>31</b>	<b>253.55</b>	<b>3x6</b>	<b>40</b>
Villa 27	<b>C</b>	<b>3</b>	<b>3</b>	<b>393</b>	<b>157</b>	<b>33.2</b>	<b>14.4</b>	<b>204.6</b>	<b>3x6</b>	<b>-</b>
Villa 28	<b>C</b>	<b>3</b>	<b>3</b>	<b>433</b>	<b>157</b>	<b>33.2</b>	<b>14.4</b>	<b>204.6</b>	<b>3x6</b>	<b>-</b>
Villa 29	<b>B*</b>	<b>3</b>	<b>3</b>	<b>381</b>	<b>190.45</b>	<b>38</b>	<b>31</b>	<b>259.45</b>	<b>3x6</b>	<b>43</b>
Villa 30	<b>B*</b>	<b>3</b>	<b>3</b>	<b>390</b>	<b>190.45</b>	<b>38</b>	<b>31</b>	<b>259.45</b>	<b>3x6</b>	<b>43</b>
Villa 31	<b>B*</b>	<b>3</b>	<b>3</b>	<b>390</b>	<b>190.45</b>	<b>38</b>	<b>31</b>	<b>259.45</b>	<b>3x6</b>	<b>43</b>
Villa 32	<b>B*</b>	<b>3</b>	<b>3</b>	<b>390</b>	<b>190.45</b>	<b>38</b>	<b>31</b>	<b>259.45</b>	<b>3x6</b>	<b>43</b>
Villa 33	<b>H</b>	<b>3</b>	<b>3</b>	<b>390</b>	<b>176.8</b>	<b>39.76</b>	<b>-</b>	<b>216.56</b>	<b>3x6</b>	<b>20</b>
Villa 34	<b>G*</b>	<b>3</b>	<b>3</b>	<b>386</b>	<b>178.5</b>	<b>41.29</b>	<b>-</b>	<b>219.79</b>	<b>3x6</b>	<b>20</b>
Villa 35	<b>G</b>	<b>3</b>	<b>3</b>	<b>386</b>	<b>178.5</b>	<b>41.29</b>	<b>-</b>	<b>219.79</b>	<b>3x6</b>	<b>20</b>
Villa 36	<b>H*</b>	<b>3</b>	<b>3</b>	<b>390</b>	<b>176.8</b>	<b>39.76</b>	<b>-</b>	<b>216.56</b>	<b>3x6</b>	<b>20</b>
Villa 37	<b>B</b>	<b>3</b>	<b>3</b>	<b>390</b>	<b>184.55</b>	<b>38</b>	<b>31</b>	<b>253.55</b>	<b>3x6</b>	<b>46</b>
Villa 38	<b>B**</b>	<b>3</b>	<b>3</b>	<b>390</b>	<b>196.4</b>	<b>38</b>	<b>31</b>	<b>265.4</b>	<b>3x6</b>	<b>46</b>
Villa 39	<b>B**</b>	<b>3</b>	<b>3</b>	<b>390</b>	<b>196.4</b>	<b>38</b>	<b>31</b>	<b>265.4</b>	<b>3x6</b>	<b>46</b>
Villa 40	<b>B</b>	<b>3</b>	<b>3</b>	<b>388</b>	<b>184.55</b>	<b>38</b>	<b>31</b>	<b>253.55</b>	<b>3x6</b>	<b>46</b>



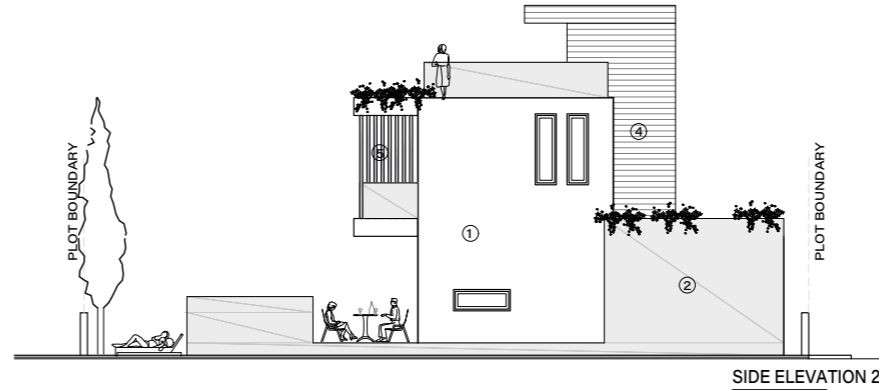
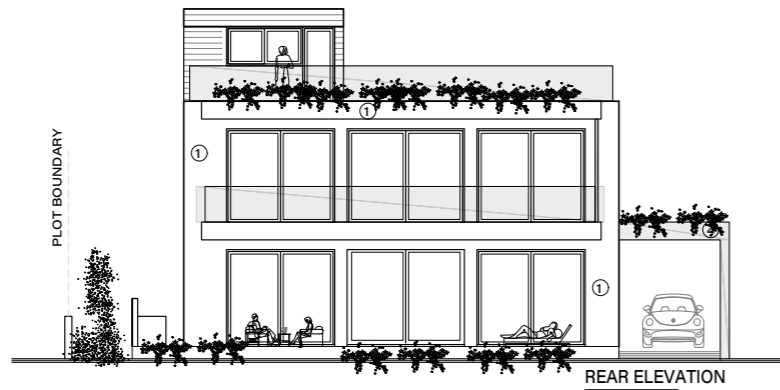
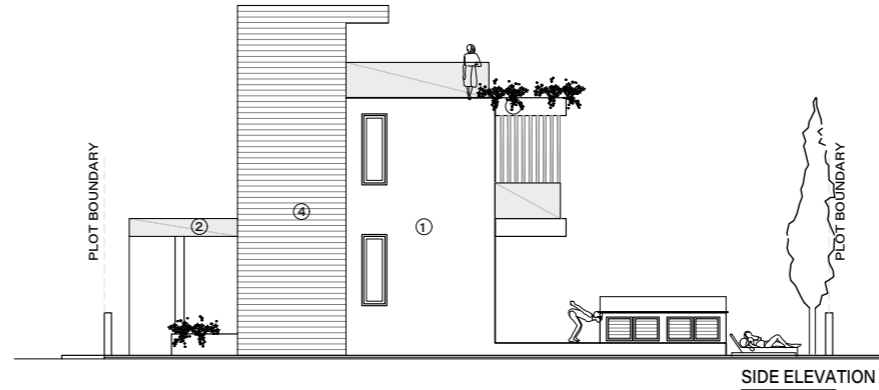
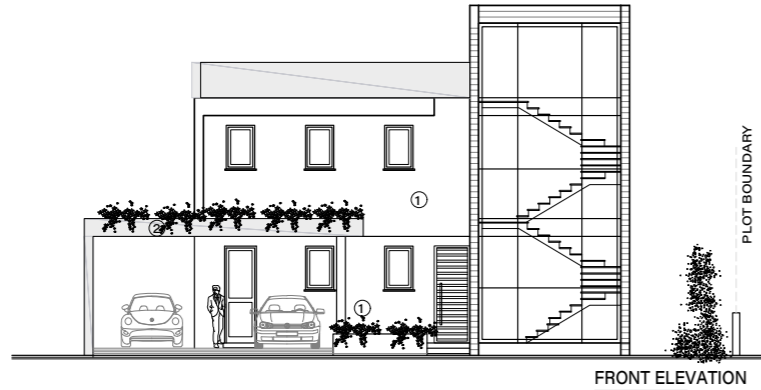


All visualizations of the projects are 3D-artistic renders. The final product may vary slightly.

# VILLA TYPE A

OVERVIEW

3 bedroom Villa



- |           |                       |           |                    |            |                                      |
|-----------|-----------------------|-----------|--------------------|------------|--------------------------------------|
| <b>01</b> | White render          | <b>05</b> | Louvers 5x20 cm    | <b>08A</b> | Glass balustrade (with sandblasting) |
| <b>02</b> | Grey render           | <b>06</b> | Aluminium cladding | <b>09</b>  | Green wall                           |
| <b>03</b> | Fair-face concrete    | <b>07</b> | Aluminium windows  | <b>10</b>  | Deck                                 |
| <b>04</b> | Board formed concrete | <b>08</b> | Glass balustrade   | <b>11</b>  | HPL                                  |
|           |                       |           |                    | <b>12</b>  | Timber cladding                      |





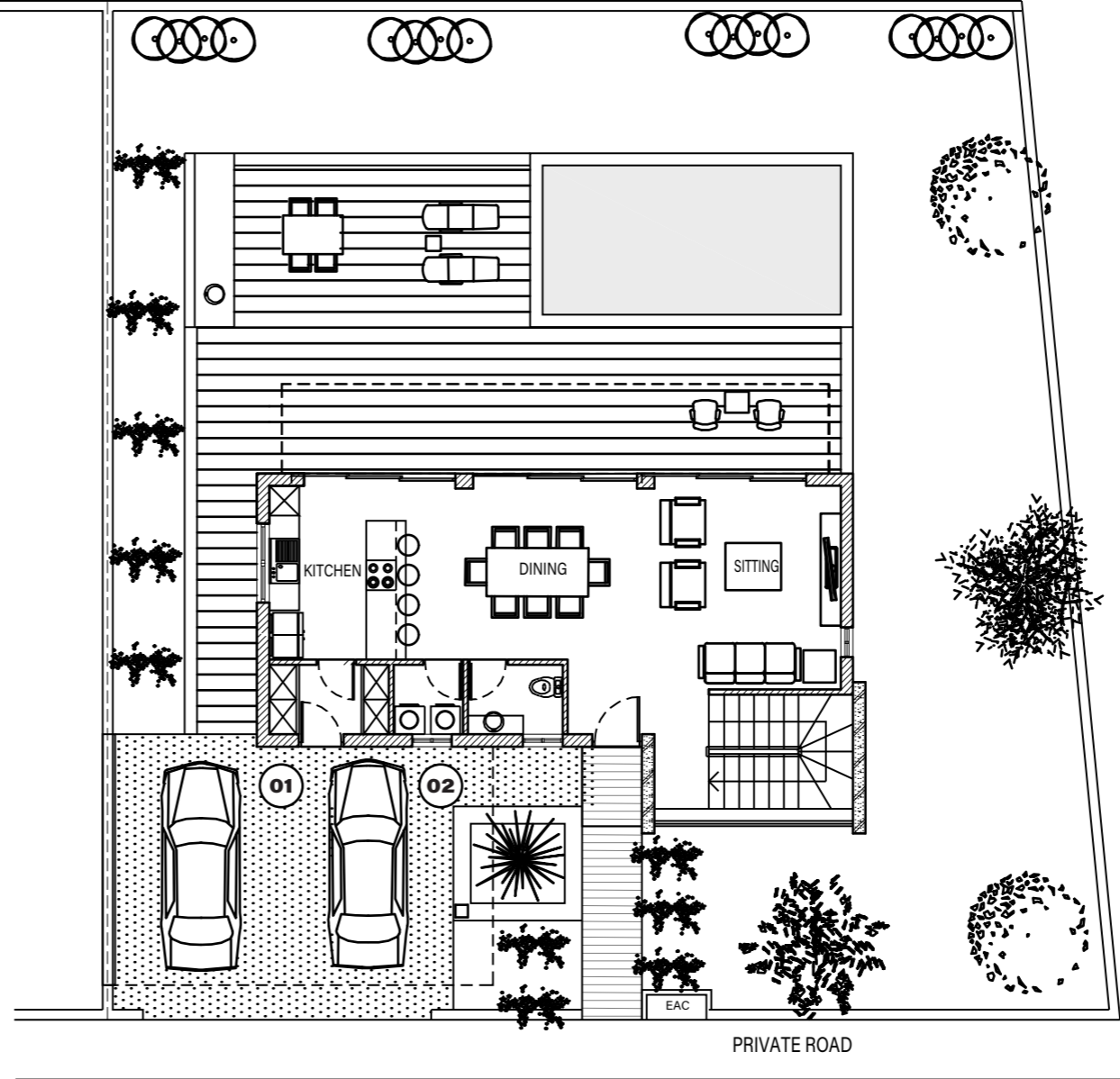
# VILLA TYPE A

OVERVIEW

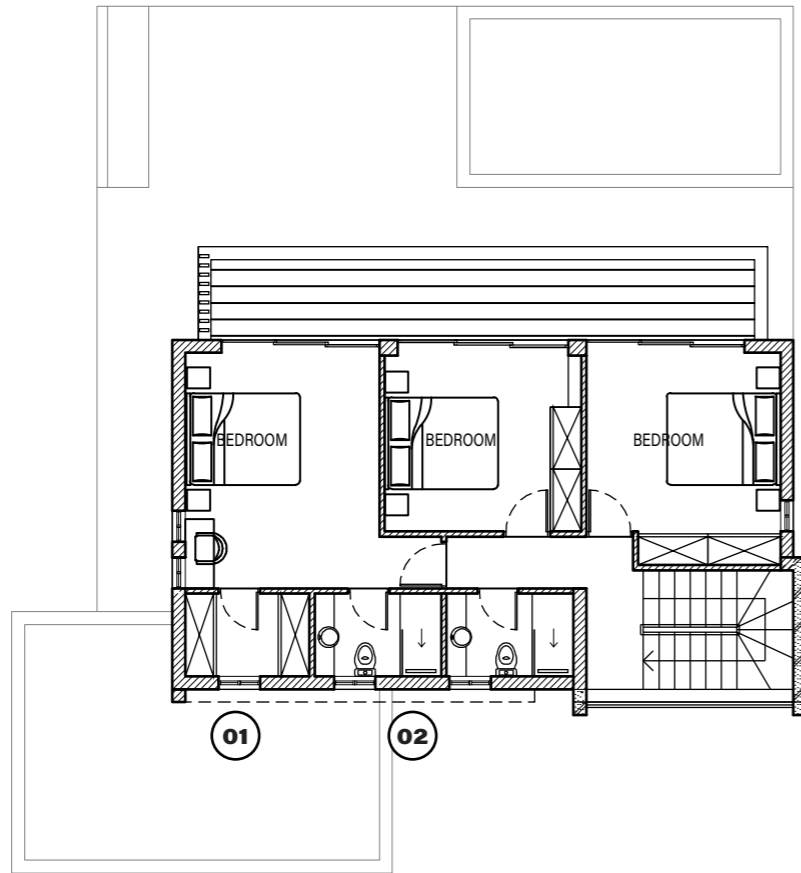
3 bedroom Villa

01 FOYER  
02 LAUNDRY

GROUND FLOOR

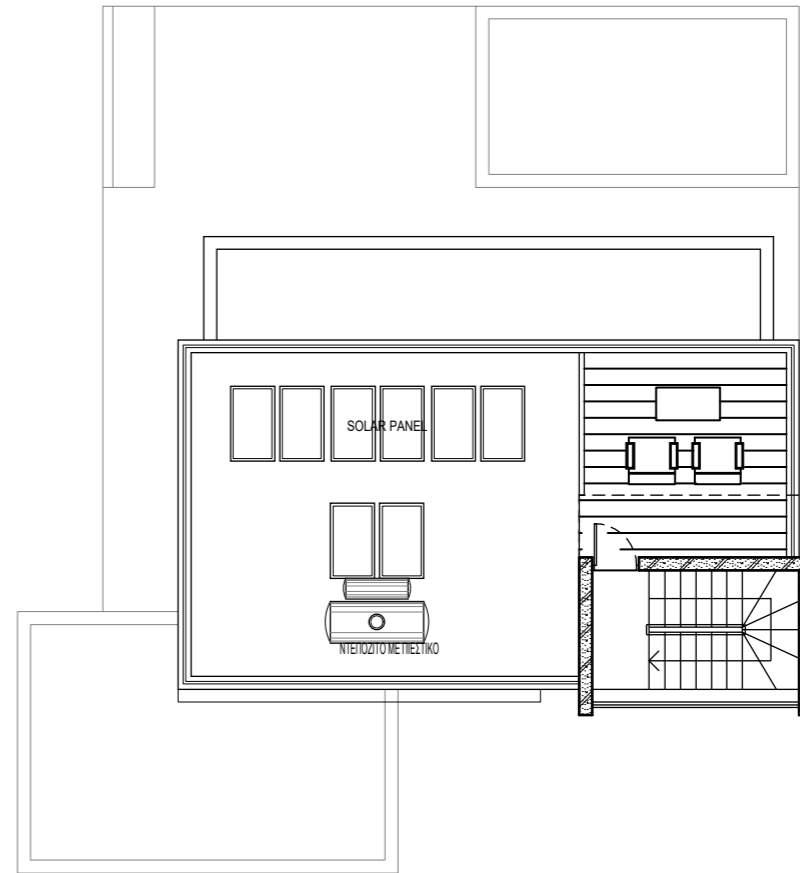


# PLANS



01 WALK-IN CLOSET  
02 EN-SUITE

1ST FLOOR PLAN

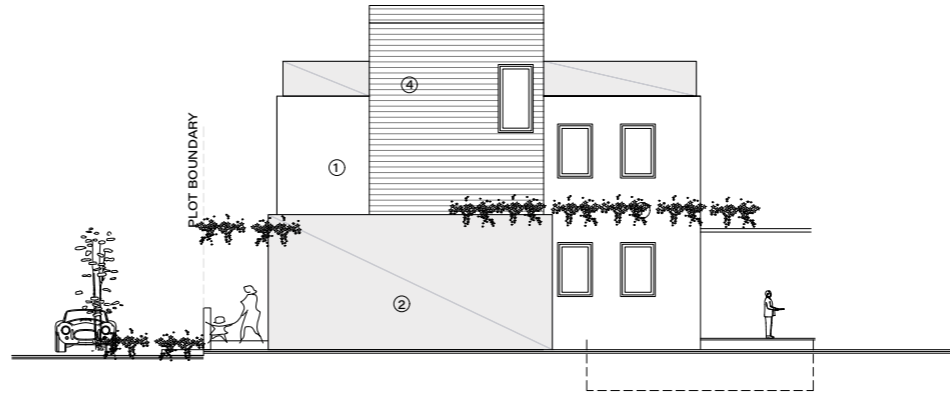
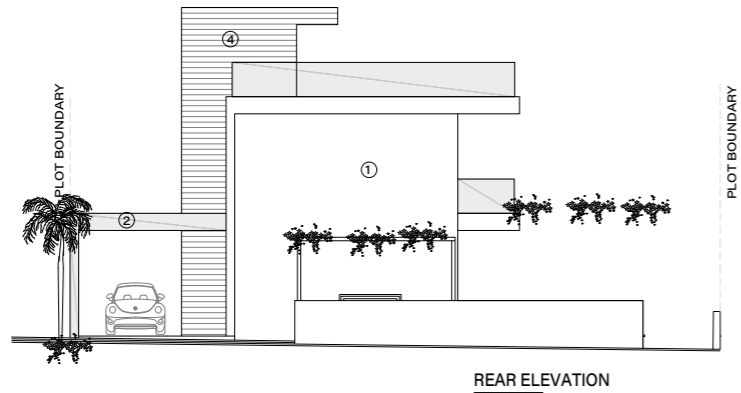
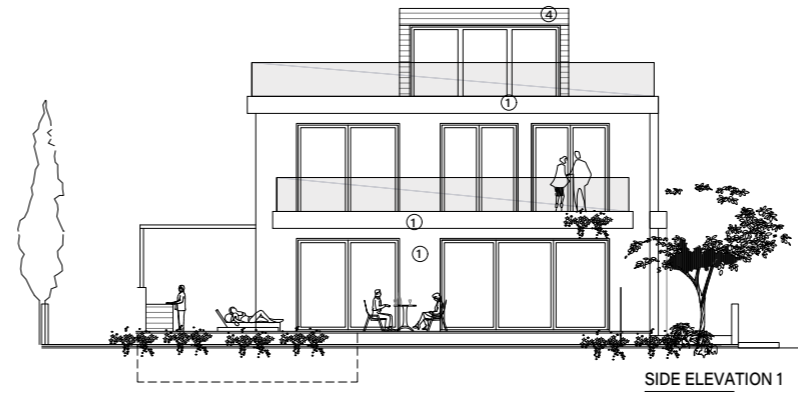
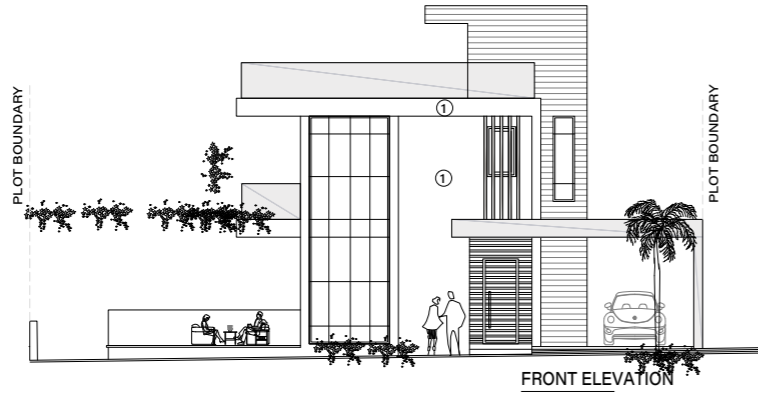


ROOF PLAN

# VILLA TYPE B

OVERVIEW

3 bedroom Villa



- O1** White render
- O2** Grey render
- O3** Fair-face concrete
- O4** Board formed concrete

- O5** Louvers 5x20 cm
- O6** Aluminium cladding
- O7** Aluminium windows
- O8** Glass balustrate

- O8A** Glass balustrate (with sandblasting)
- O9** Green wall
- O10** Deck
- O11** HPL
- O12** Timber cladding







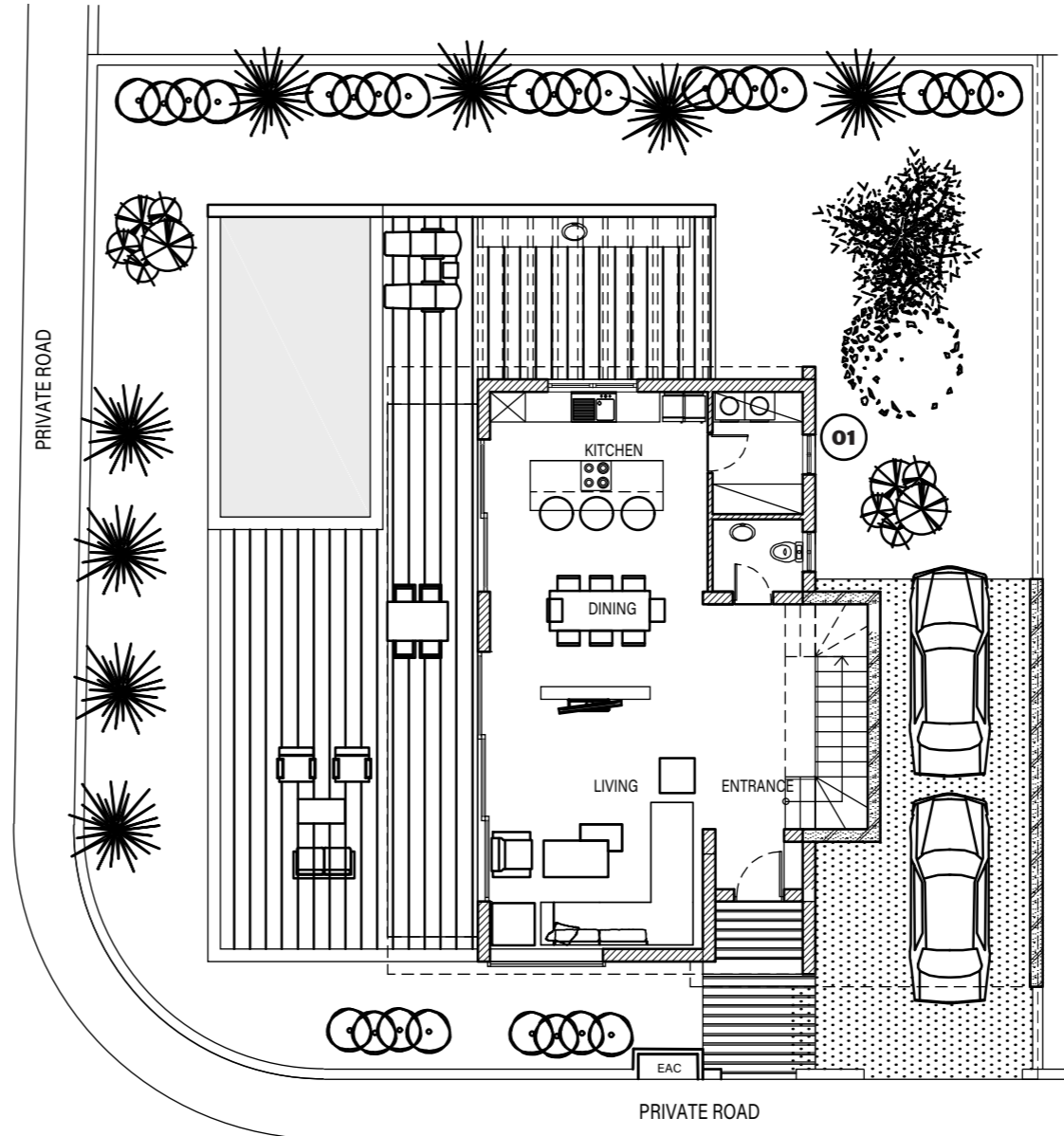
# VILLA TYPE B

OVERVIEW

3 bedroom Villa

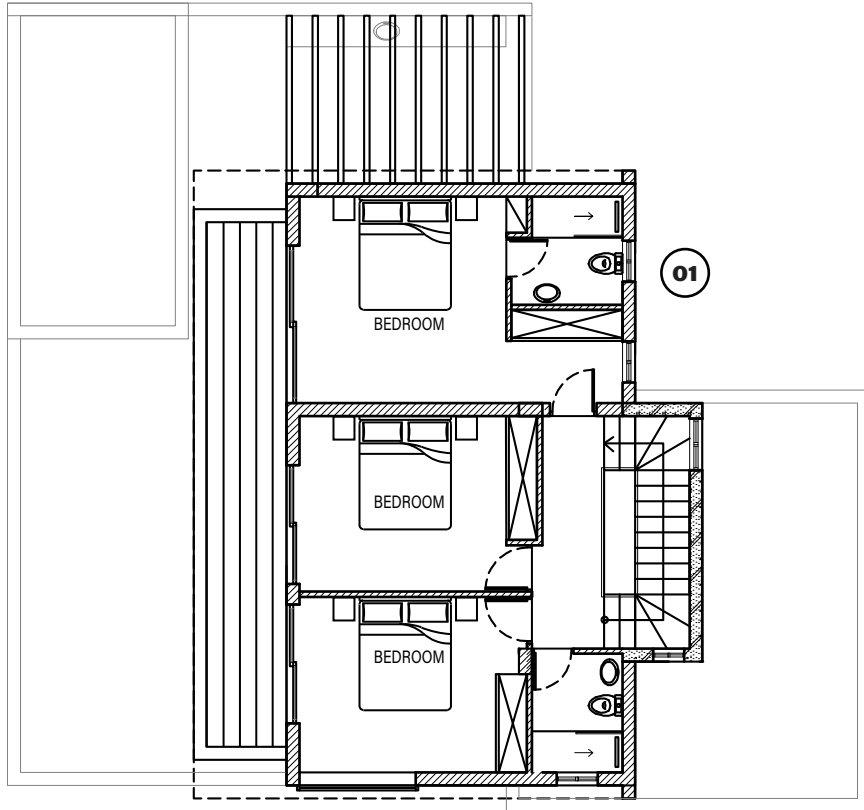
01 LAUNDRY

GROUND FLOOR



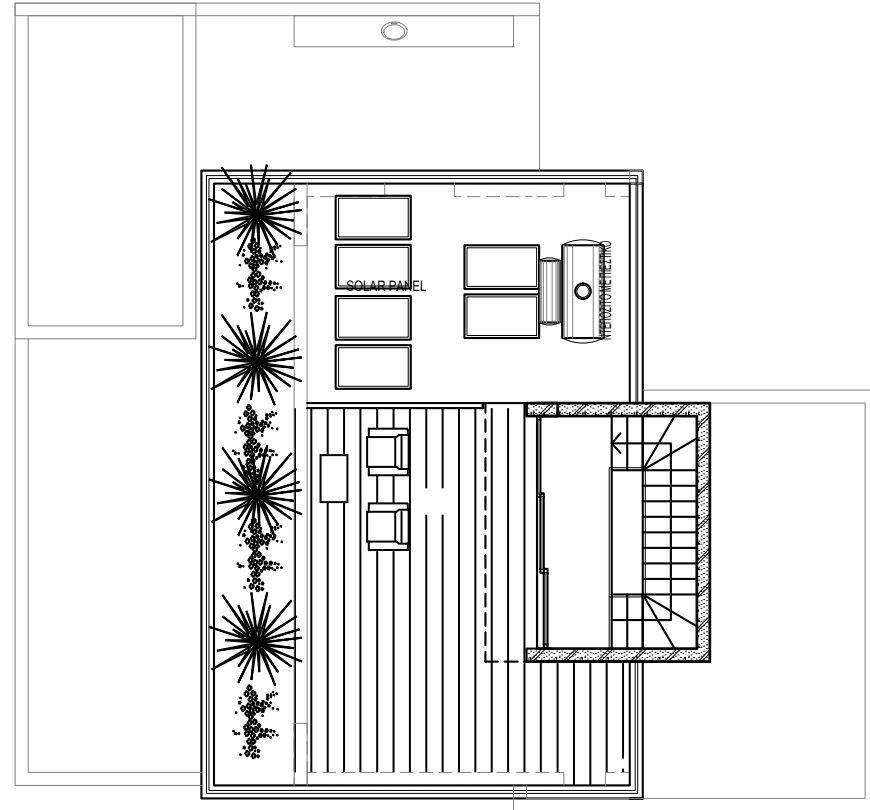
PRIVATE ROAD

# PLANS



01 EN-SUITE

1ST FLOOR PLAN

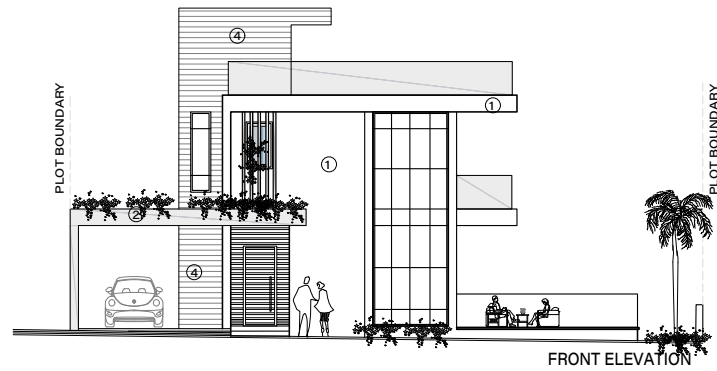


ROOF PLAN

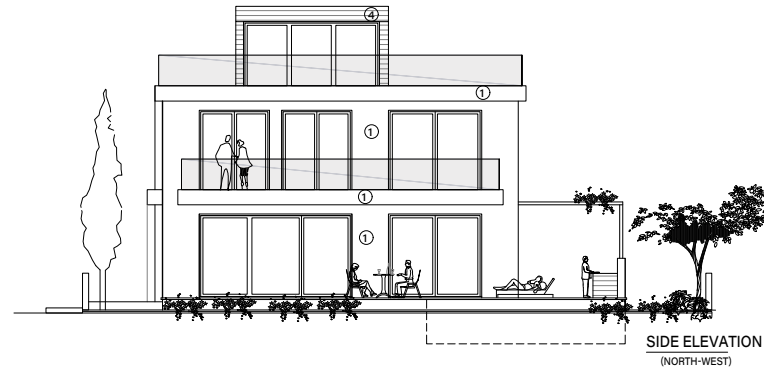
# VILLA TYPE B\*

OVERVIEW

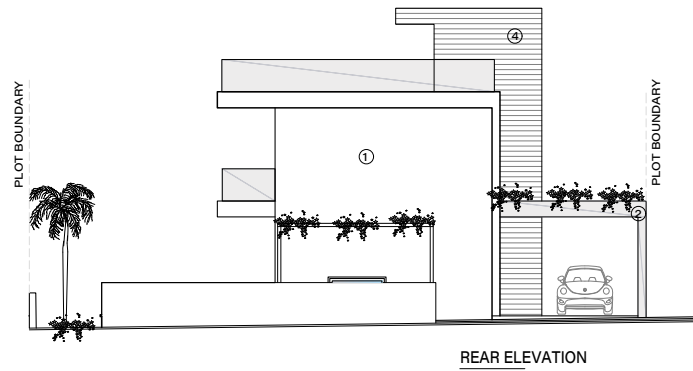
3 bedroom Villa



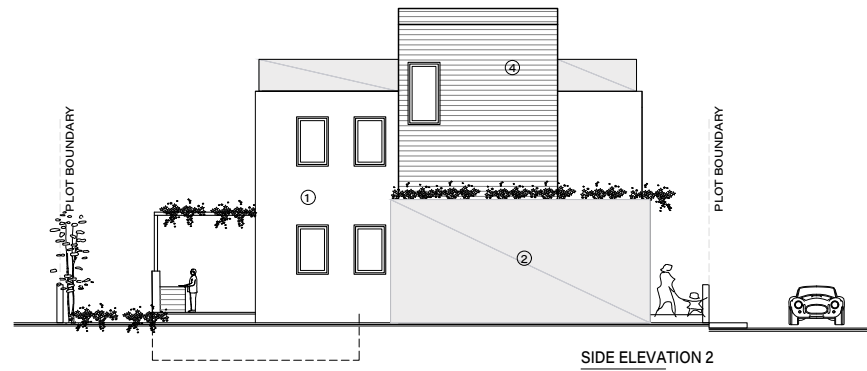
FRONT ELEVATION



SIDE ELEVATION 1  
(NORTH-WEST)



REAR ELEVATION



SIDE ELEVATION 2

- O1** White render
- O2** Grey render
- O3** Fair-face concrete
- O4** Board formed concrete

- O5** Louvers 5x20 cm
- O6** Aluminium cladding
- O7** Aluminium windows
- O8** Glass balustrate

- O8A** Glass balustrate (with sandblasting)
- O9** Green wall
- O10** Deck
- O11** HPL
- O12** Timber cladding





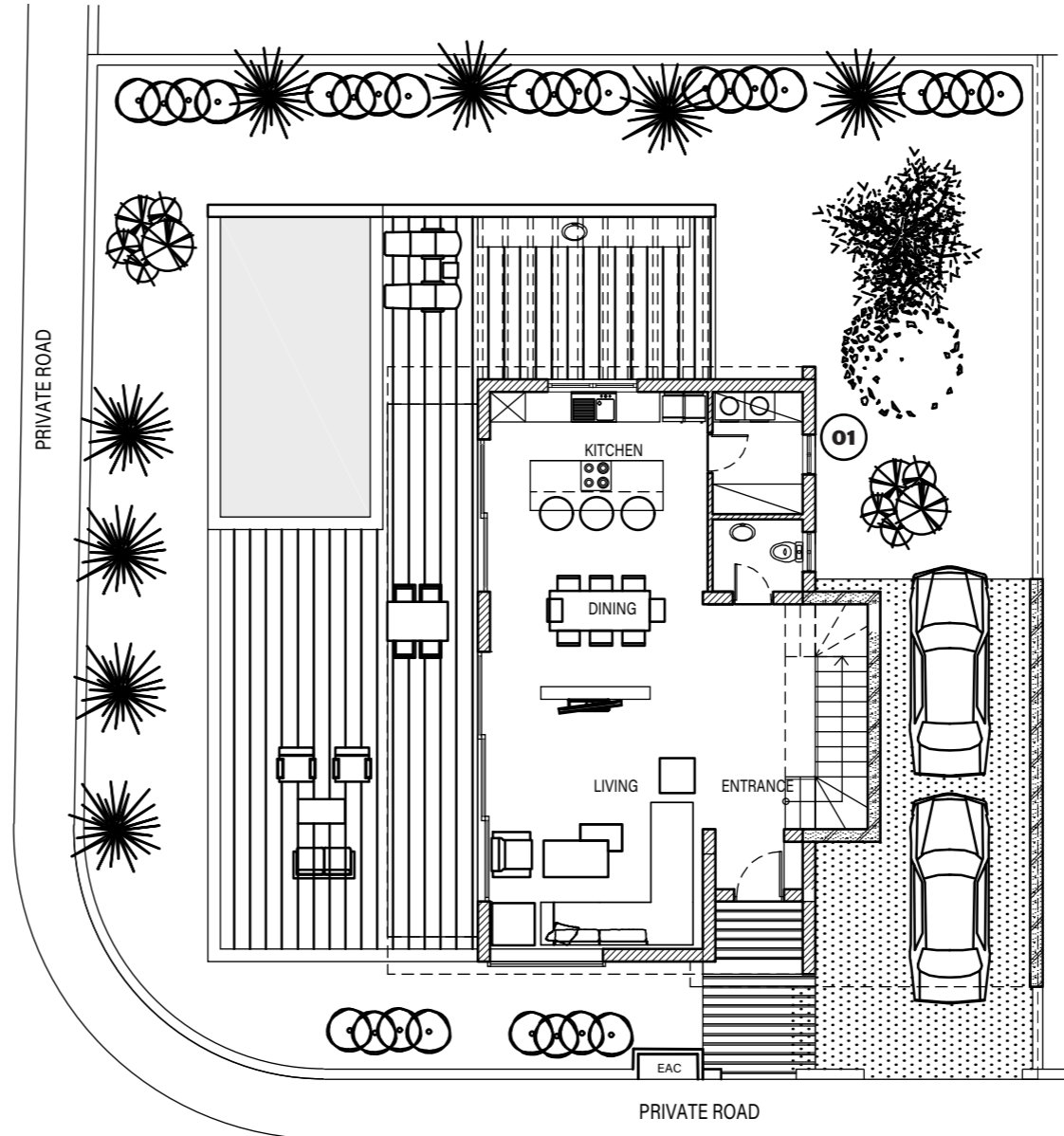
# VILLA TYPE B\*

OVERVIEW

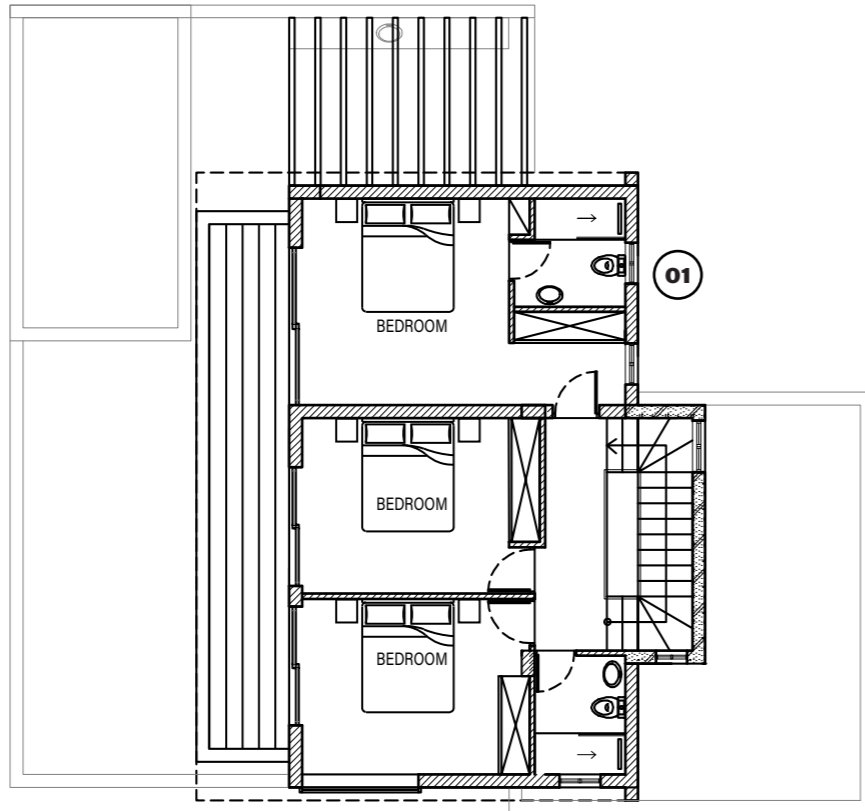
3 bedroom Villa

01 LAUNDRY

GROUND FLOOR



# PLANS



01 EN-SUITE

1ST FLOOR PLAN

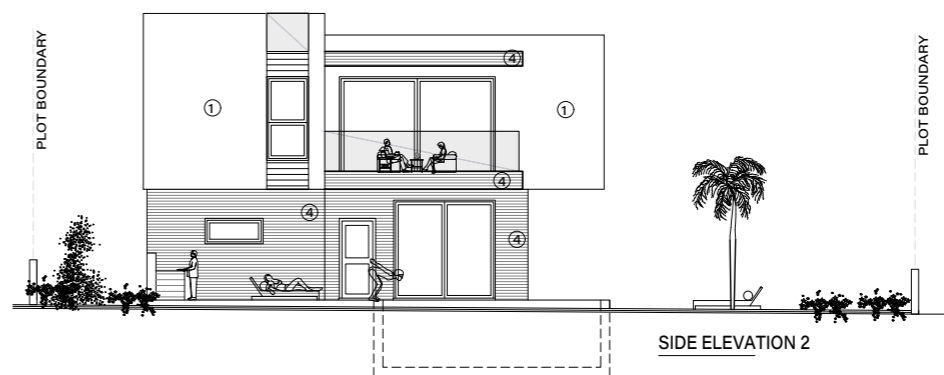
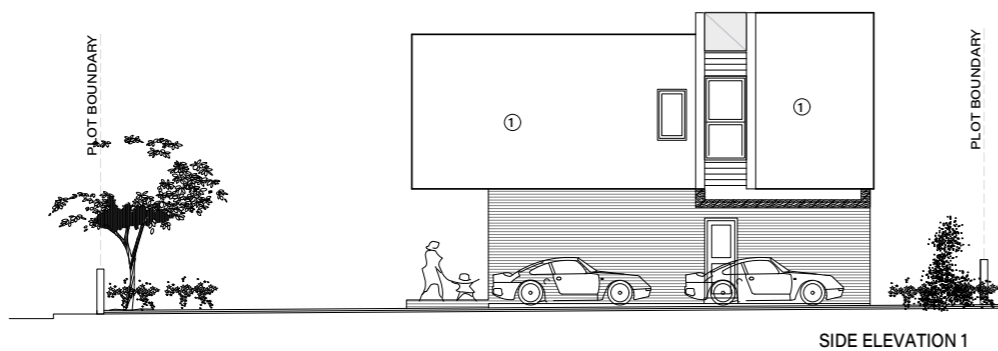
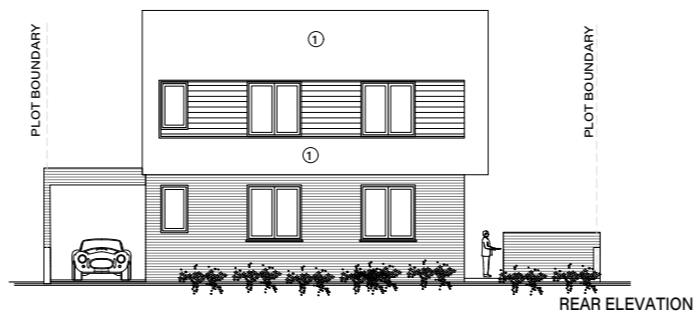


ROOF PLAN

# VILLA TYPE C

OVERVIEW

3 bedroom Villa



- O1** White render
- O2** Grey render
- O3** Fair-face concrete
- O4** Board formed concrete

- O5** Louvers 5x20 cm
- O6** Aluminium cladding
- O7** Aluminium windows
- O8** Glass balustrate

- O8A** Glass balustrate (with sandblasting)
- O9** Green wall
- O10** Deck
- O11** HPL
- O12** Timber cladding





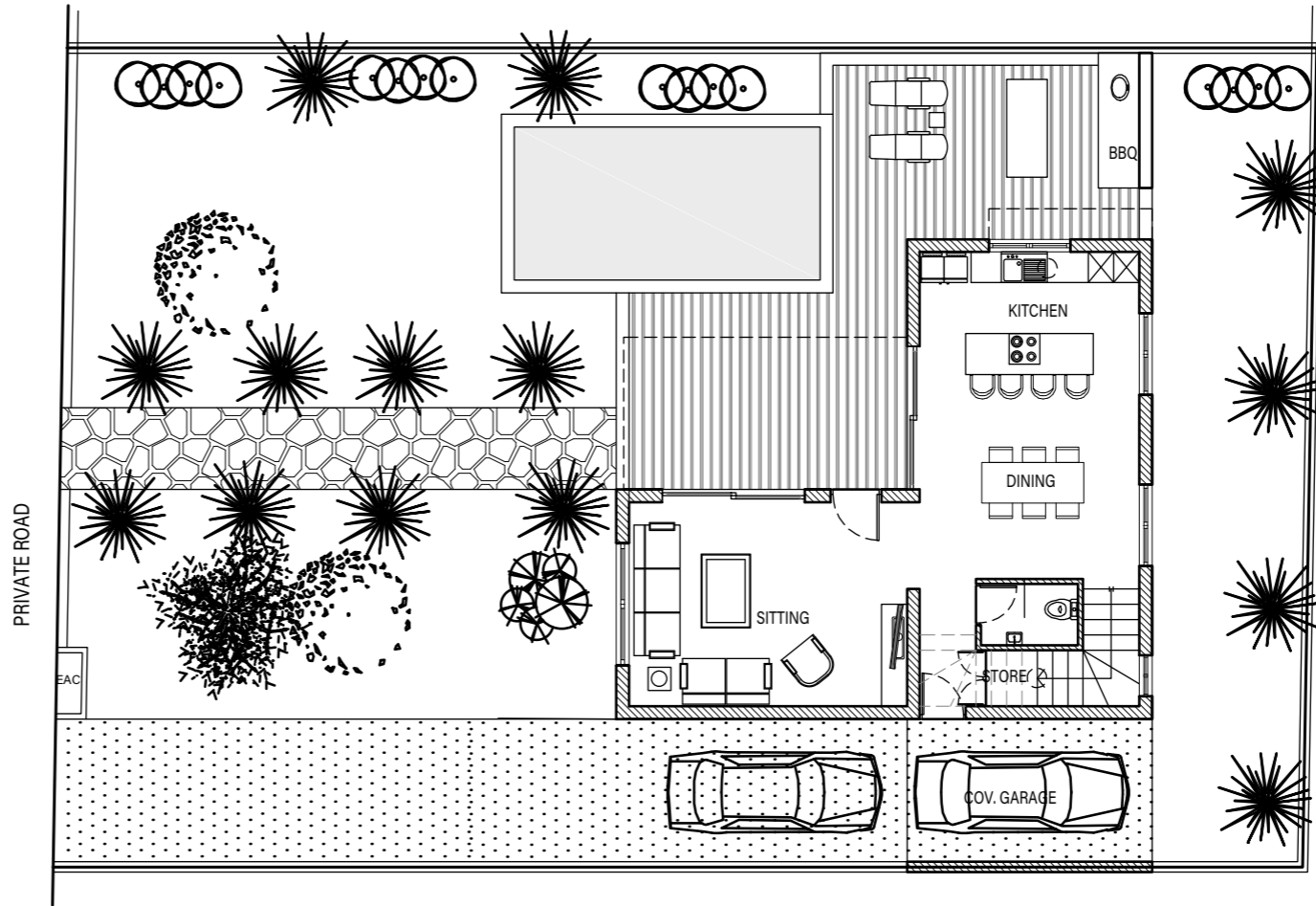


# VILLA TYPE C

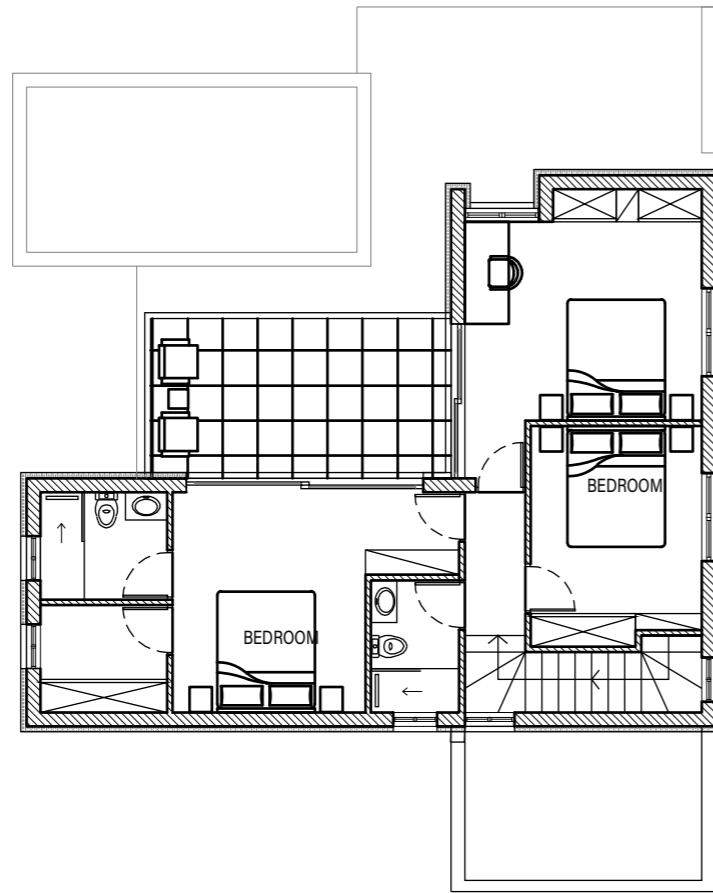
OVERVIEW

3 bedroom Villa

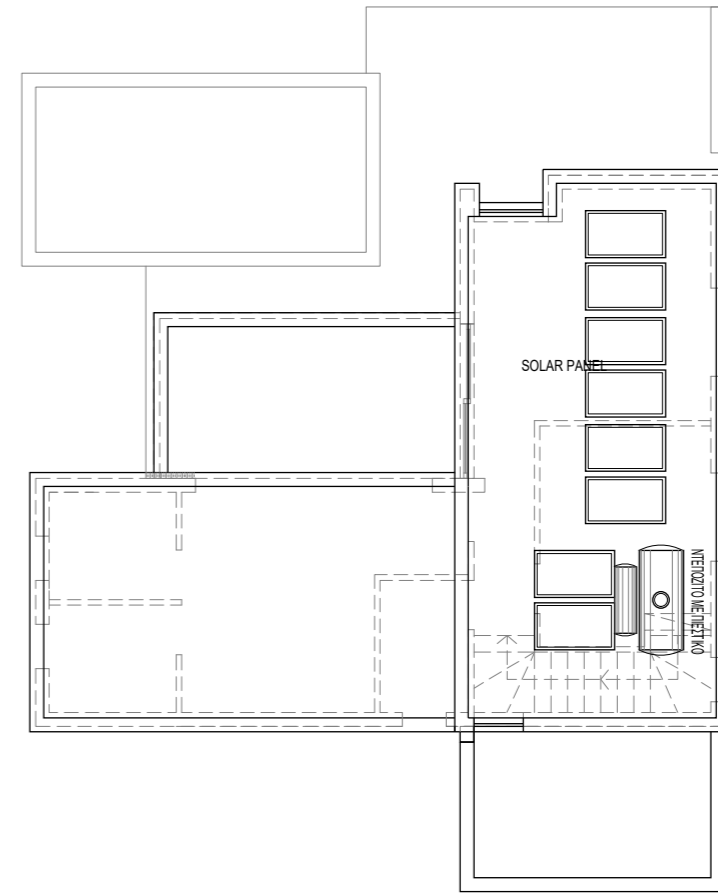
GROUND FLOOR



# PLANS



1ST FLOOR PLAN

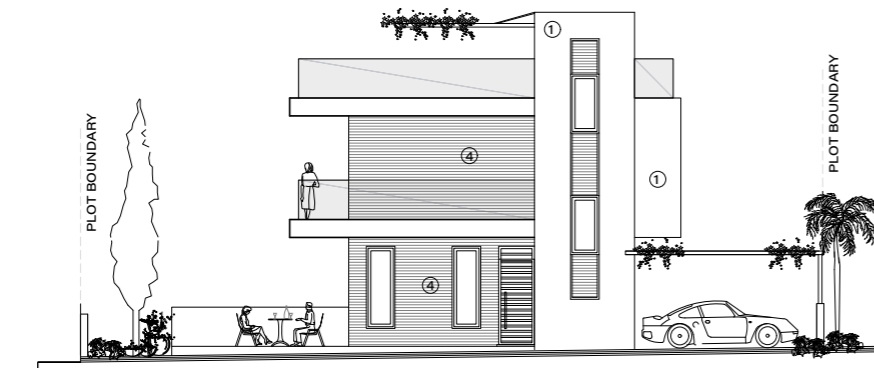


ROOF PLAN

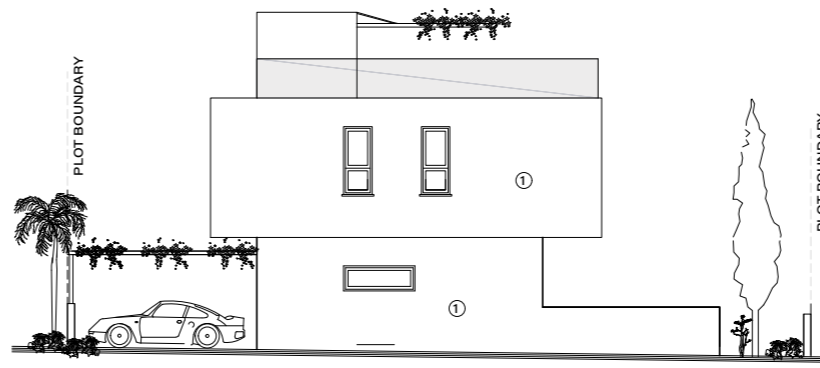
# VILLA TYPE D

OVERVIEW

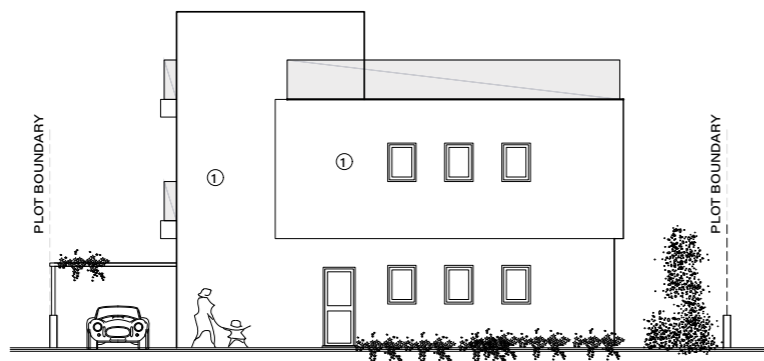
3 bedroom Villa



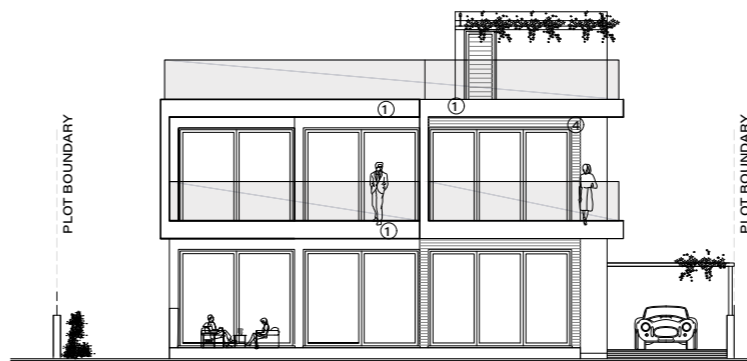
FRONT ELEVATION



SIDE ELEVATION 1



REAR ELEVATION



SIDE ELEVATION 2

- |           |                       |           |                    |            |                                      |
|-----------|-----------------------|-----------|--------------------|------------|--------------------------------------|
| <b>01</b> | White render          | <b>05</b> | Louvers 5x20 cm    | <b>08A</b> | Glass balustrate (with sandblasting) |
| <b>02</b> | Grey render           | <b>06</b> | Aluminium cladding | <b>09</b>  | Green wall                           |
| <b>03</b> | Fair-face concrete    | <b>07</b> | Aluminium windows  | <b>10</b>  | Deck                                 |
| <b>04</b> | Board formed concrete | <b>08</b> | Glass balustrate   | <b>11</b>  | HPL                                  |
|           |                       |           |                    | <b>12</b>  | Timber cladding                      |





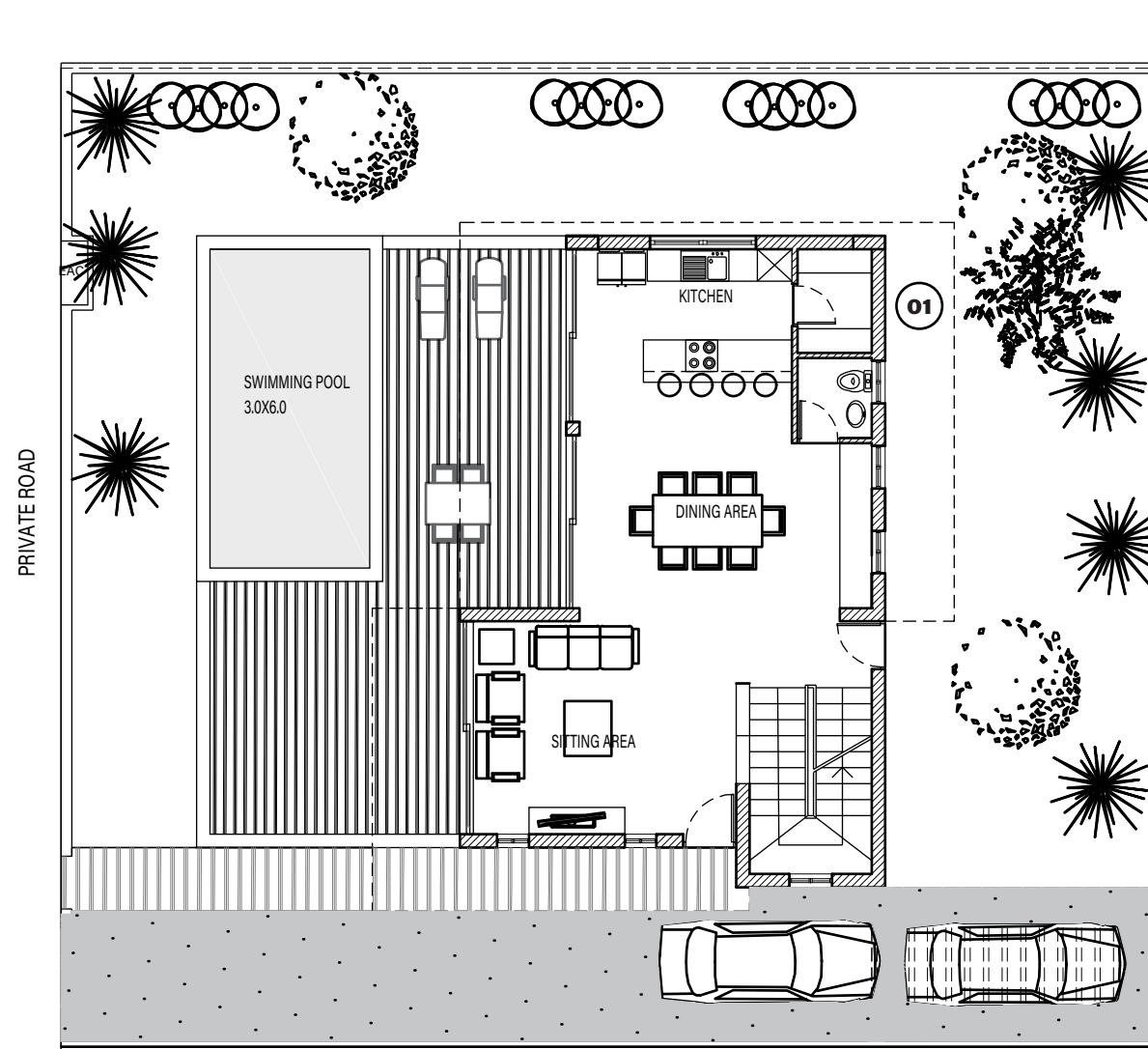
# VILLA TYPE D

OVERVIEW

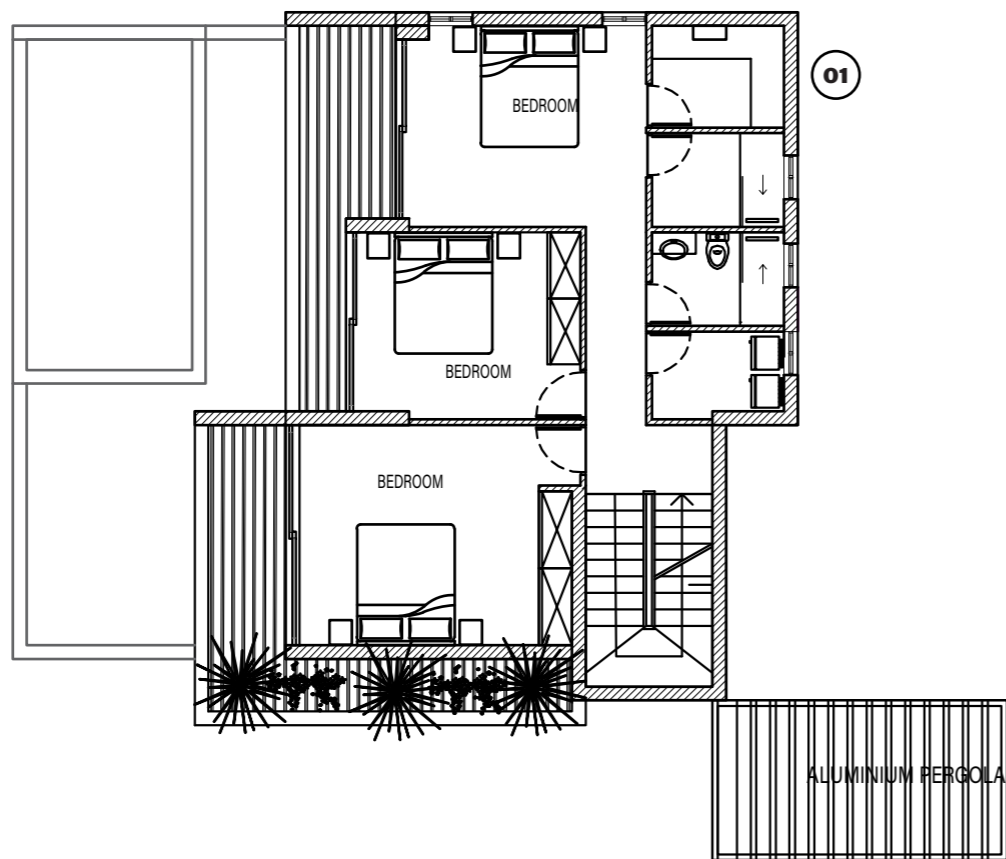
3 bedroom Villa

01 LAUNDRY

GROUND FLOOR

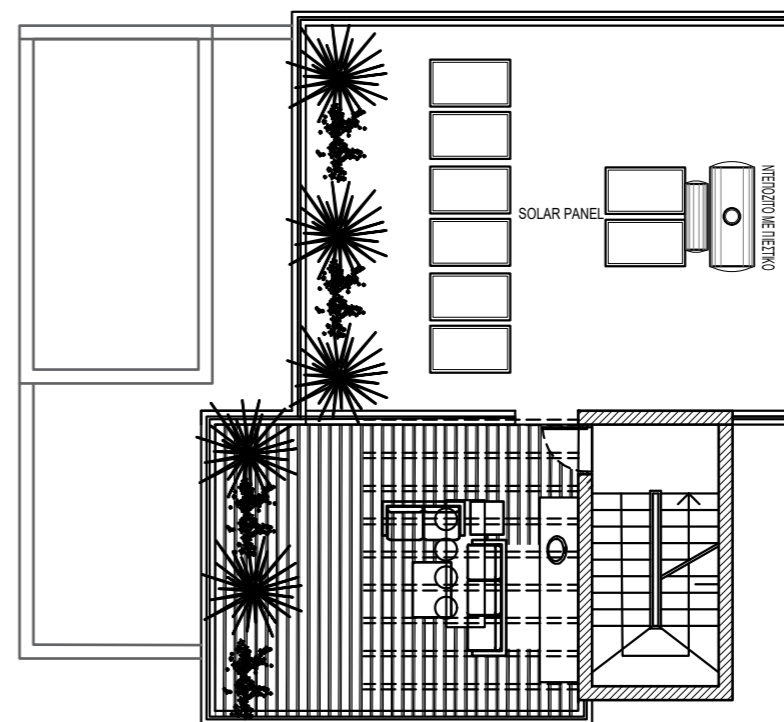


# PLANS



01 WALK-IN CLOSET

1ST FLOOR PLAN

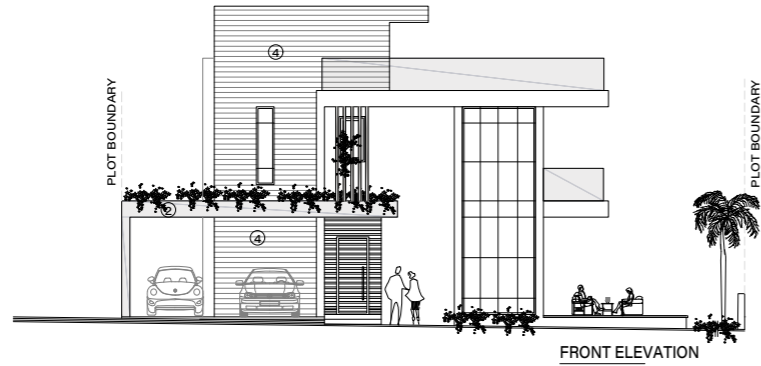


ROOF PLAN

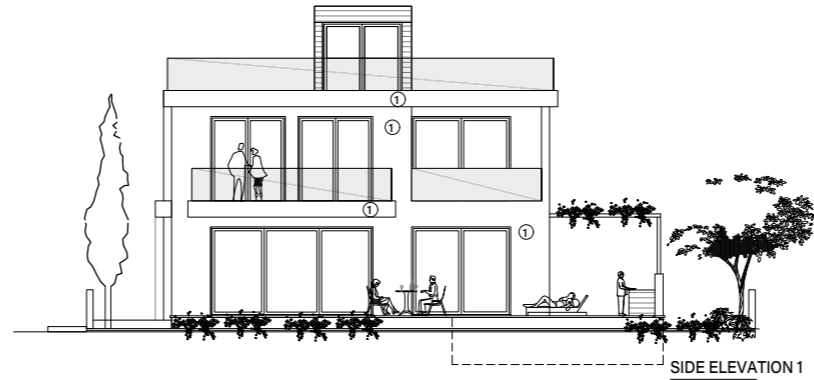
# VILLA TYPE E

OVERVIEW

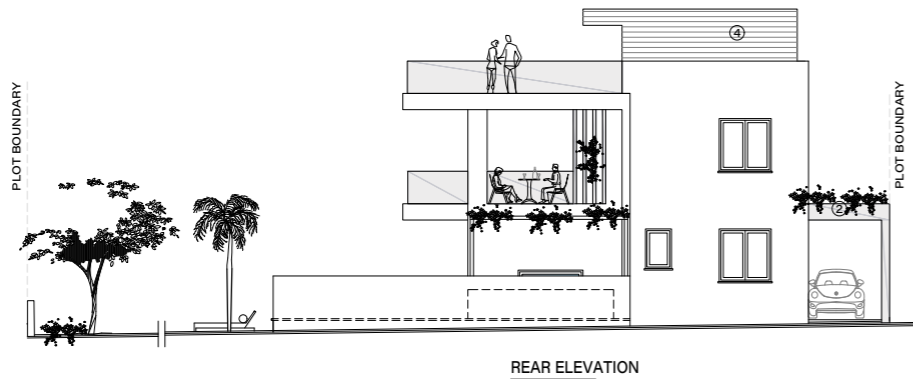
4 bedroom Villa



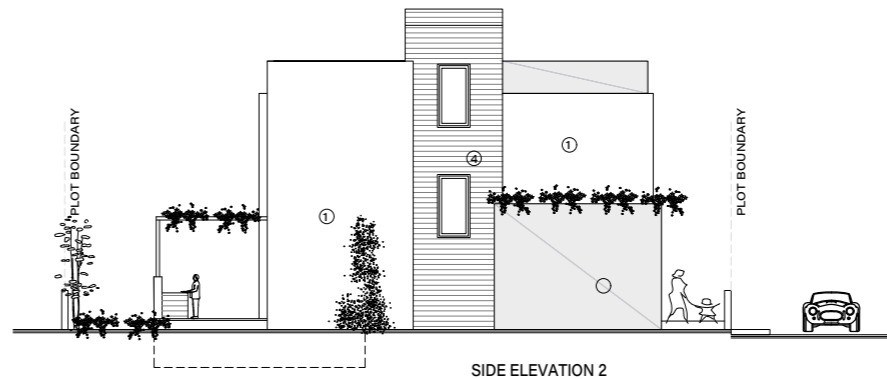
FRONT ELEVATION



SIDE ELEVATION 1



REAR ELEVATION

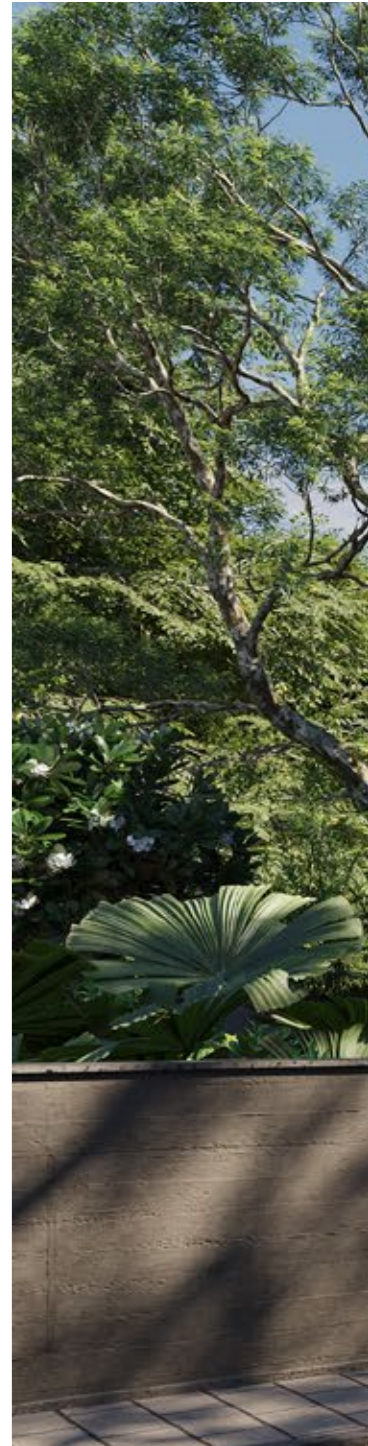


SIDE ELEVATION 2

- 01 White render
- 02 Grey render
- 03 Fair-face concrete
- 04 Board formed concrete

- 05 Louvers 5x20 cm
- 06 Aluminium cladding
- 07 Aluminium windows
- 08 Glass balustrate

- 08A Glass balustrate (with sandblasting)
- 09 Green wall
- 10 Deck
- 11 HPL
- 12 Timber cladding





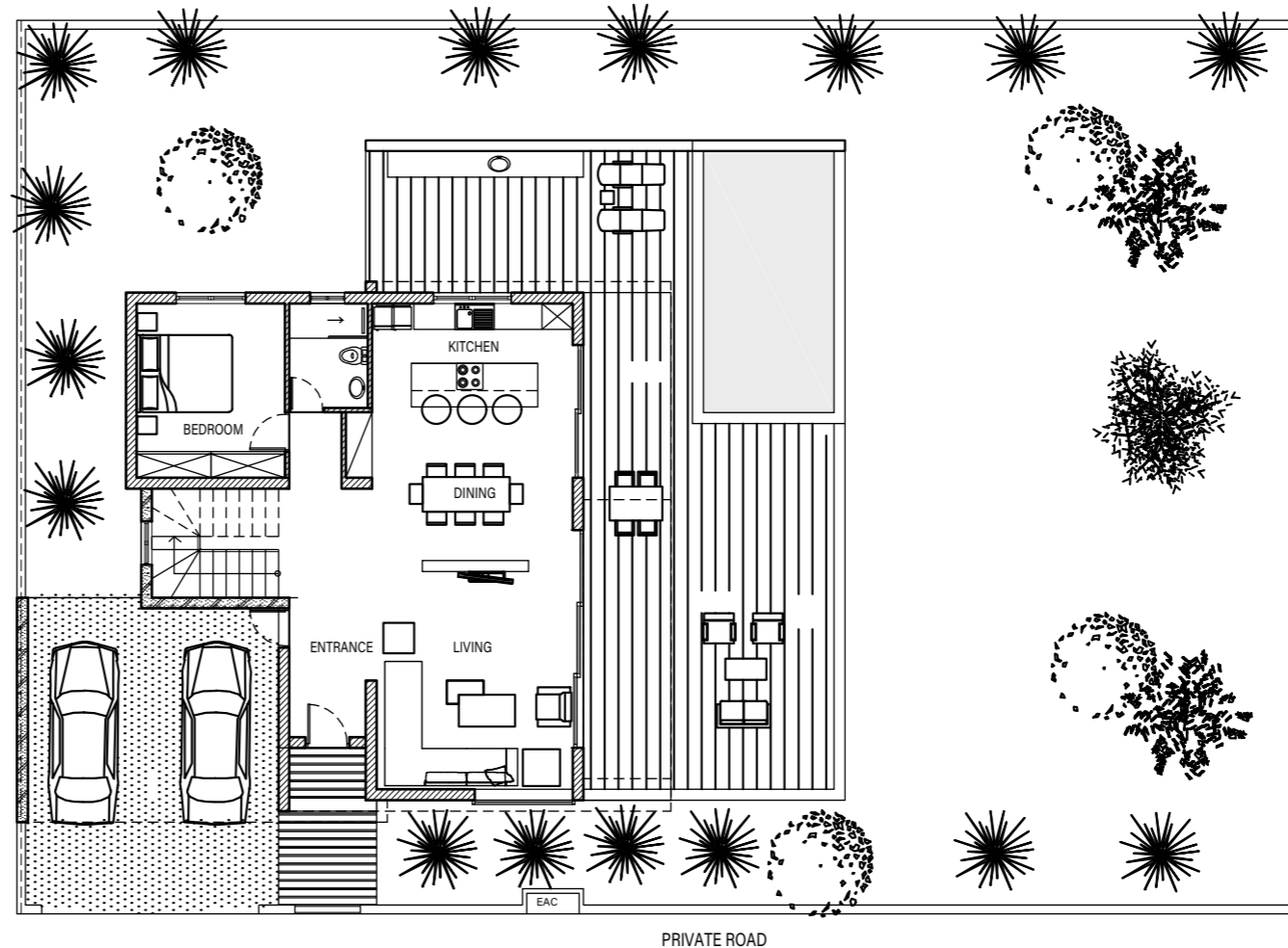


# VILLA TYPE E

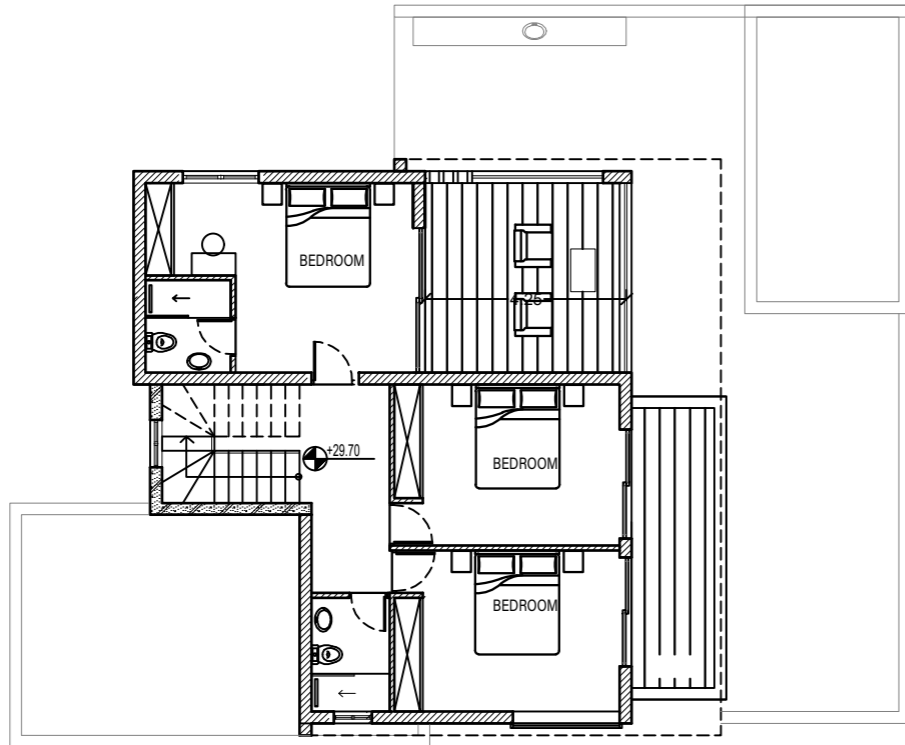
OVERVIEW

4 bedroom Villa

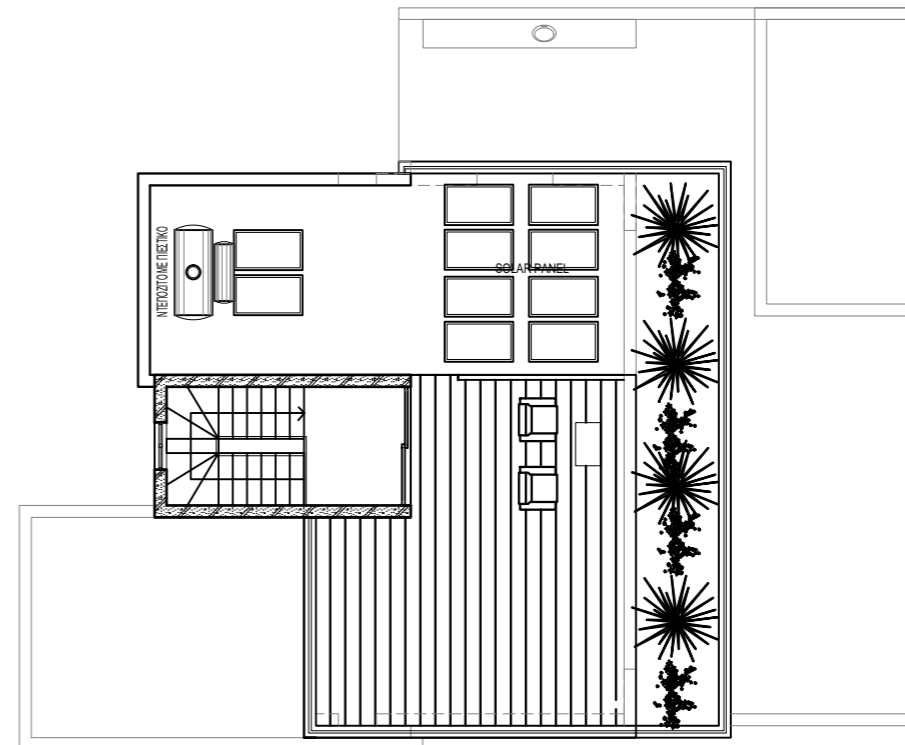
GROUND FLOOR



# PLANS



1ST FLOOR PLAN

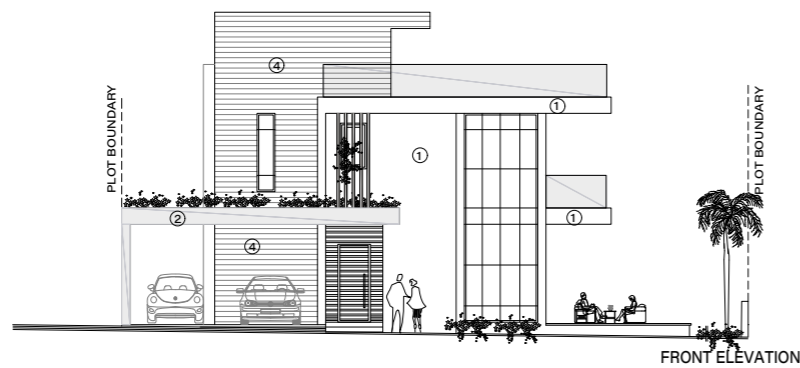


ROOF PLAN

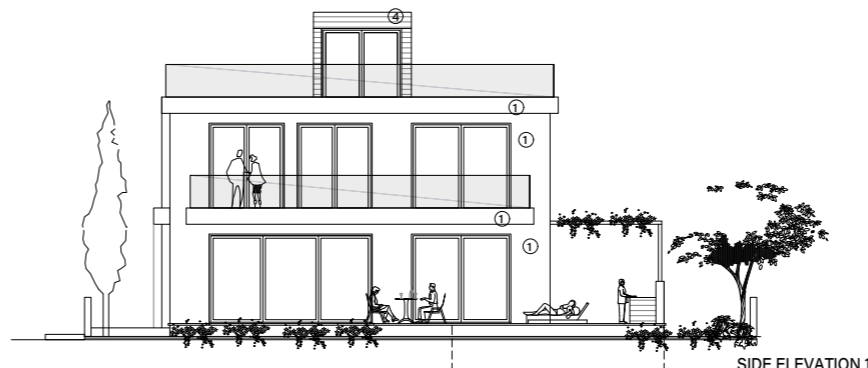
# VILLA TYPE F2

OVERVIEW

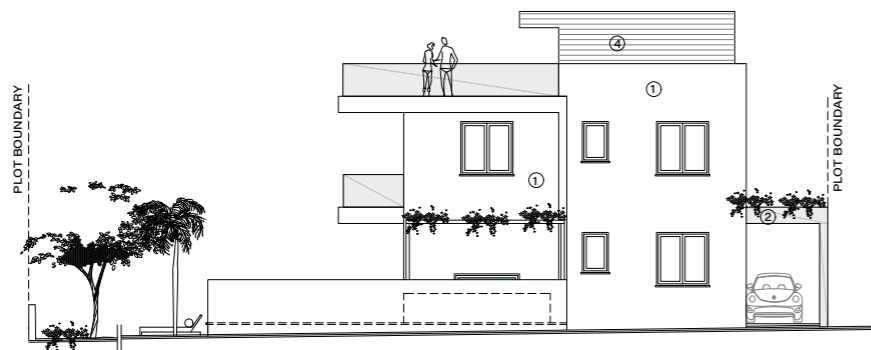
5 bedroom Villa



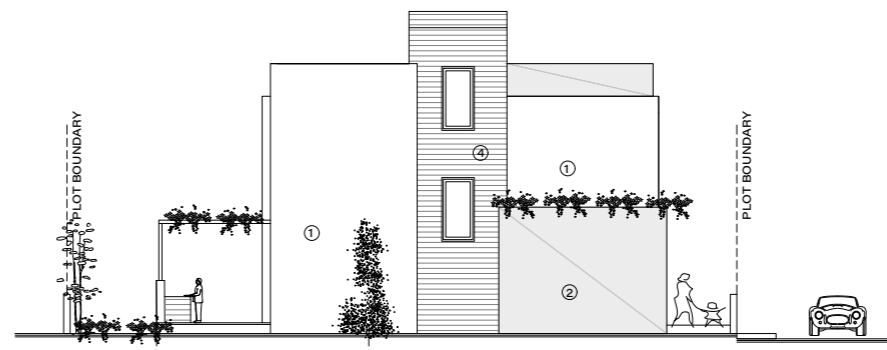
FRONT ELEVATION



SIDE ELEVATION 1

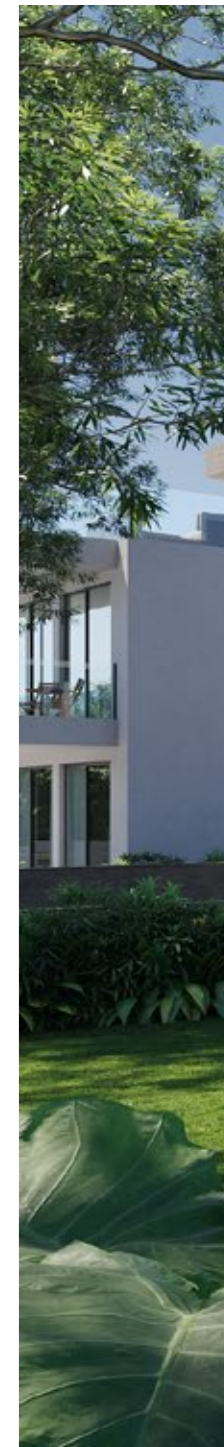


REAR ELEVATION



SIDE ELEVATION 2

<b>01</b>	White render	<b>05</b>	Louvers 5x20 cm	<b>08A</b>	Glass balustrate (with sandblasting)
<b>02</b>	Grey render	<b>06</b>	Aluminium cladding	<b>09</b>	Green wall
<b>03</b>	Fair-face concrete	<b>07</b>	Aluminium windows	<b>10</b>	Deck
<b>04</b>	Board formed concrete	<b>08</b>	Glass balustrate	<b>11</b>	HPL
				<b>12</b>	Timber cladding



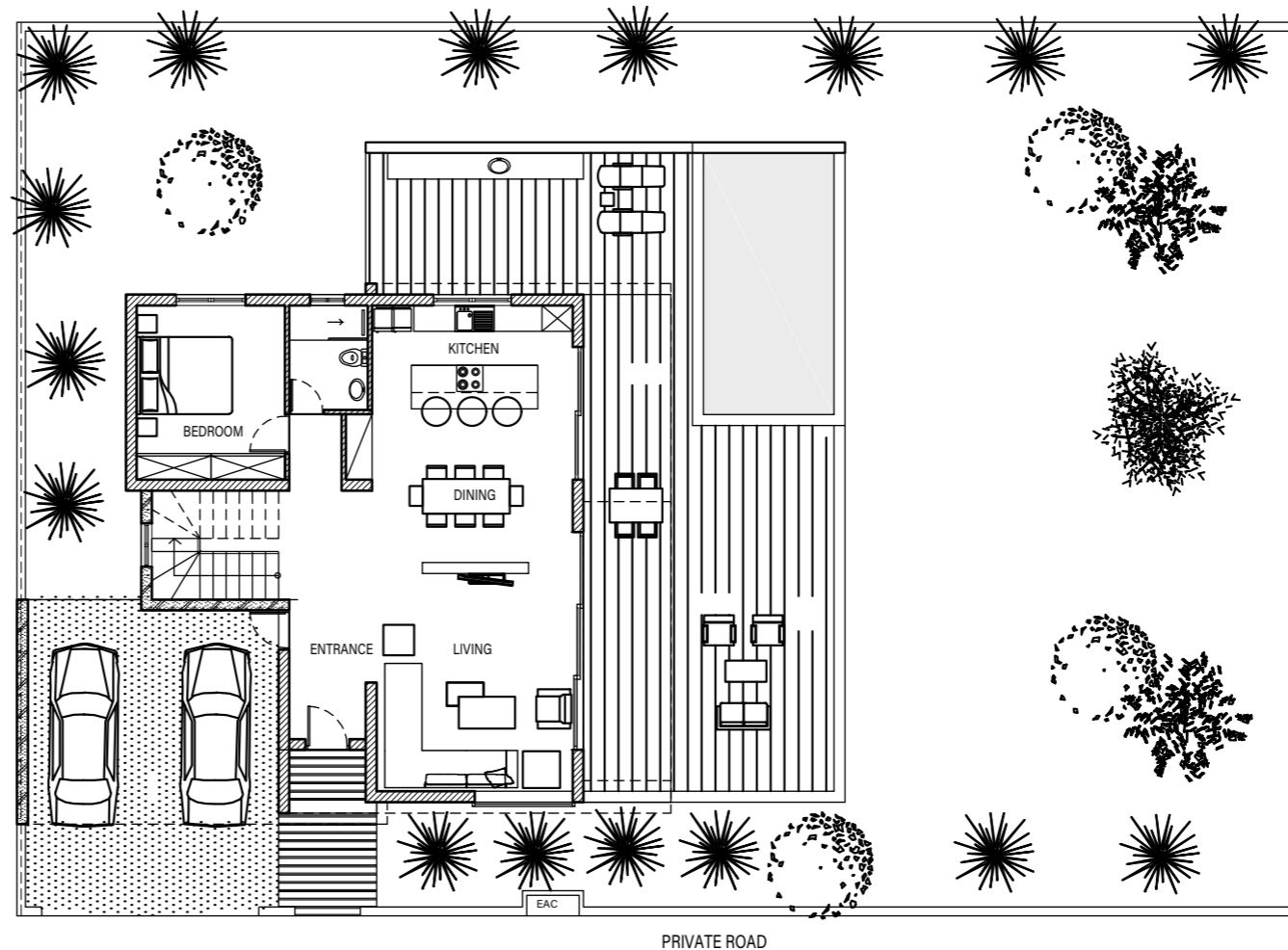


# VILLA TYPE F2

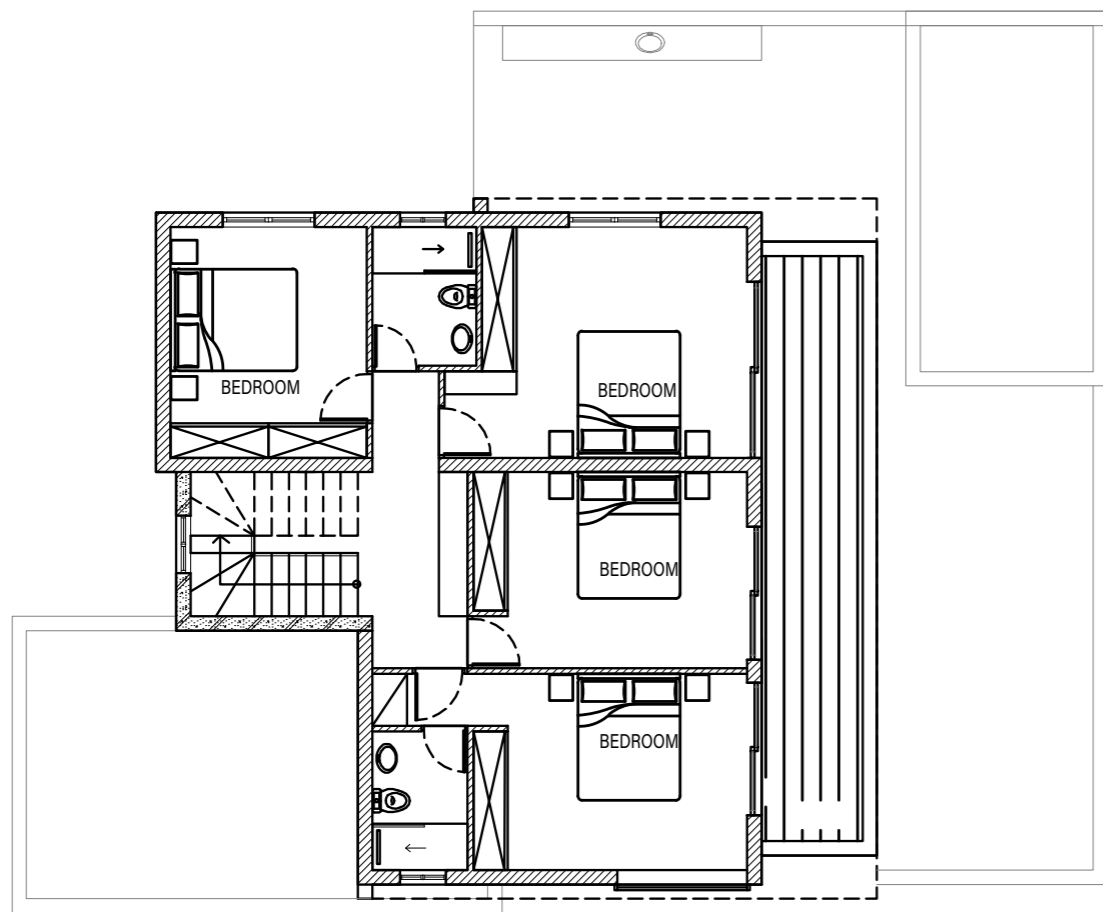
OVERVIEW

5 bedroom Villa

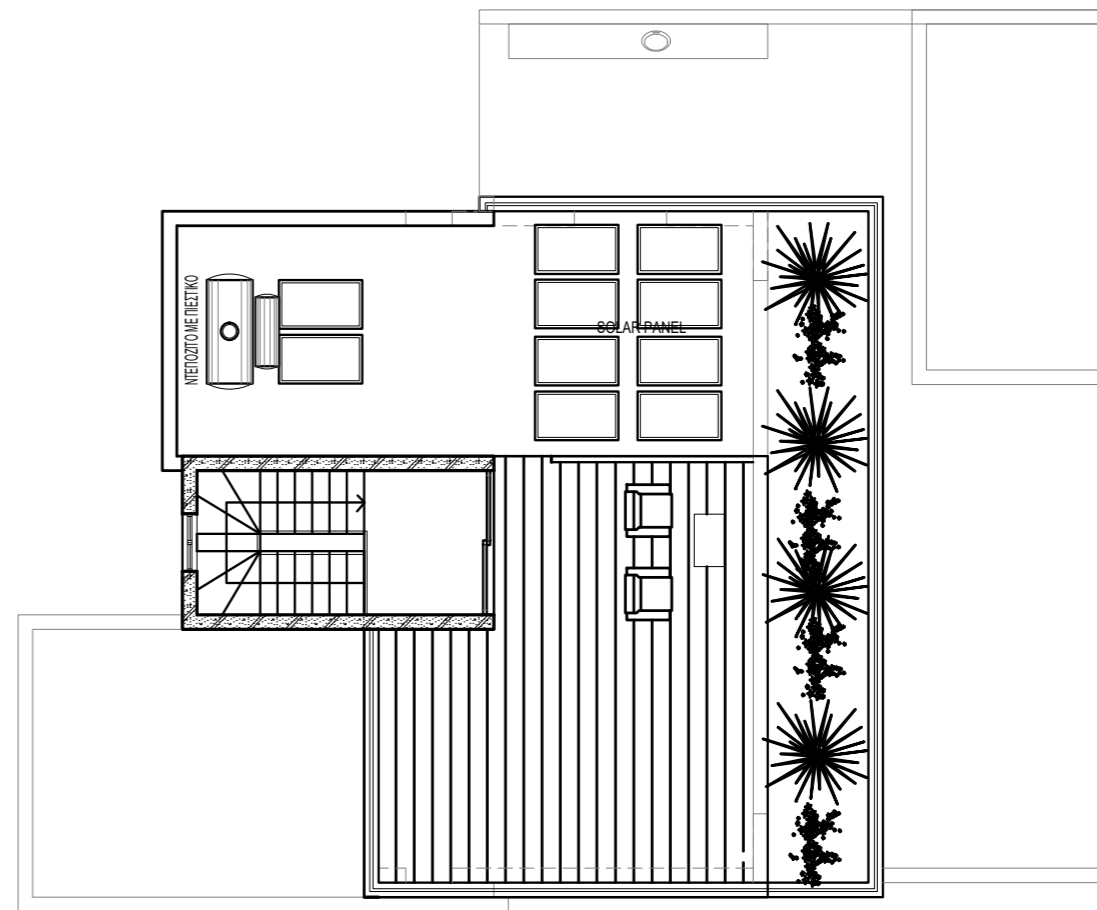
GROUND FLOOR



# PLANS



1ST FLOOR PLAN

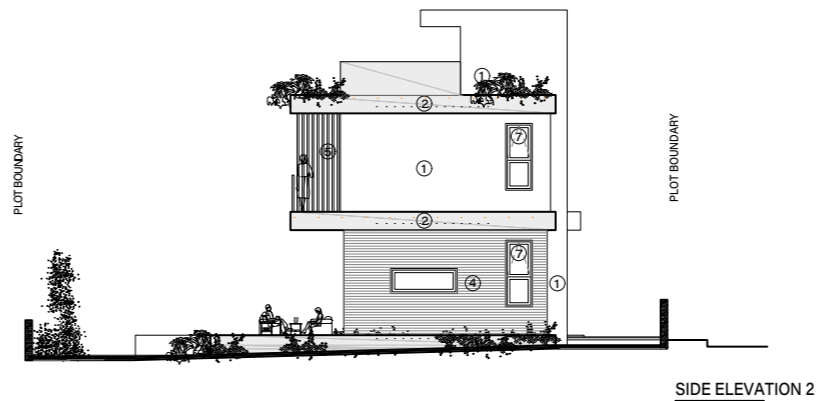
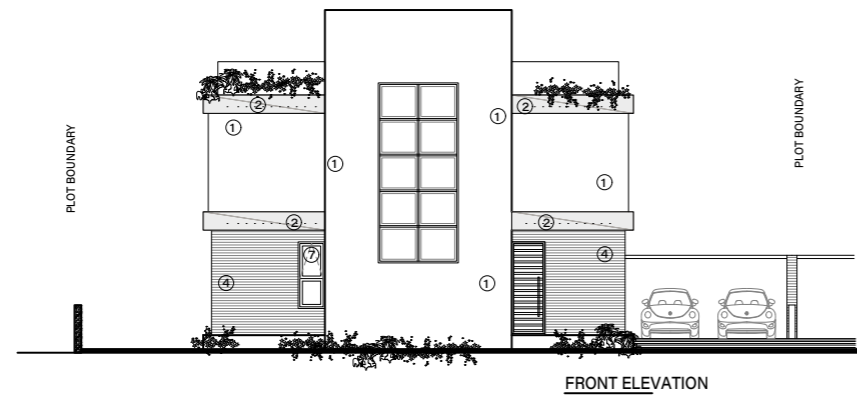
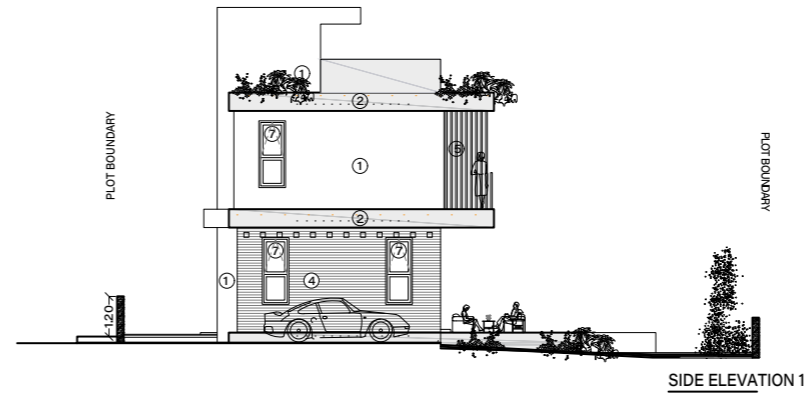
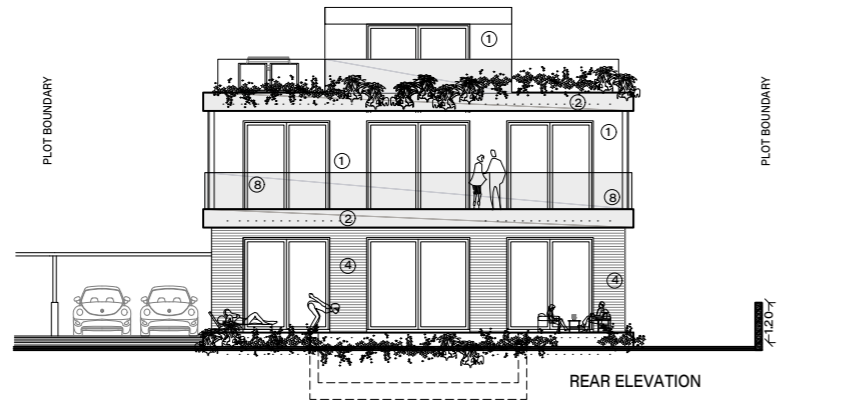


ROOF PLAN

# VILLA TYPE G1

OVERVIEW

3 bedroom Villa



- |           |                       |           |                    |            |                                      |
|-----------|-----------------------|-----------|--------------------|------------|--------------------------------------|
| <b>O1</b> | White render          | <b>O5</b> | Louvers 5x20 cm    | <b>O8A</b> | Glass balustrade (with sandblasting) |
| <b>O2</b> | Grey render           | <b>O6</b> | Aluminium cladding | <b>O9</b>  | Green wall                           |
| <b>O3</b> | Fair-face concrete    | <b>O7</b> | Aluminium windows  | <b>O10</b> | Deck                                 |
| <b>O4</b> | Board formed concrete | <b>O8</b> | Glass balustrade   | <b>O11</b> | HPL                                  |
|           |                       |           |                    | <b>O12</b> | Timber cladding                      |





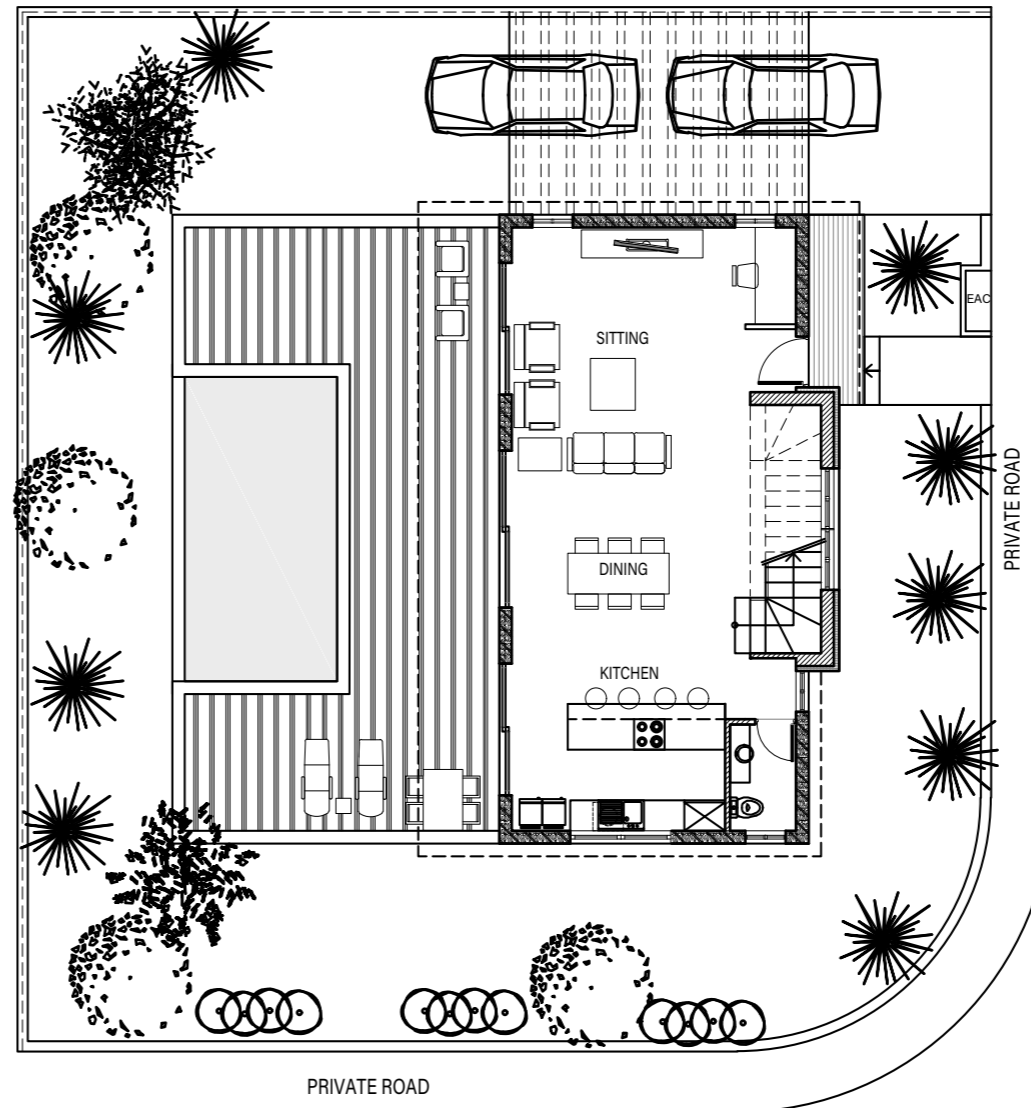


# VILLA TYPE G1

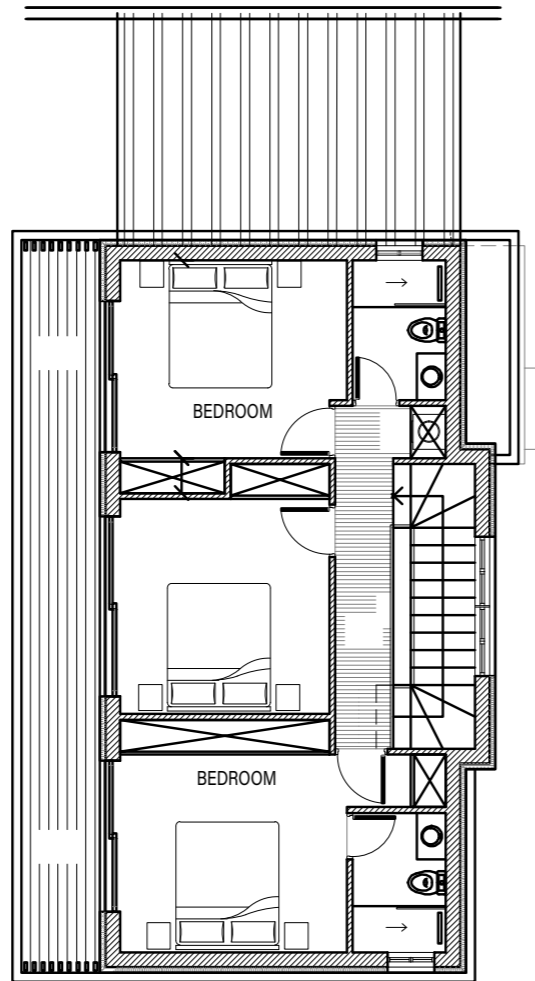
OVERVIEW

3 bedroom Villa

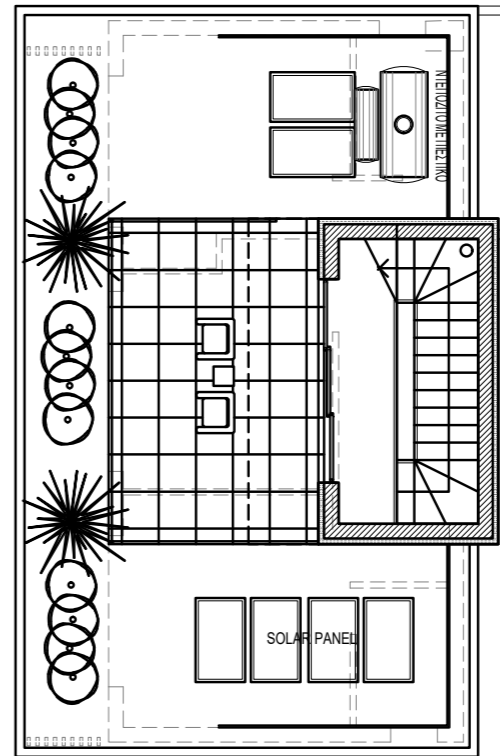
GROUND FLOOR



# PLANS



1ST FLOOR PLAN

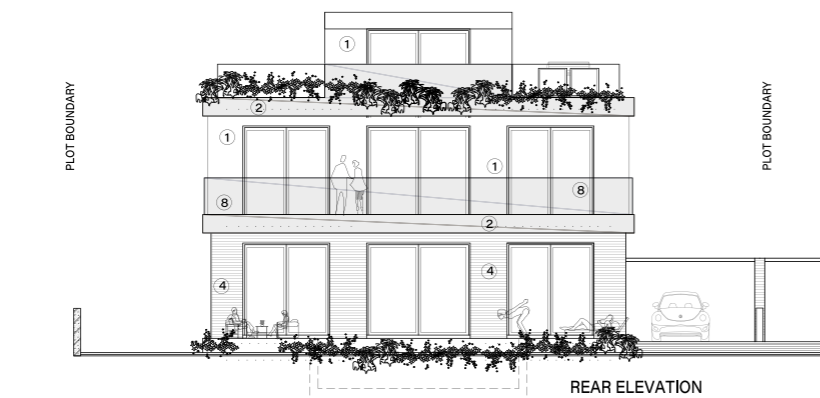


ROOF PLAN

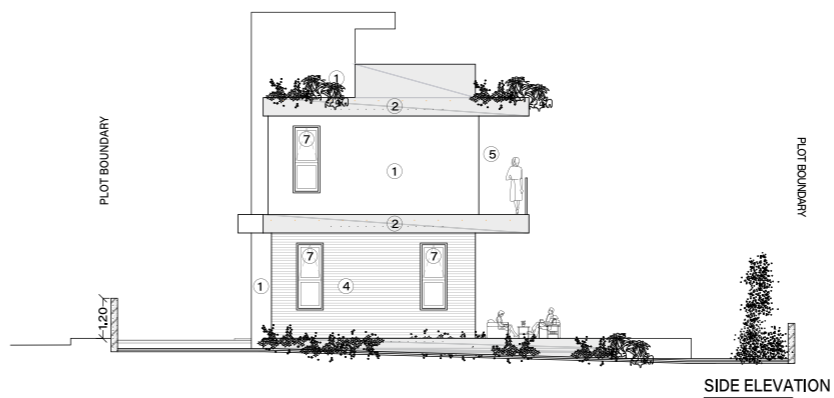
# VILLA TYPE G2

OVERVIEW

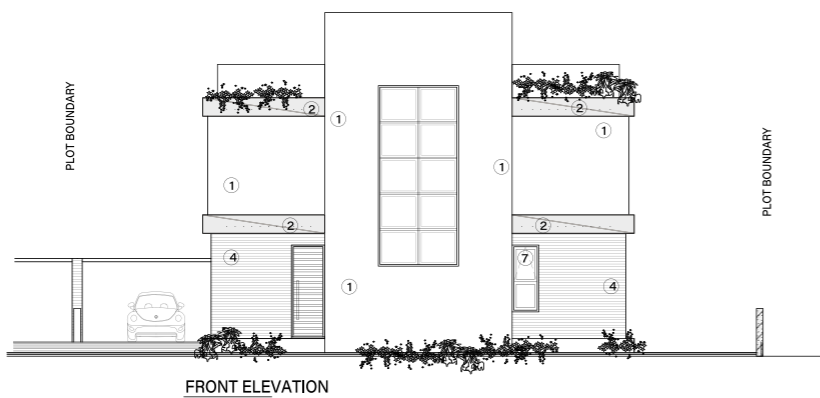
3 bedroom Villa



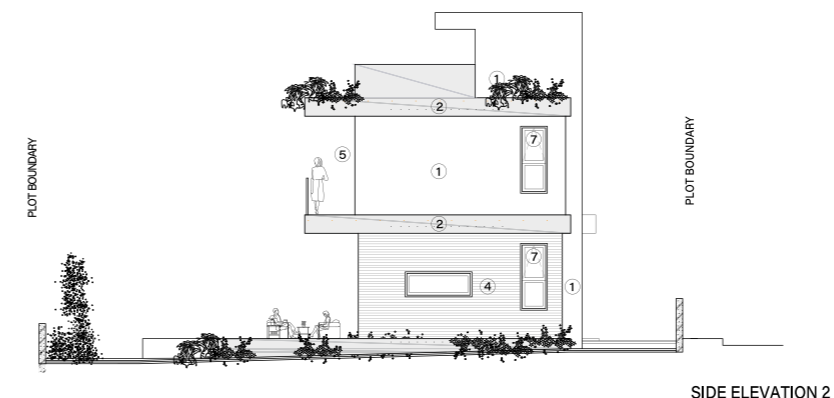
REAR ELEVATION



SIDE ELEVATION 1



FRONT ELEVATION



SIDE ELEVATION 2

- |           |                       |           |                    |            |                                      |
|-----------|-----------------------|-----------|--------------------|------------|--------------------------------------|
| <b>01</b> | White render          | <b>05</b> | Louvers 5x20 cm    | <b>08A</b> | Glass balustrate (with sandblasting) |
| <b>02</b> | Grey render           | <b>06</b> | Aluminium cladding | <b>09</b>  | Green wall                           |
| <b>03</b> | Fair-face concrete    | <b>07</b> | Aluminium windows  | <b>10</b>  | Deck                                 |
| <b>04</b> | Board formed concrete | <b>08</b> | Glass balustrate   | <b>11</b>  | HPL                                  |
|           |                       |           |                    | <b>12</b>  | Timber cladding                      |



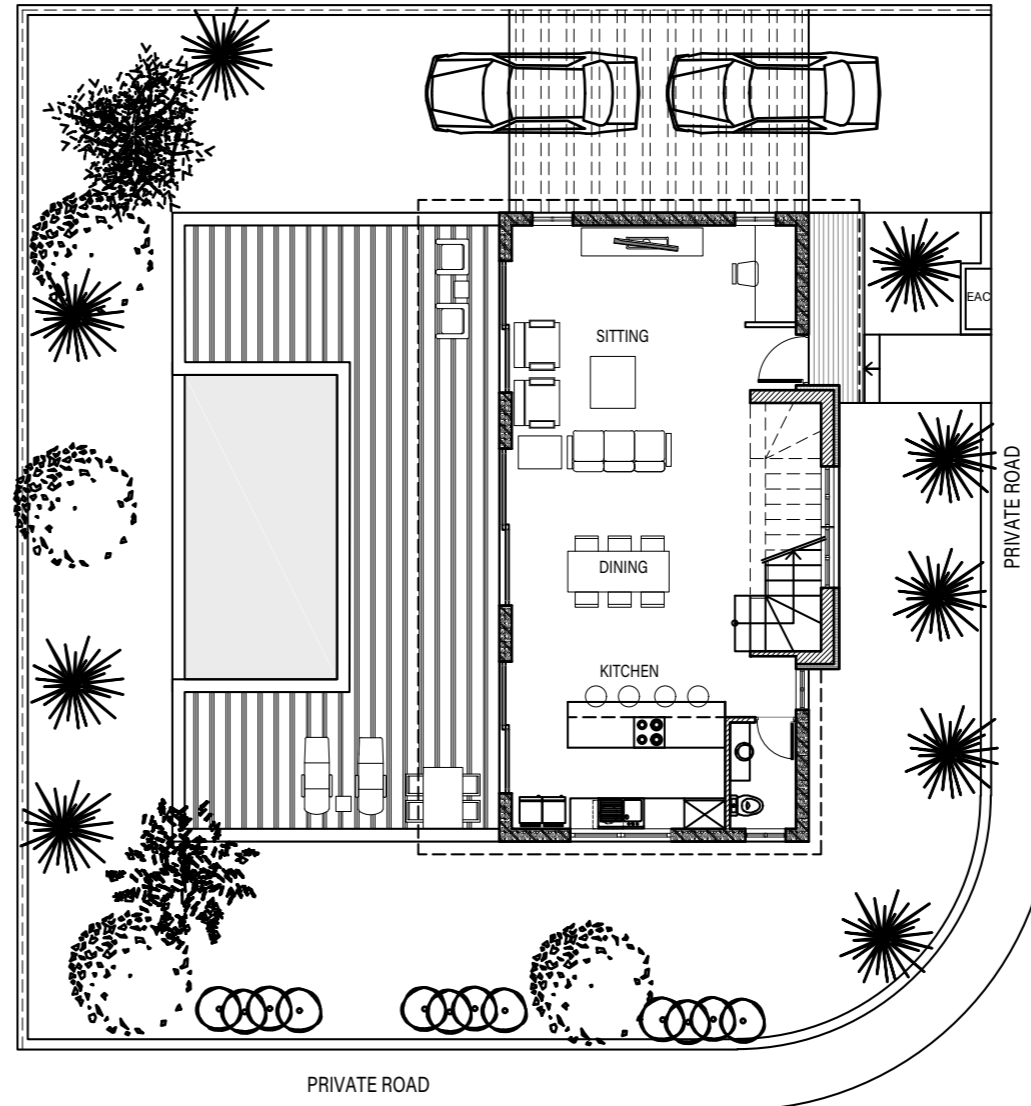


# VILLA TYPE G2

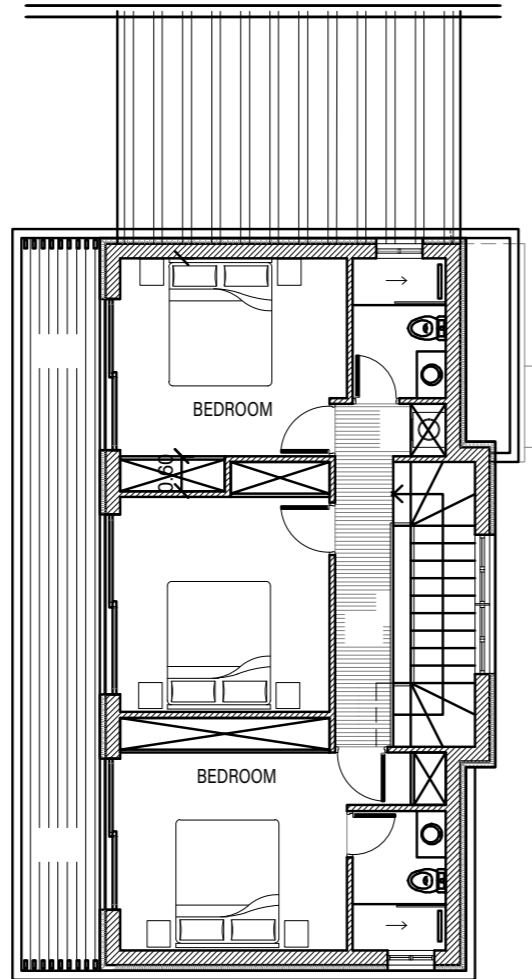
OVERVIEW

3 bedroom Villa

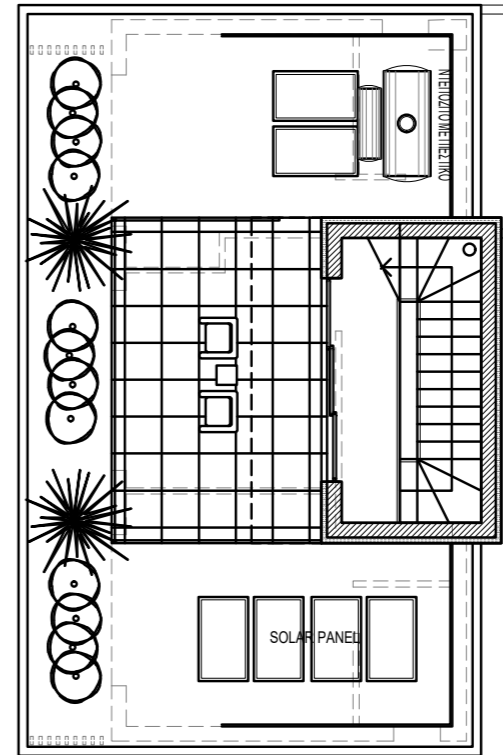
GROUND FLOOR



# PLANS



1ST FLOOR PLAN

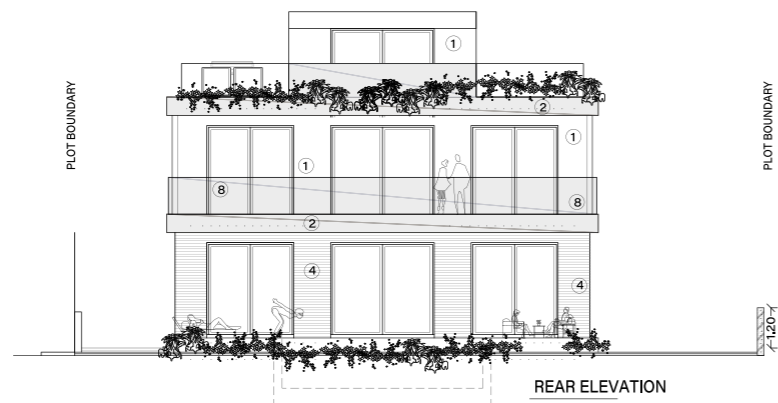


ROOF PLAN

# VILLA TYPE H1

OVERVIEW

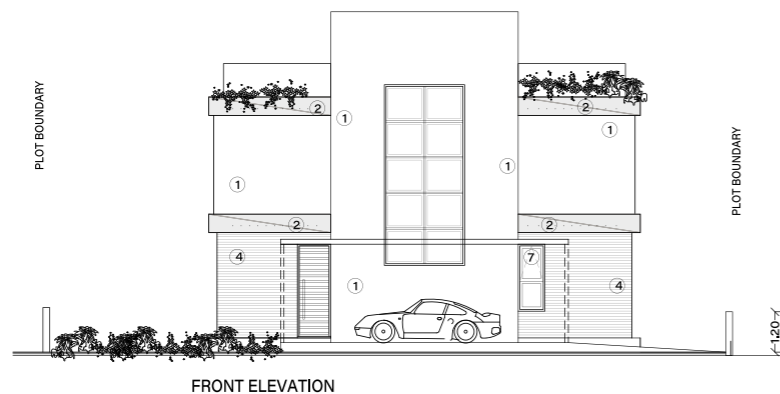
3 bedroom Villa



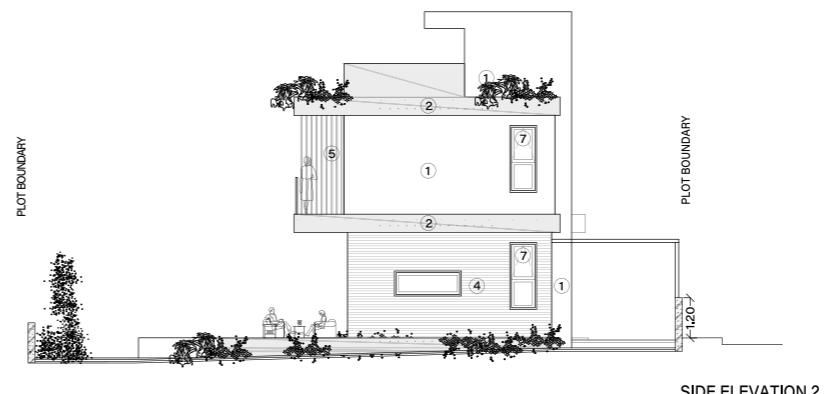
REAR ELEVATION



SIDE ELEVATION 1



FRONT ELEVATION



SIDE ELEVATION 2

<b>01</b>	White render	<b>05</b>	Louvers 5x20 cm	<b>08A</b>	Glass balustrate (with sandblasting)
<b>02</b>	Grey render	<b>06</b>	Aluminium cladding	<b>09</b>	Green wall
<b>03</b>	Fair-face concrete	<b>07</b>	Aluminium windows	<b>10</b>	Deck
<b>04</b>	Board formed concrete	<b>08</b>	Glass balustrate	<b>11</b>	HPL
				<b>12</b>	Timber cladding





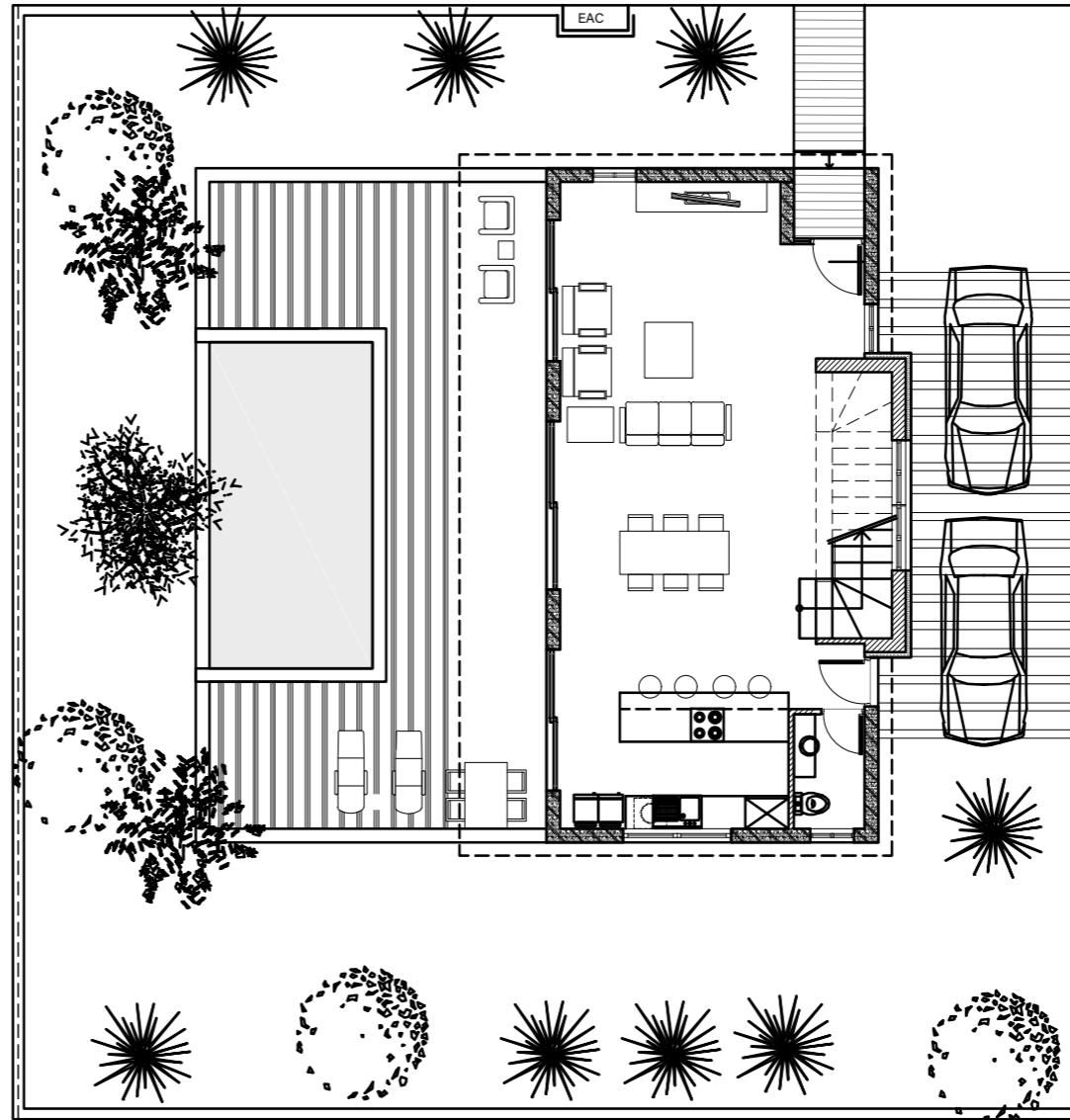


# VILLA TYPE H1

OVERVIEW

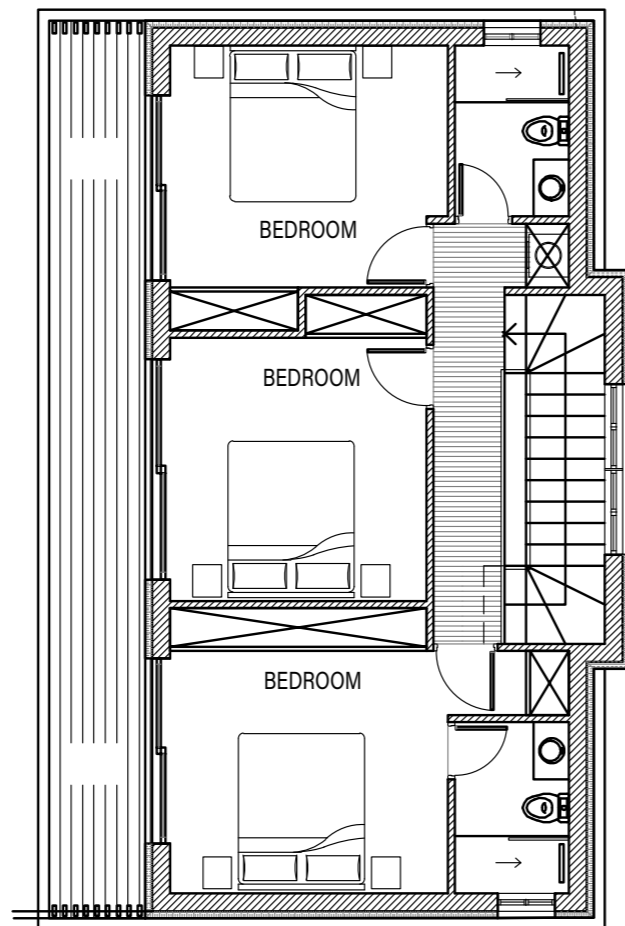
3 bedroom Villa

PRIVATE ROAD

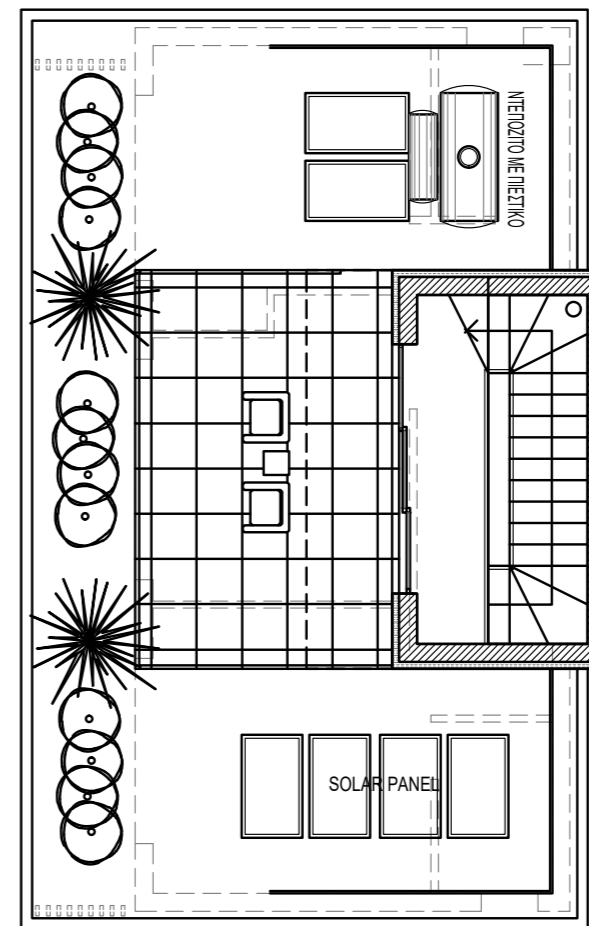


GROUND FLOOR

# PLANS



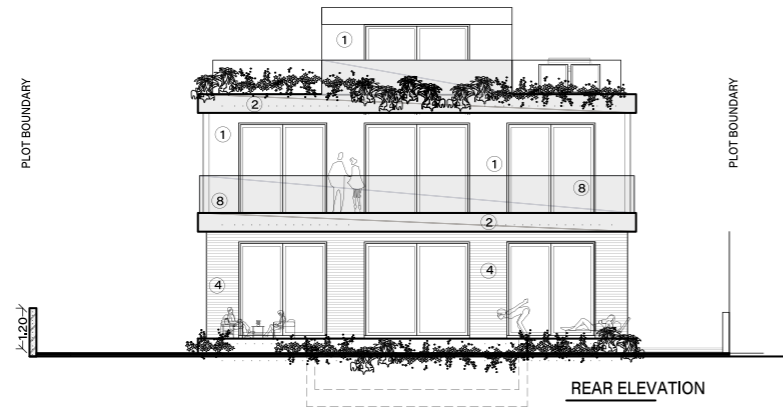
1ST FLOOR PLAN



ROOF PLAN

# VILLA TYPE H2

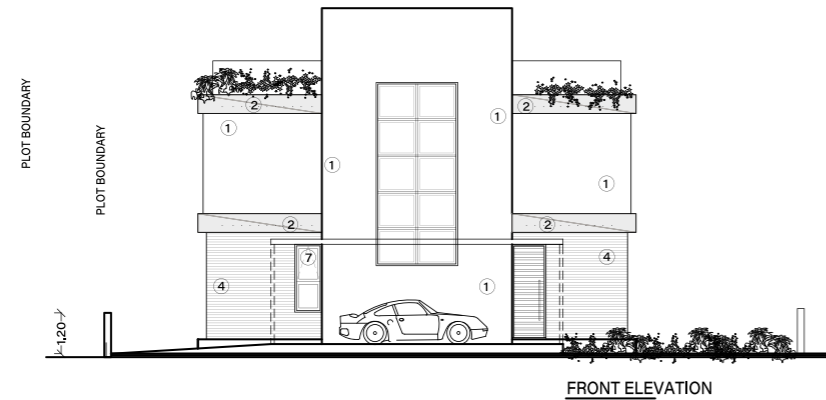
OVERVIEW



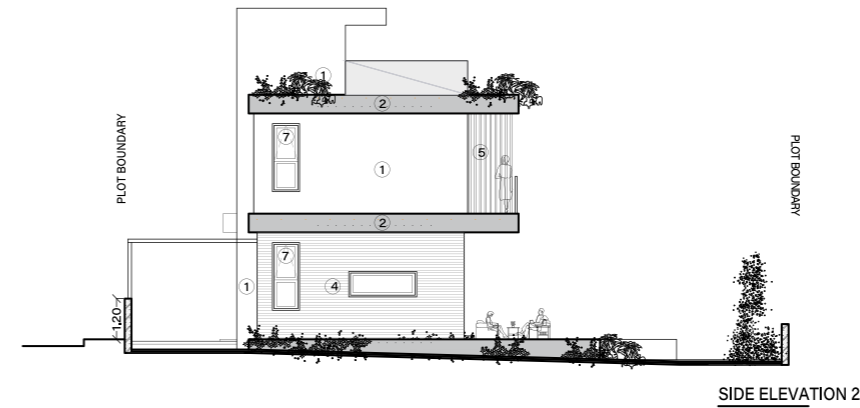
REAR ELEVATION



SIDE ELEVATION 1



FRONT ELEVATION



SIDE ELEVATION 2

- |           |                       |           |                    |            |                 |
|-----------|-----------------------|-----------|--------------------|------------|-----------------|
| <b>01</b> | White render          | <b>05</b> | Louvers 5x20 cm    | <b>08A</b> |                 |
| <b>02</b> | Grey render           | <b>06</b> | Aluminium cladding | <b>09</b>  | Green wall      |
| <b>03</b> | Fair-face concrete    | <b>07</b> | Aluminium windows  | <b>10</b>  | Deck            |
| <b>04</b> | Board formed concrete | <b>08</b> | Glass balustrade   | <b>11</b>  | HPL             |
|           |                       |           |                    | <b>12</b>  | Timber cladding |

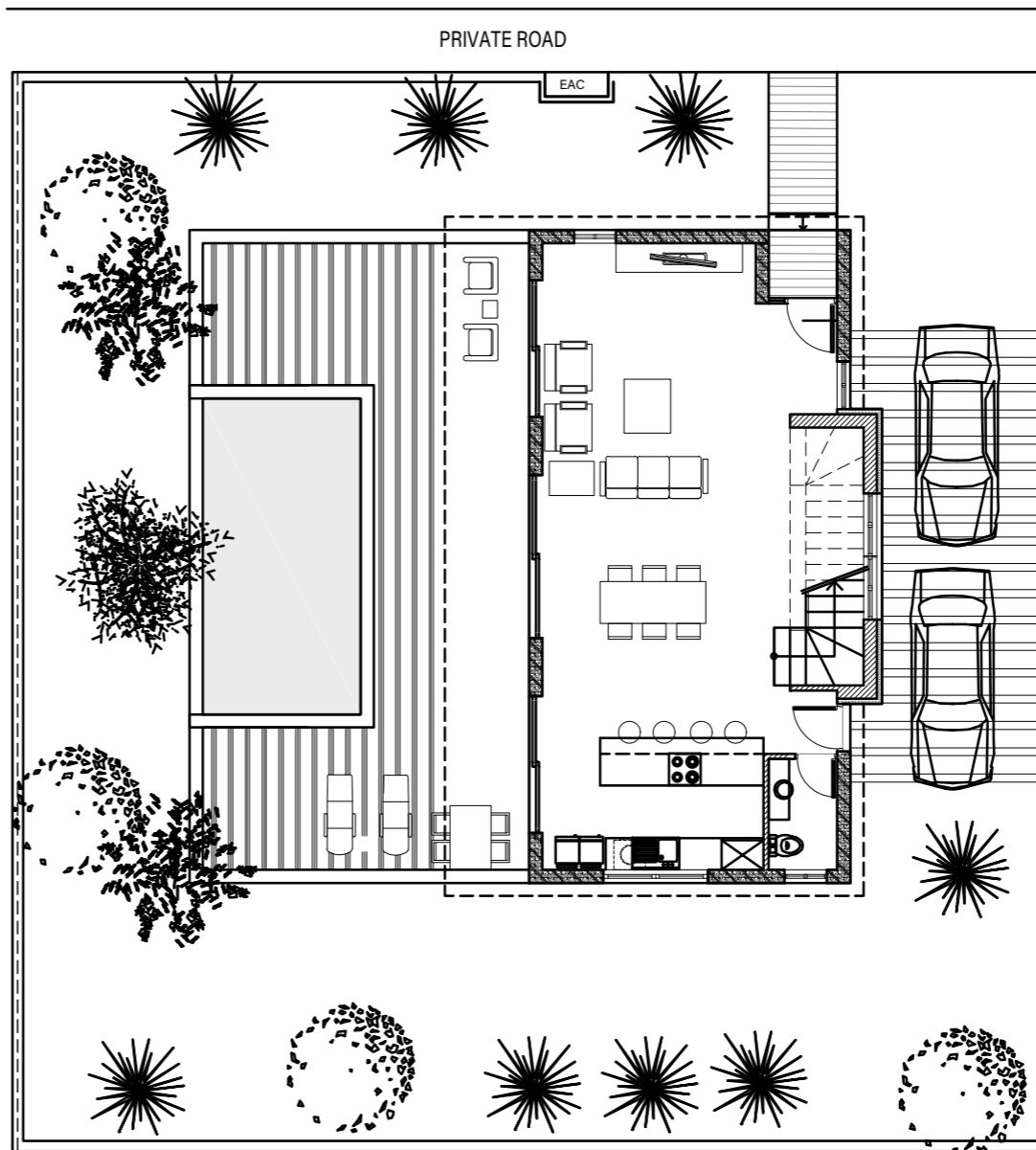




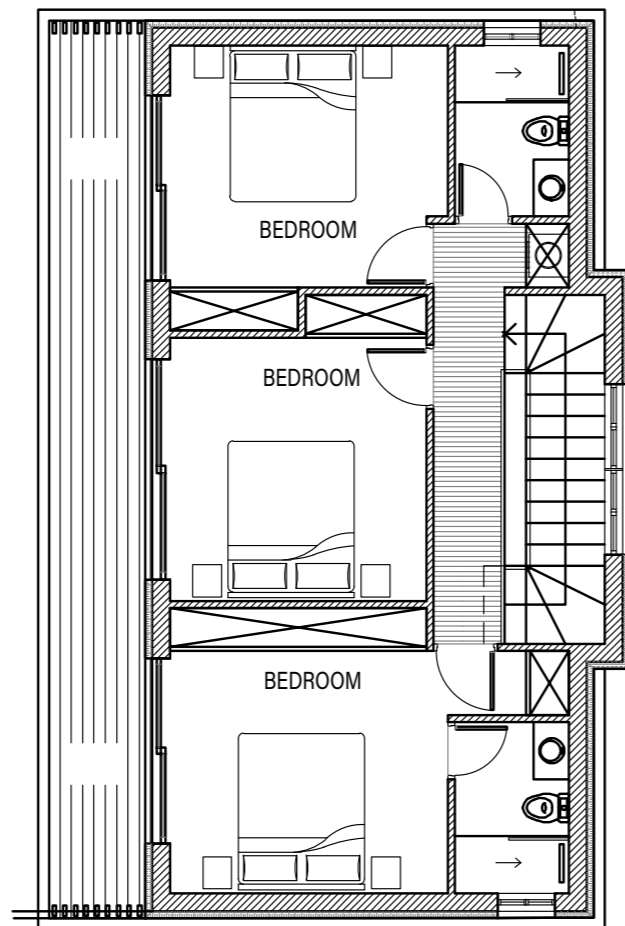
# VILLA TYPE H2

OVERVIEW

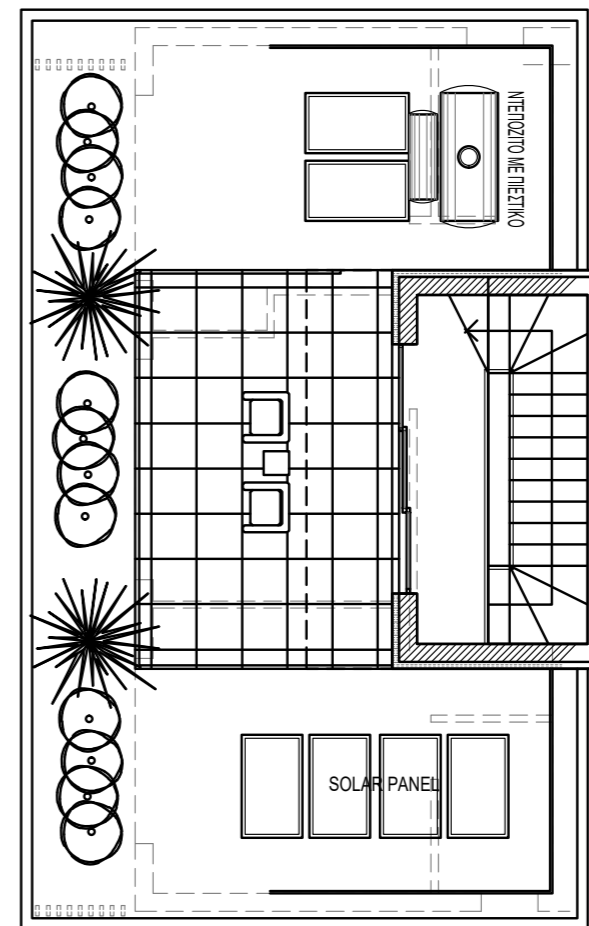
GROUND FLOOR



# PLANS



1ST FLOOR PLAN



ROOF PLAN



**01** The Clubhouse at Elite Residences is a refined blend of social and culinary sophistication. Boasting an elegant restaurant, bar, gym and sauna, its panoramic views and chic decor makes it a central hub where residents can unwind, fostering a sense of community and luxury within the heart of Elite Residences.

# THE CLUB

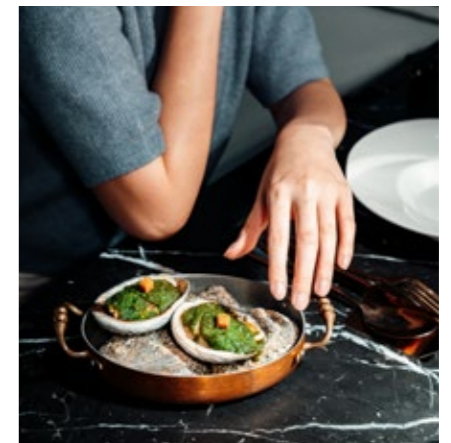






# HOUSE

02 As the sun sets, the Clubhouse transforms into a vibrant social center, where residents come together to enjoy delectable dishes, artisanal cocktails and relaxation. Its seamless fusion of architectural elegance and gastronomic innovation and spa facilities is the epitome of elite living. Whether for an intimate dinner or lively gathering, the Clubhouse adapts to every occasion, exemplifying opulence and community at the core of the Elite Residences.



**THANK YOU**