

PANORAMA
APARTMENTS

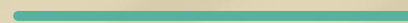


TABLE OF CONTENTS

1

THE PROJECT

2

PROJECT PLANS

8

KEY DISTANCES

9

INVESTMENT POTENTIAL

10

SPECIAL FEATURES

11

APARTMENT TYPES



THE PROJECT

Introducing Panorama Apartments, an exclusive gated community located in the developing area of lower Geroskipou, Cyprus. With its contemporary style and luxurious interiors, this residential complex offers a truly exceptional living experience. The community comprises five apartment blocks, thoughtfully designed to maximize the breathtaking panoramic sea views that can be enjoyed from nearly every unit.

The apartments within Panorama Apartments are a testament to sophistication and elegance, boasting sleek and modern architectural designs. The community features round-the-clock security, ensuring a safe and secure environment for all.

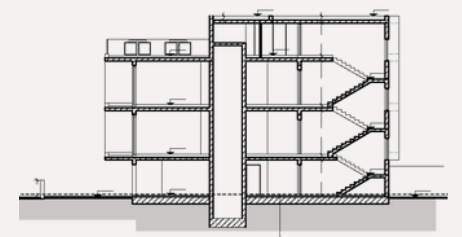
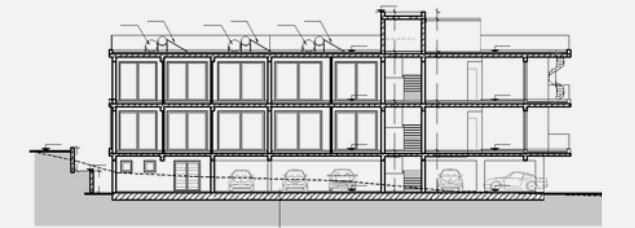
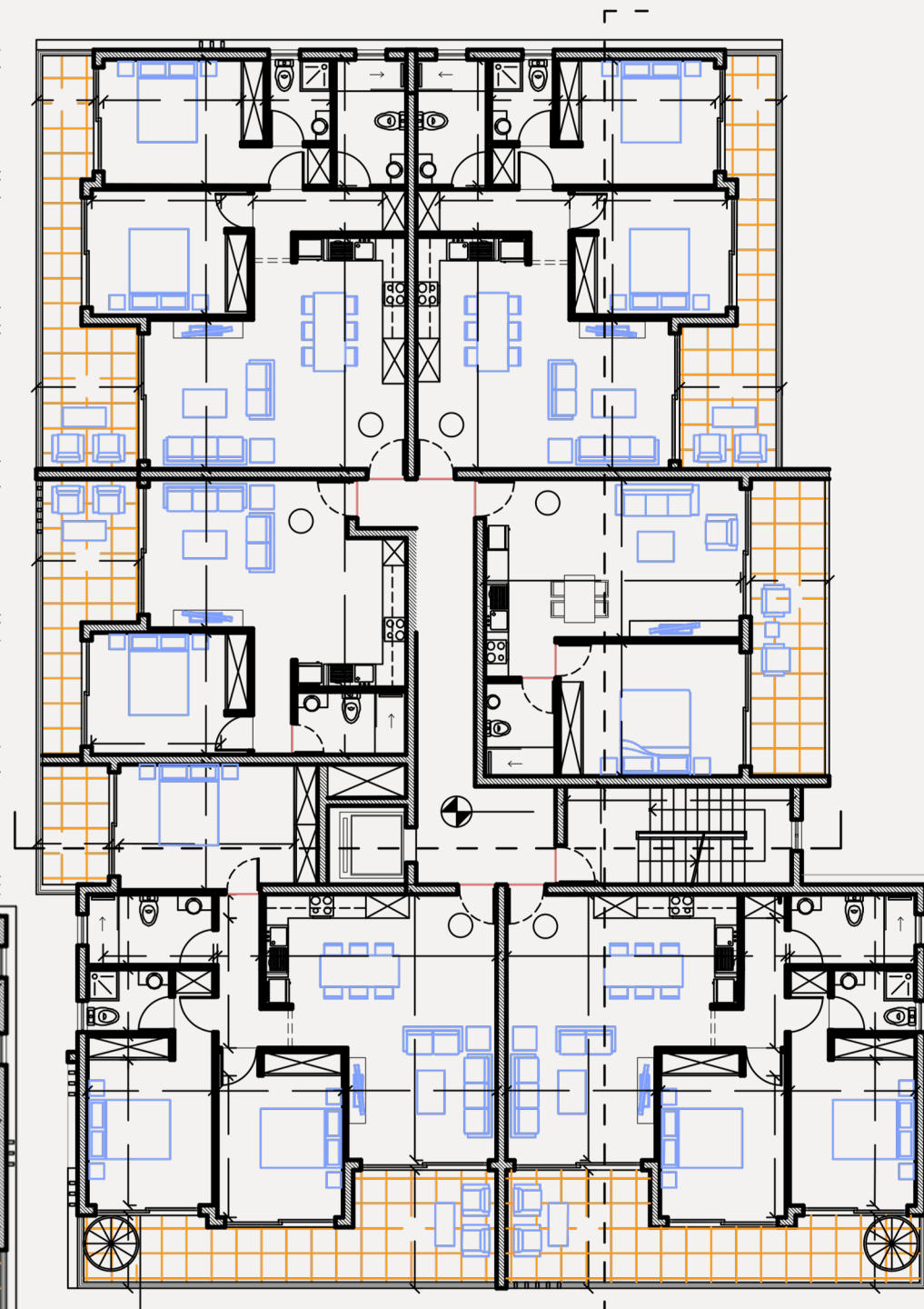
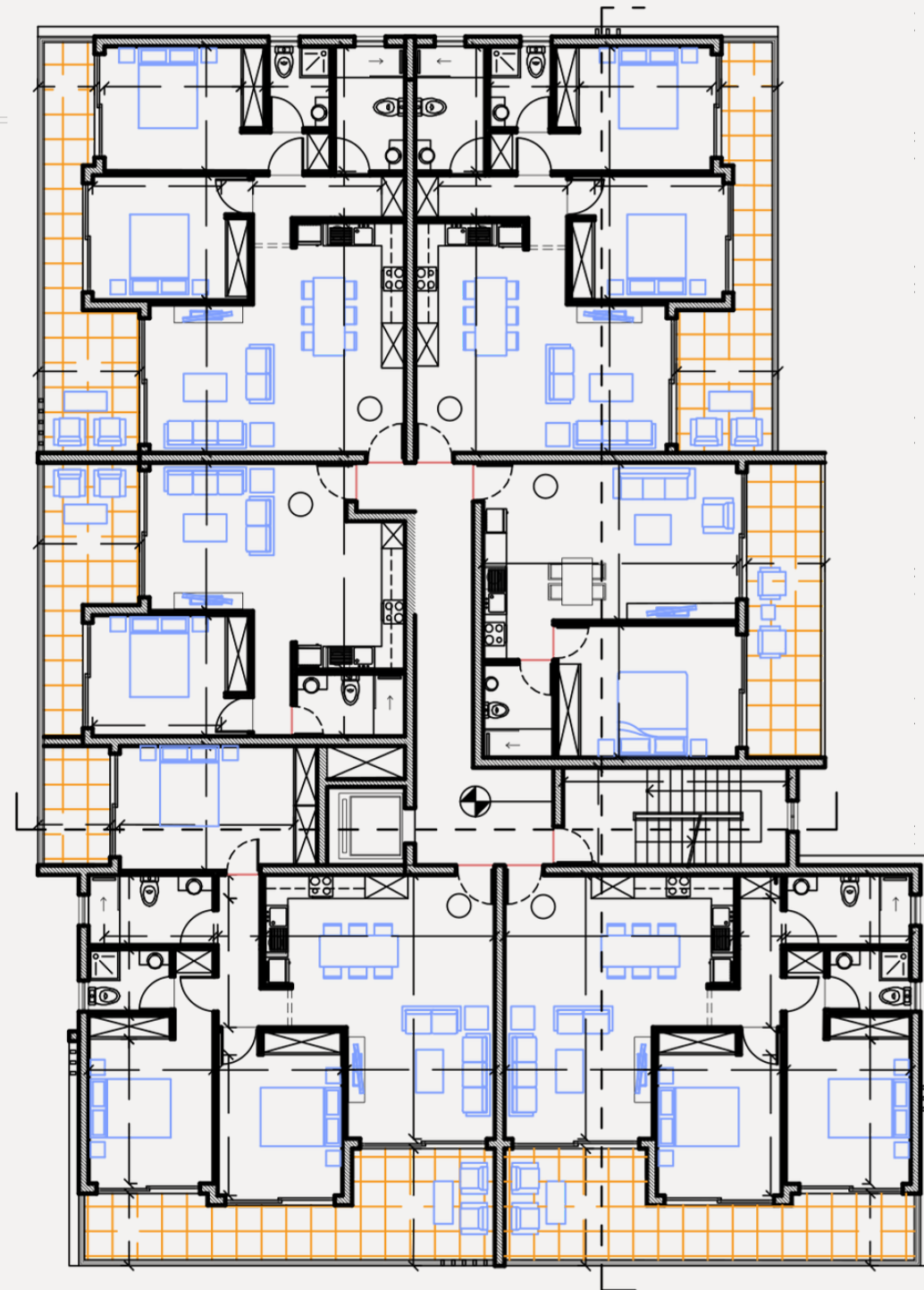
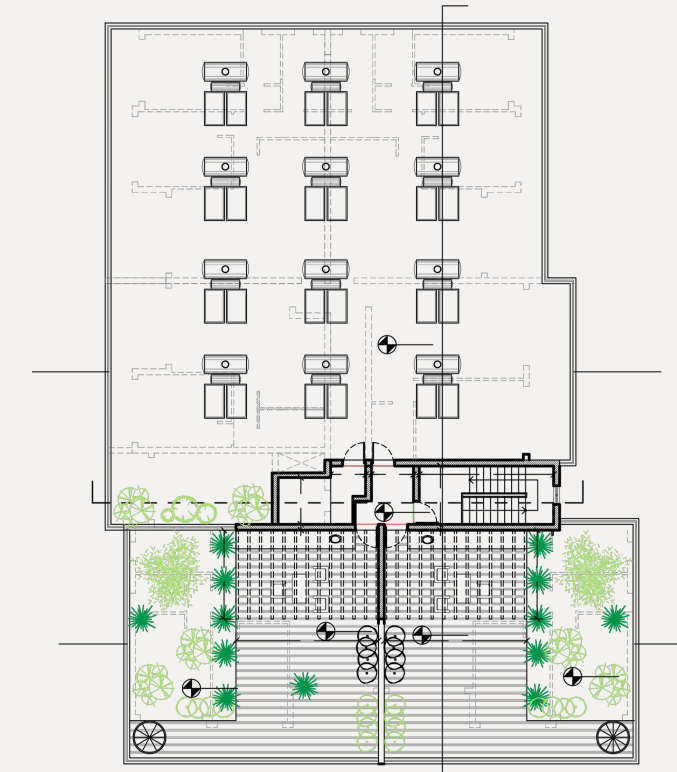
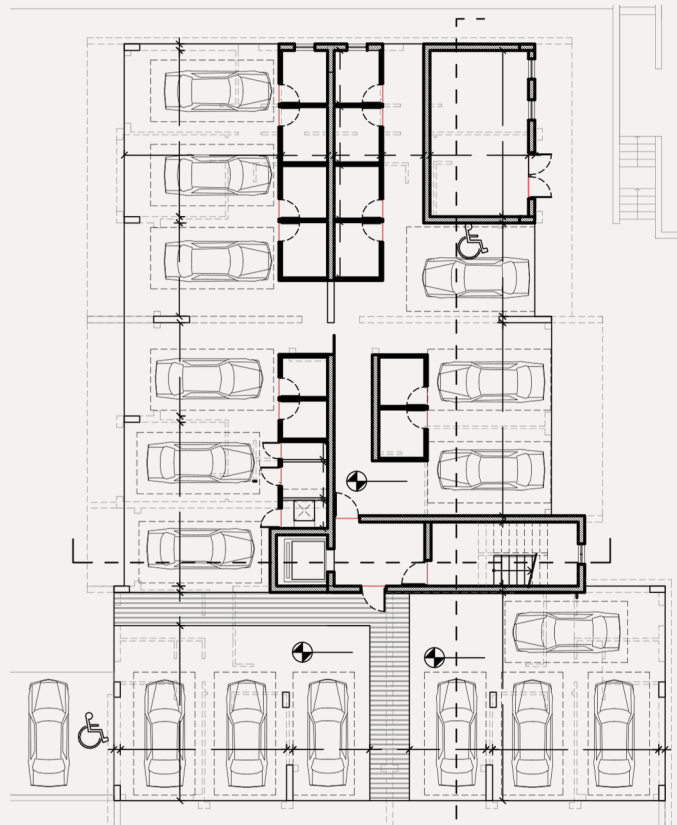
There is a fully equipped gym, allowing residents to maintain an active lifestyle without leaving the premises. A large communal pool provides a refreshing oasis, while changing rooms offer convenience and comfort. The development offers a variety of one, two and three-bedroom apartments to suit different preferences and lifestyles.





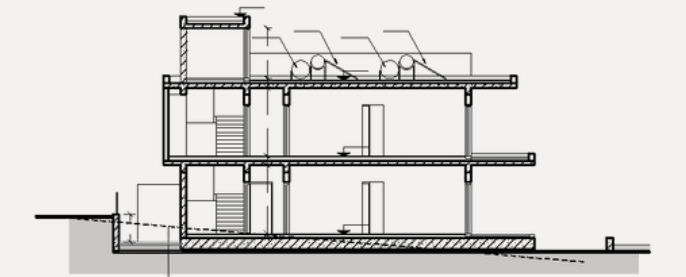
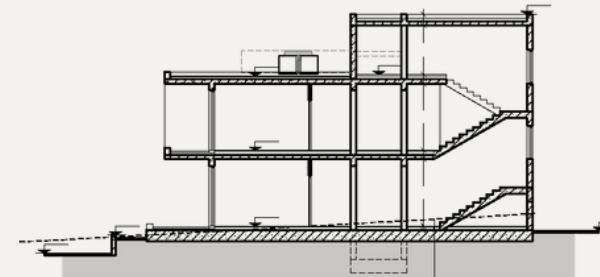
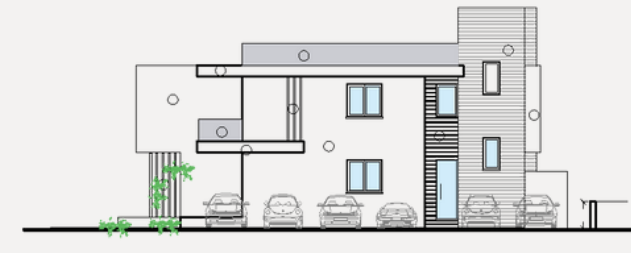
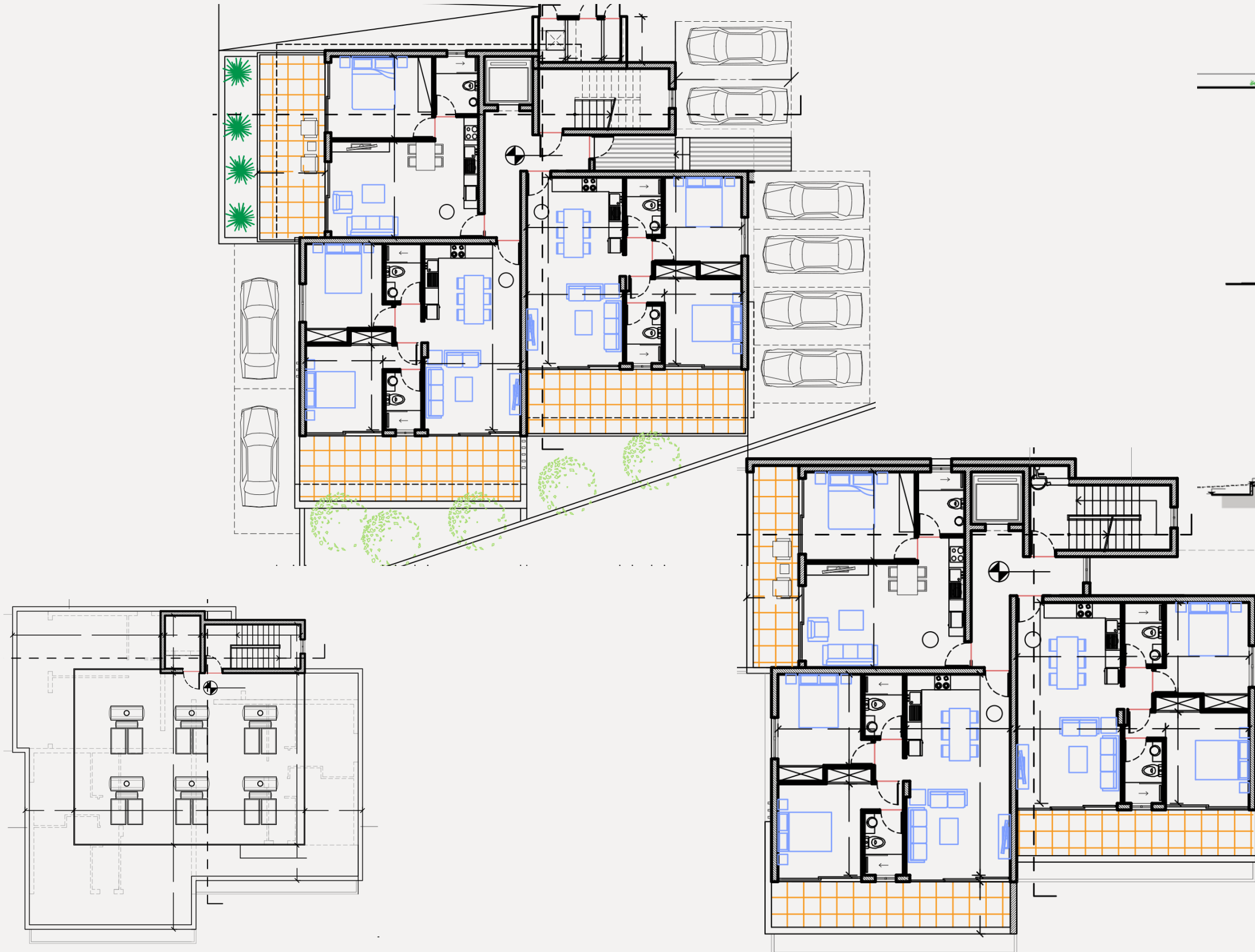
MASTER PLAN

PLANS - BLOCK A



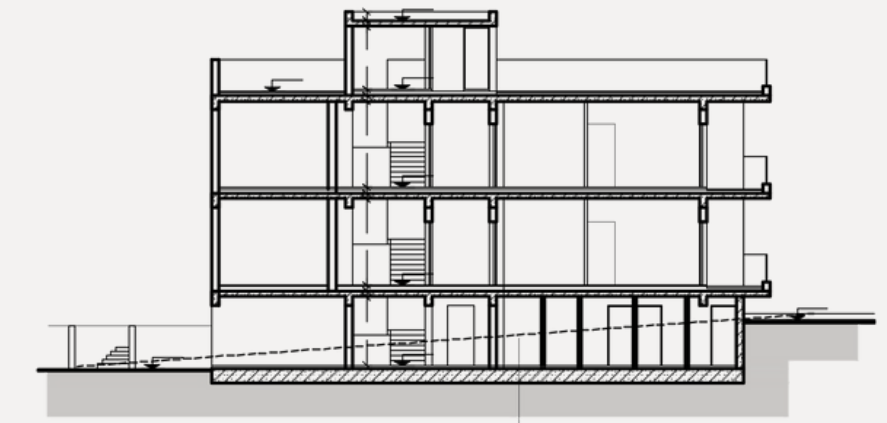
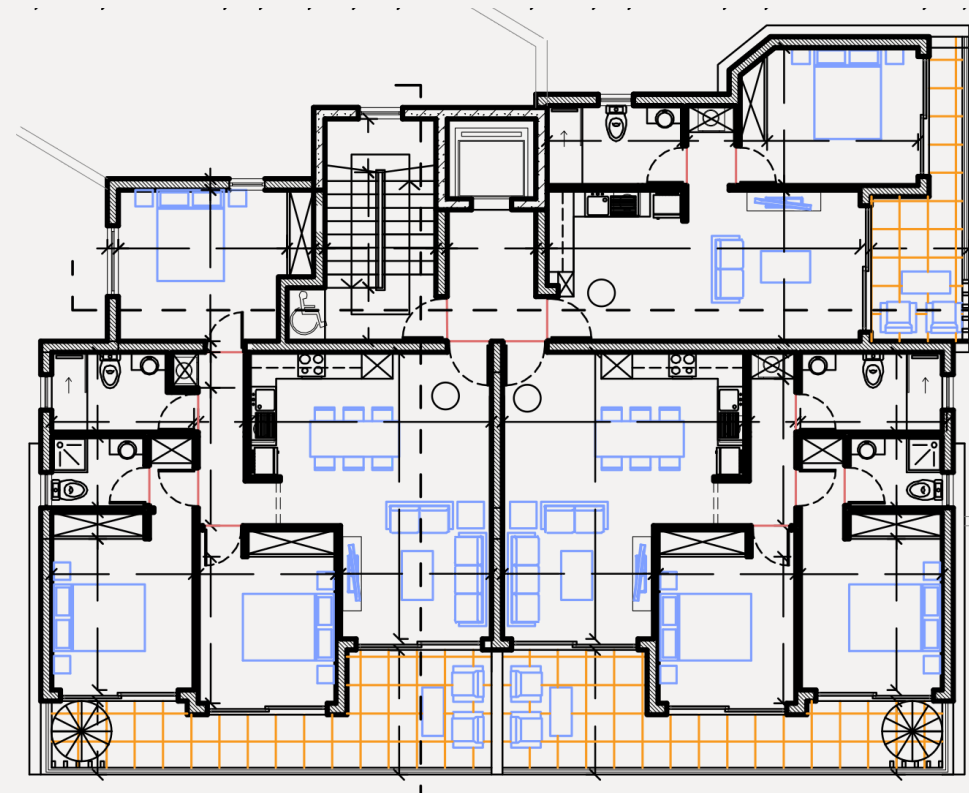
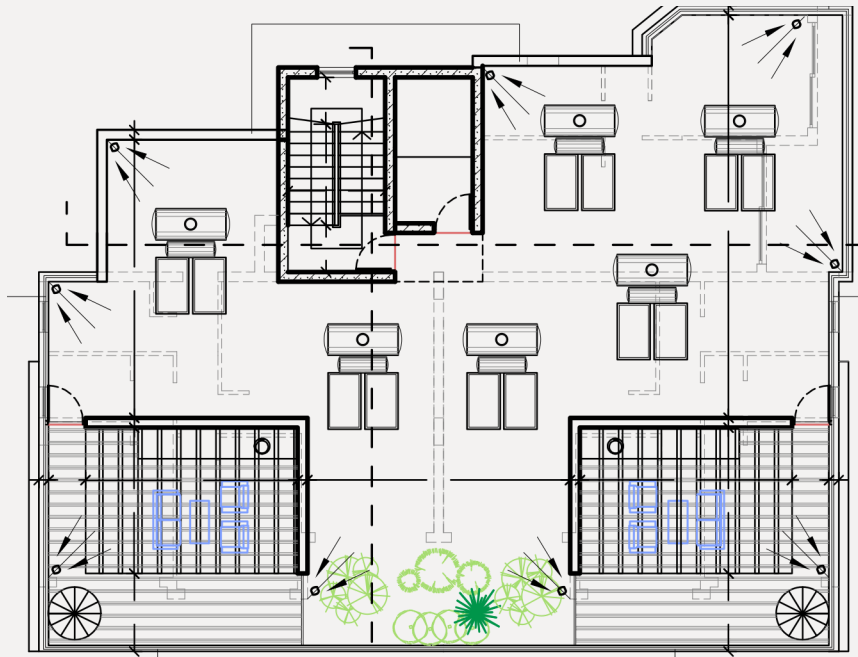
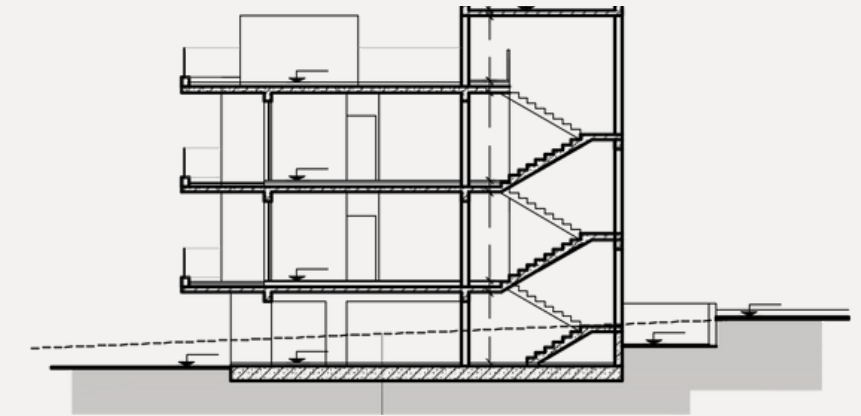
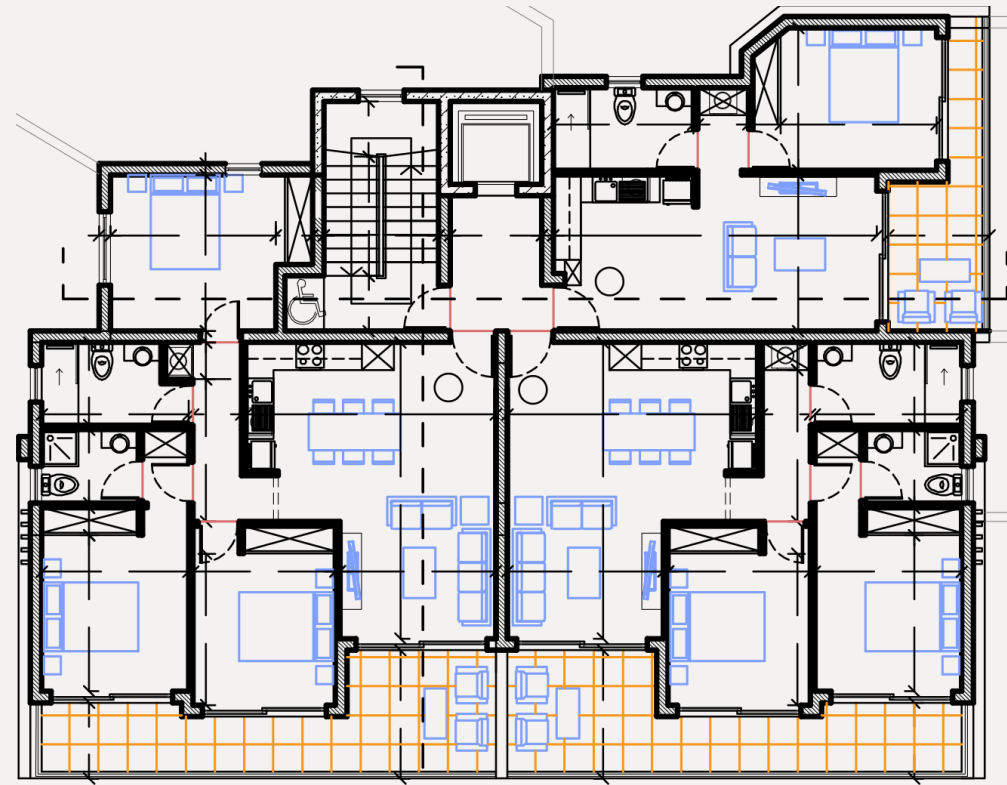
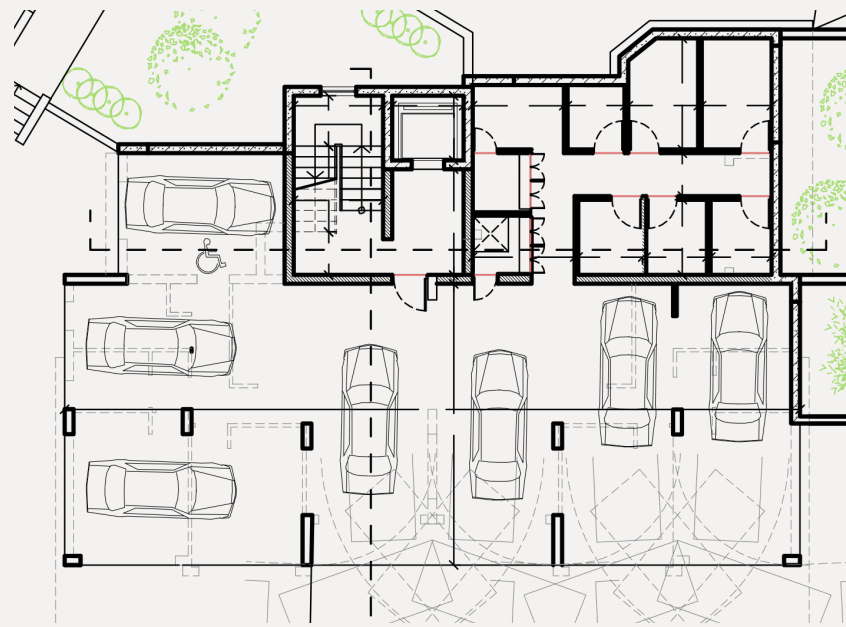


PLANS - BLOCK B

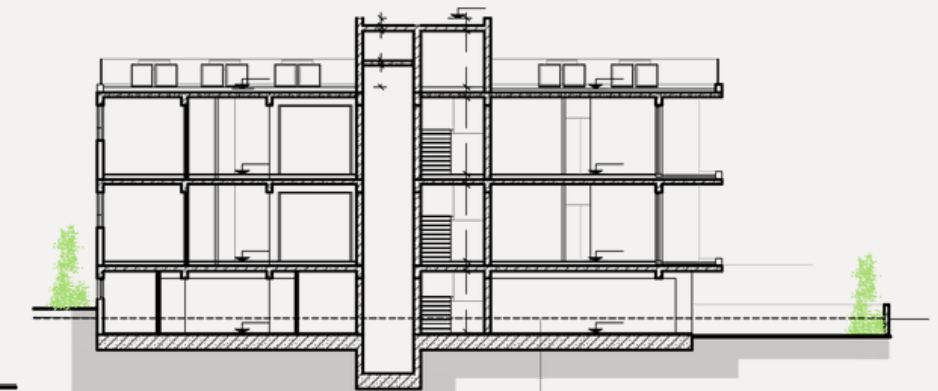
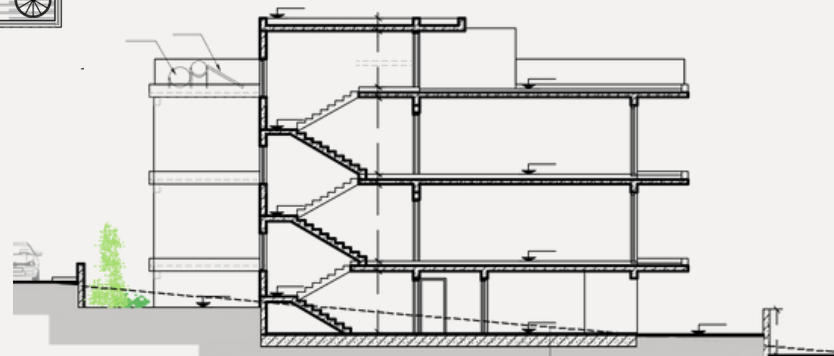
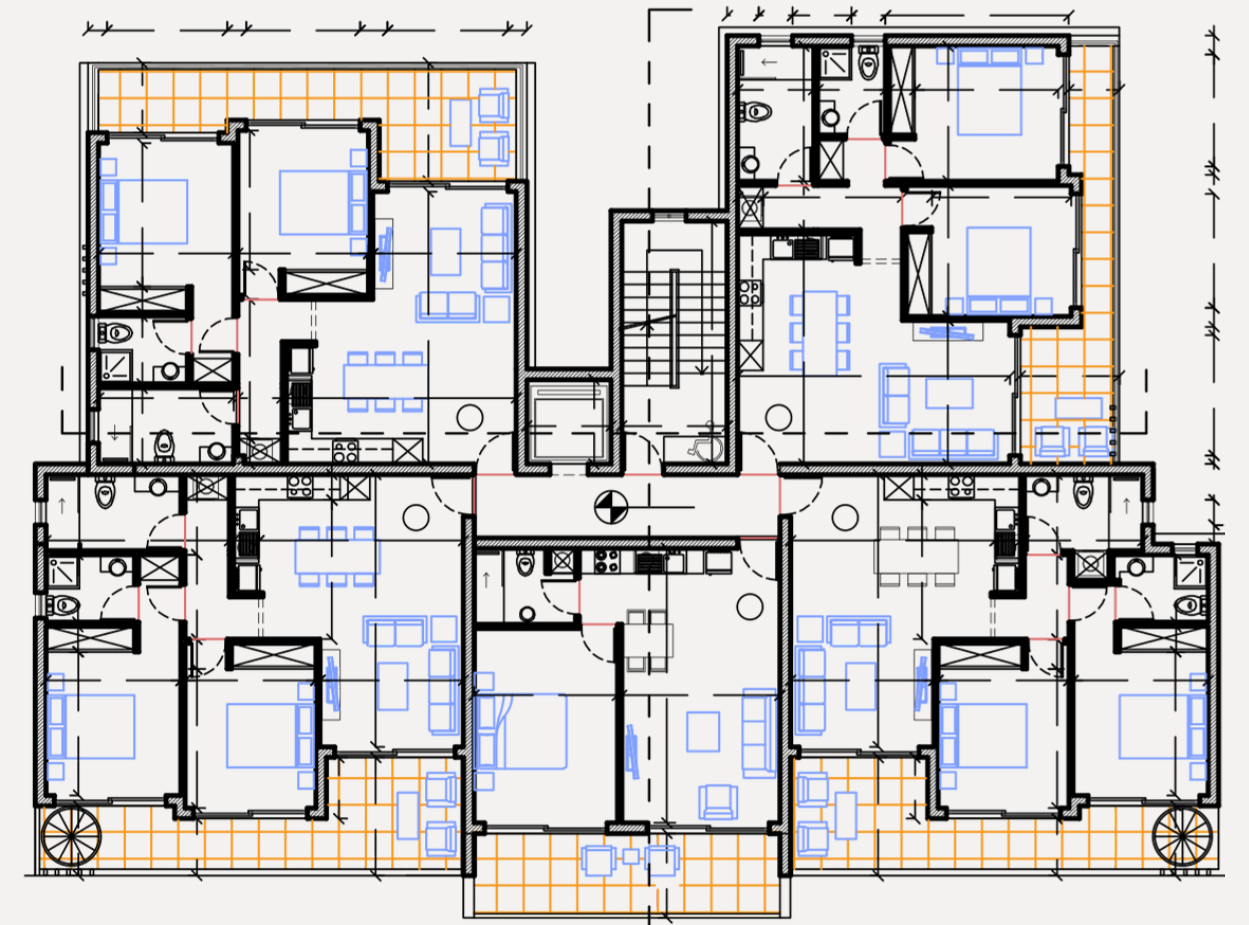
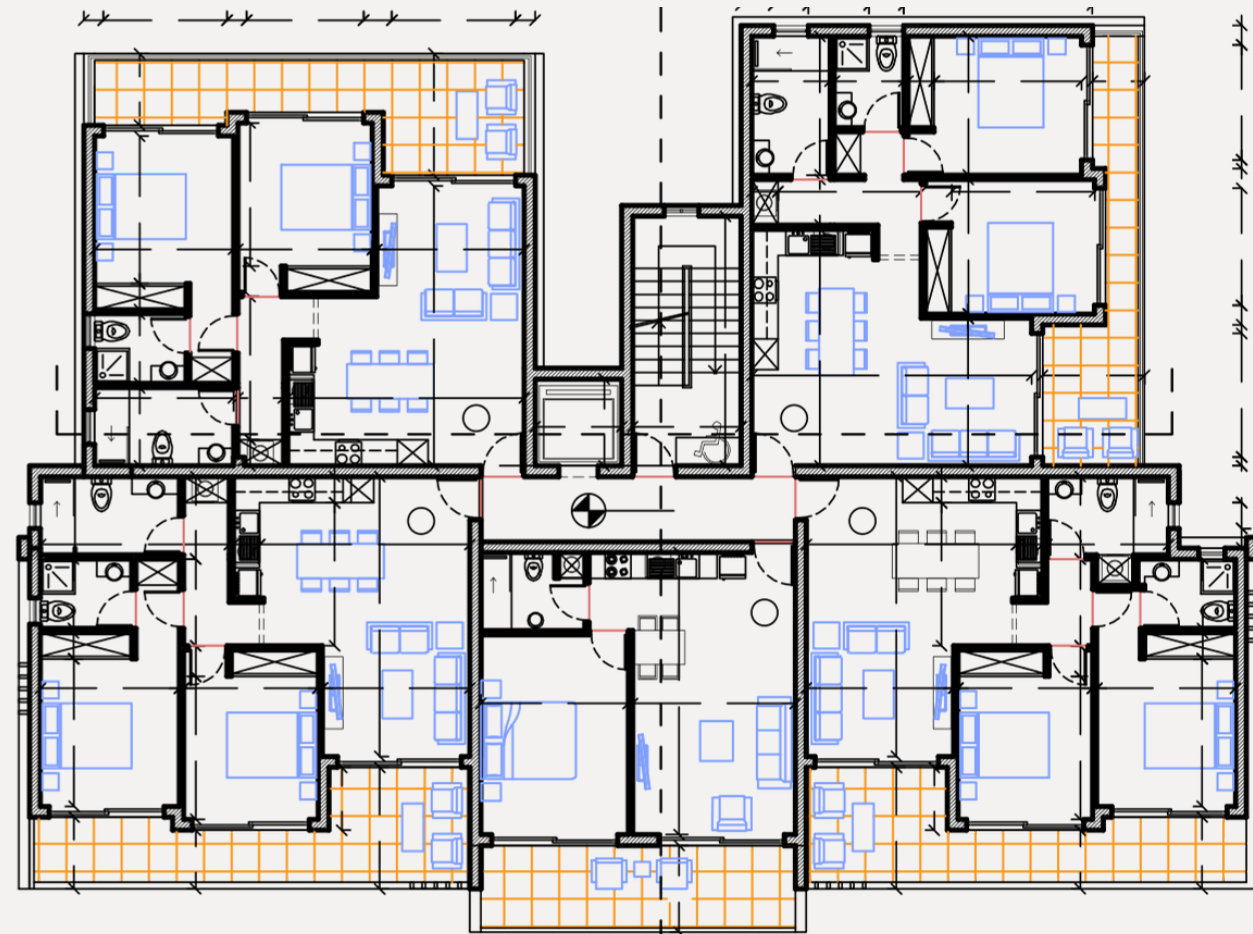
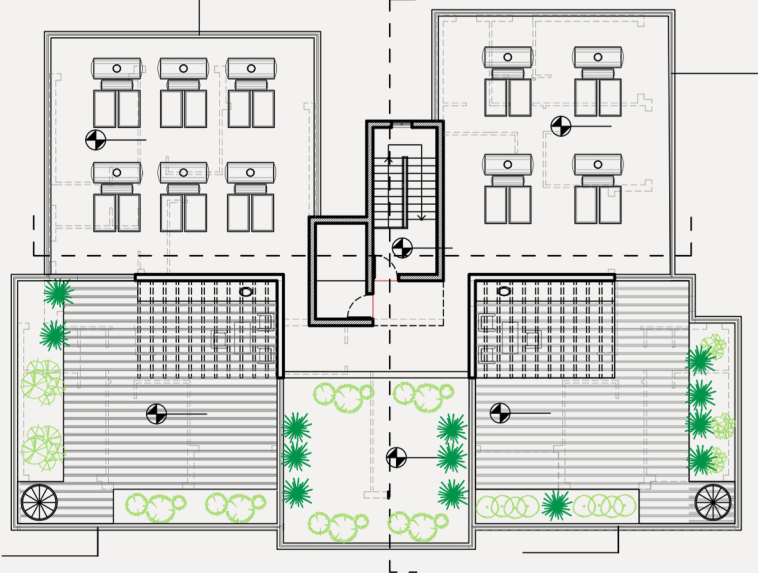
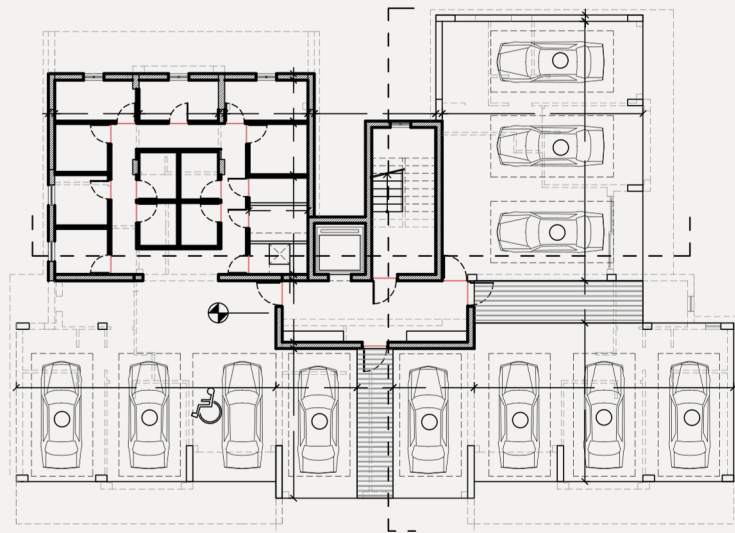




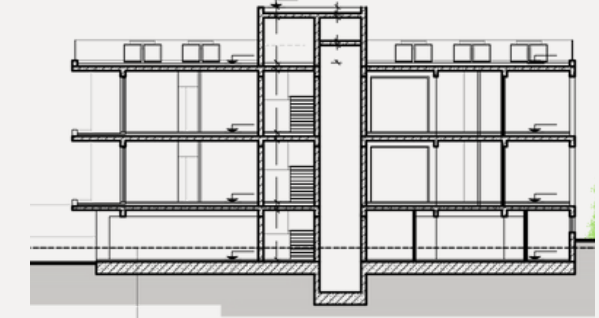
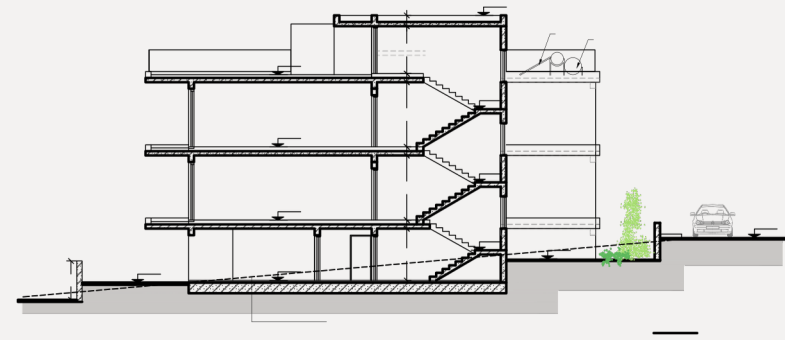
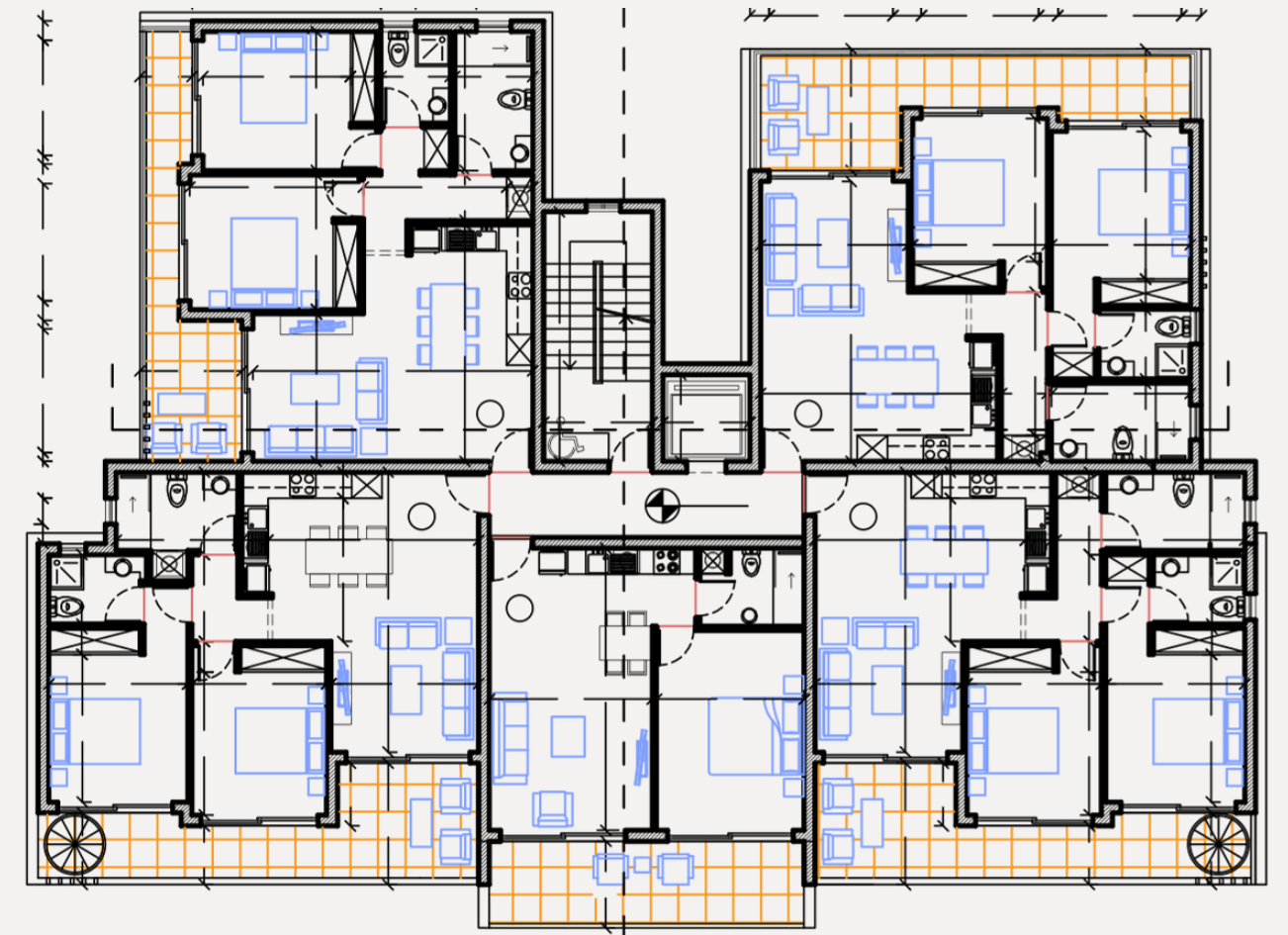
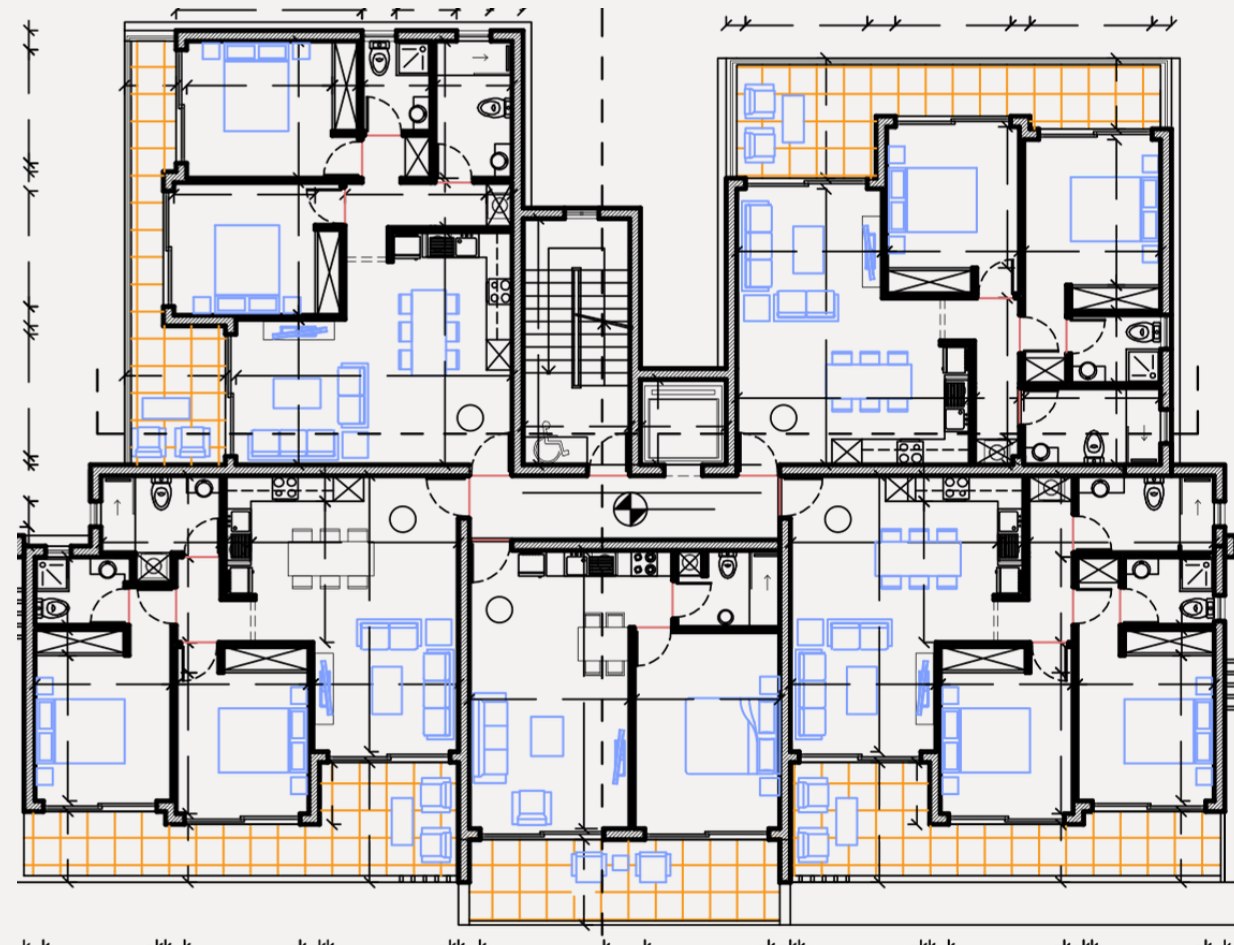
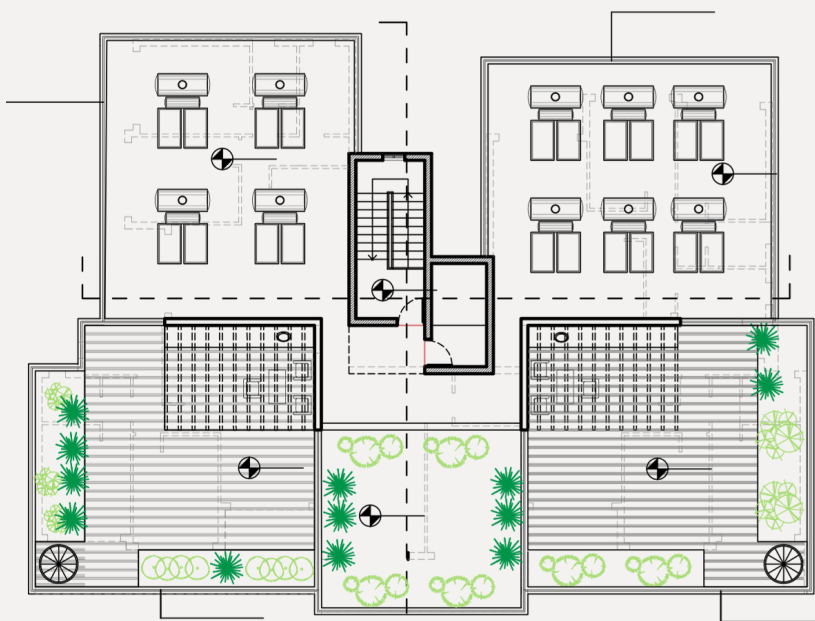
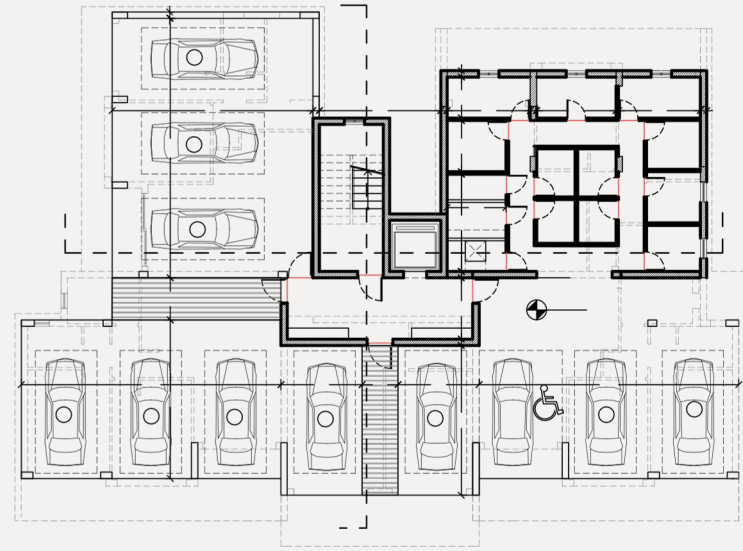
PLANS - BLOCK C



PLANS - BLOCK D

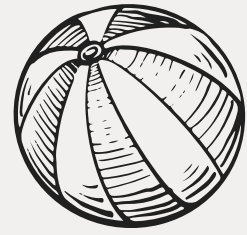


PLANS - BLOCK E





KEY DISTANCES



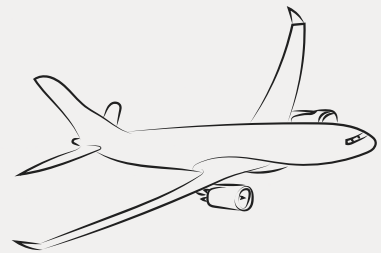
BEACH 2.7KM | 5MIN



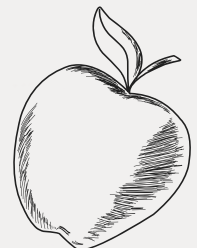
TOWN CENTRE 4.3KM | 10MIN



GOLF COURSE 4.2KM | 7MIN



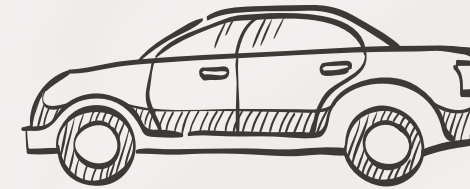
AIRPORT 15KM | 11MIN



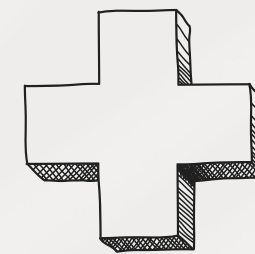
GROCERY STORE 1.4KM | 3MIN



PRIVATE HOSPITAL 3.5KM | 3.5MIN



HIGHWAY 4.9KM | 7KM



GENERAL HOSPITAL 5.7KM | 10MIN



INTERNATIONAL SCHOOL 7.4KM | 12MIN



INVESTMENT POTENTIAL

PANORAMA APARTMENTS IS THE PERFECT OPPORTUNITY FOR AN INVESTMENT AND A KEEN PROJECT TO HAVE ON ONES INVESTMENT PORTFOLIO. WITH ITS WALKING PROXIMITY TO NECESSARY AMENITIES, STUNNING VIEWS AND ENDLESS POTENTIAL OF THE AREA, IT WILL BE ONE OF THE FIRST MAJOR PROJECTS IN THE AREA AND THE APPRECIATION OF THE PROJECT AND GENERAL AREA OF LOWER GEROSKIPOU IS SET TO SKY-ROCKET. MULTIPLE INVESTMENTS INTO INFRASTRUCTURE AND SMART AMENITIES BY THE GOVERNMENT AS PART OF PAPHOSS' NOMINATION OF CAPITAL OF SMART TOURISM BY THE EU COMMISSION FOR 2023 HAS ALREADY CHANGED THE APPEAL AND DEMAND OF THE AREA IN THE MARKET.

RESIDENTS OF PANORAMA APARTMENTS HAVE ACCESS TO AN ARRAY OF STATE-OF-THE-ART AMENITIES.

THE COMMUNITY FEATURES ROUND-THE-CLOCK SECURITY, ENSURING A SAFE AND SECURE ENVIRONMENT FOR ALL RESIDENTS.

THERE IS A FULLY EQUIPPED GYM, ALLOWING RESIDENTS TO MAINTAIN AN ACTIVE LIFESTYLE WITHOUT LEAVING THE PREMISES.

A LARGE COMMUNAL POOL PROVIDES A REFRESHING OASIS, WHILE CHANGING ROOMS OFFER CONVENIENCE AND COMFORT.

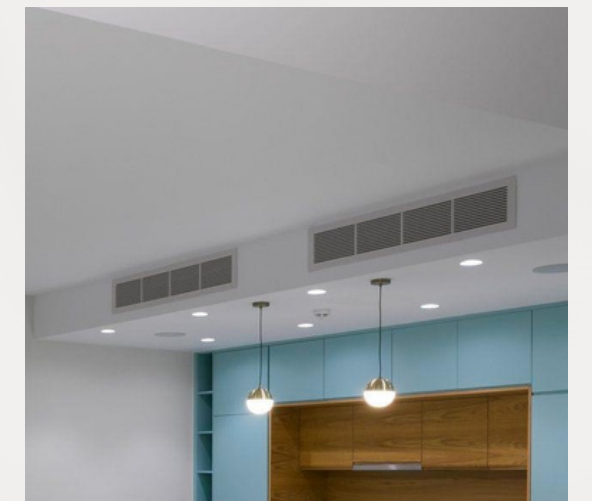
CYPRUS

- EXPECTED CAPITAL GAIN GROWTH 4-6% A YEAR
- EXPECTED RENTAL YIELDS 5-6% PER YEAR
- INVESTMENT HUB DUE TO TAX EFFICIENT STATUS
- TOURISM, REAL-ESTATE AND CONSTRUCTION ARE MAIN INDUSTRIES



SPECIAL FEATURES

VRV TECHNOLOGY	THERMAL ALUMINIUM WINDOWS
GATED COMMUNITY	GARDEN-ACCESS APARTMENTS
ROOF-TOP ACCESS PENTHOUSES	PHOTOVOLTAIC PROVISIONS
ALLOCATED PARKING	COMMUNAL GYM
COMMUNAL POOL AND CHANGING ROOMS	CUSTOMIZABLE INTERIOR
CUSTOM WARDROBES AND CABINETS	ALLOCATED STORAGE
SECURITY PATROL	PANORAMIC SEA VIEWS



APARTMENT TYPES

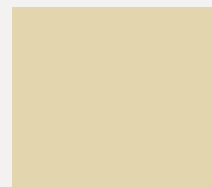
1-BEDROOM

Internal Covered Area SQM	Veranda Area SQM	Total Covered Area SQM	Price (Euros)
52	15	67	285,000
54	15	69	295,000
52	15	67	305,000
52	14.5	66.5	350,000
52	14.5	66.5	370,000

3-BEDROOM

Internal Covered Area SQM	Veranda Area SQM	Total Covered Area SQM	Price (Euros)
105	32	137	400,000
110	18	128	400,000
105	32	137	500,000
110	18	128	500,000

KEY:



SEA-VIEW

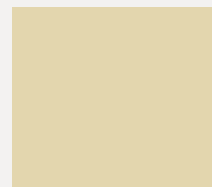


APARTMENT TYPES

2-BEDROOM

Internal Covered Area SQM	Veranda Area SQM	Total Covered Area SQM	Price (Euros)
80	20	100	320,000
86	22	108	320,000
77	18	95	330,000
86	22	108	340,000
77	18	95	370,000
77	18	95	450,000
86	22	108	450,000
78	19.5	97.5	470,000

KEY:



SEA-VIEW

