

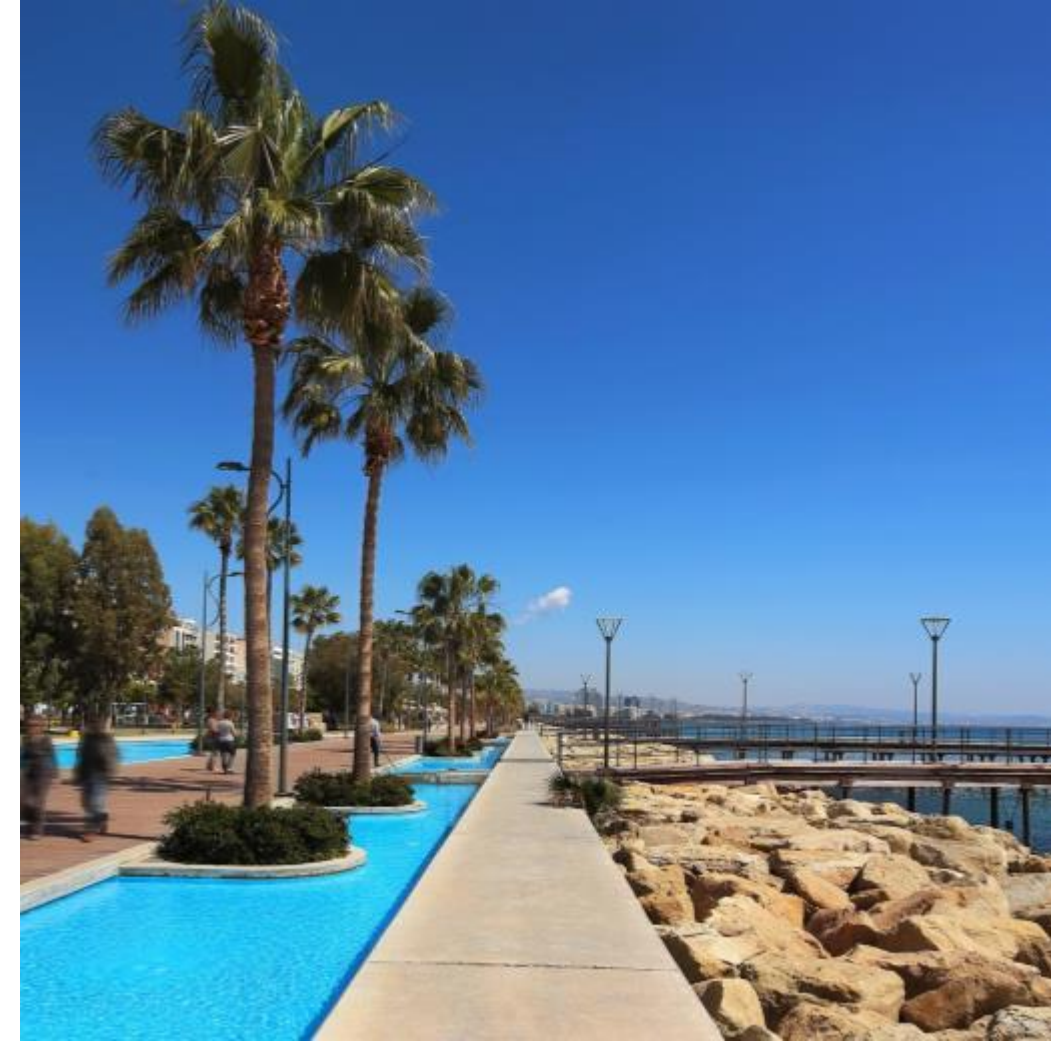
Vida
SUITES



LIMASSOL

THE CITY OF CHOICE

Limassol is Cyprus' cosmopolitan capital, its most important business district and a vibrant modern playground. It is consistently ranked as one of the world's leading cities for quality of life. Nowhere in Cyprus is there a richer mix of modern culture and fascinating heritage.



Limassol's enchanting promenade is situated on the prime seafront boulevard. It is the ideal place for walking, jogging, spending time on the beach or taking time for peaceful contemplation under the shade of a mature palm tree.



Vibrant Limassol

The city offers an active, vibrant and varied choice of restaurants, stylish cafes, bars and chic lounges.





A MIX OF FINE AND CASUAL DINNING

An Adventure in Taste

Limassol's gastronomic scene comprises a delicious mix of fine and casual dining. It offers a great selection of cuisines as well as local traditional food.

Private Schools

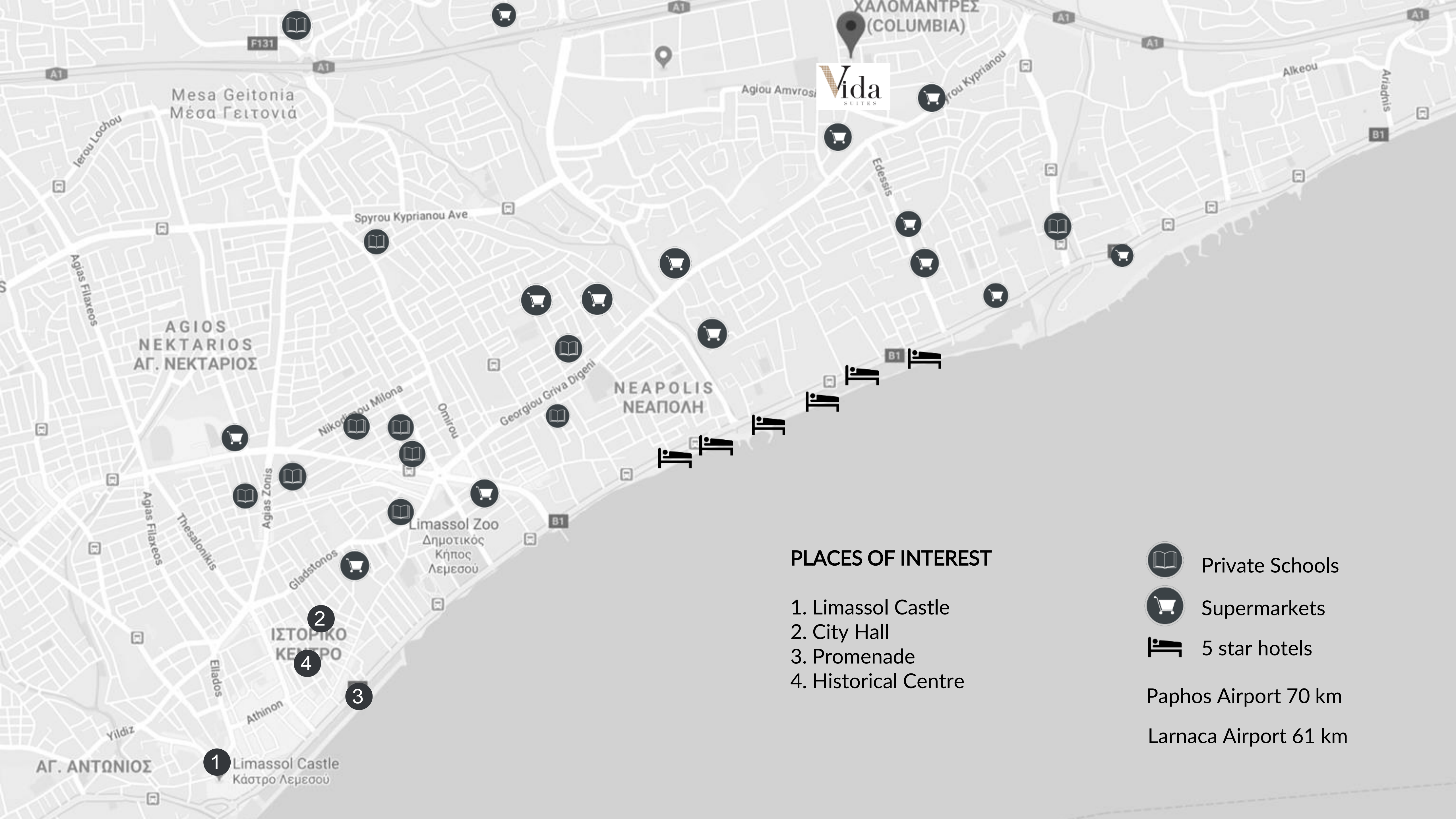
There are a number of private schools (Greek, English, French, and Russian) available in Limassol.





Block A




Block B



Vida
SUITES

PLACES OF INTEREST

- 1. Limassol Castle
- 2. City Hall
- 3. Promenade
- 4. Historical Centre

-  Private Schools
-  Supermarkets
-  5 star hotels

Paphos Airport 70 km
Larnaca Airport 61 km

1 Limassol Castle
Κάστρο Λεμεσού

4 ΙΣΤΟΡΙΚΟ
ΚΕΝΤΡΟ

2

3

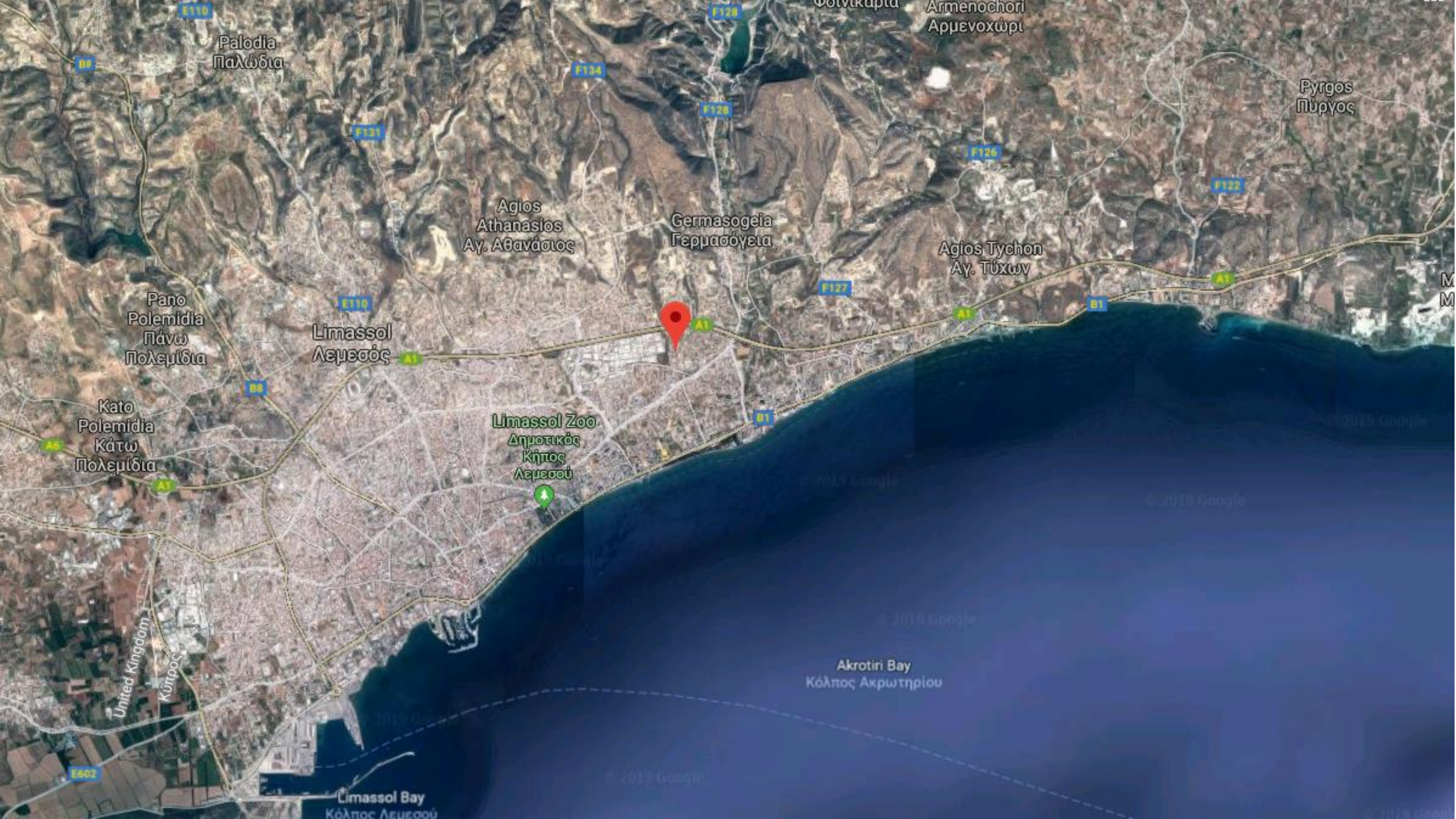
ΑΓ. ΑΝΤΩΝΙΟΣ

ΝΕΑΡΟΛΙΣ
ΝΕΑΠΟΛΗ

ΑΓΙΟΣ
ΝΕΚΤΑΡΙΟΣ
ΑΓ. ΝΕΚΤΑΡΙΟΣ

Μεσα Γειτονιά
Μέσα Γειτονιά

ΧΑΛΟΜΑΝΤΡΕΣ
(COLUMBIA)



Palodia
Παλώδια

Φοινικάρια
Armenochori
Αρμενοχώρι

Pyrgos
Πύργος

Agios
Athanasios
Αγ. Αθανάσιος

Germasogeia
Γερμασόγεια

Agios Tychon
Αγ. Τύχων

Pano
Polemida
Πάνω
Πολεμίδα

Limassol
Λεμεσός

Kato
Polemida
Κάτω
Πολεμίδα

Limassol Zoo
Δημοτικός
Κήπος
Λεμεσού

Akrotiri Bay
Κόλπος Ακρωτηρίου

Limassol Bay
Κόλπος Λεμεσού

United Kingdom
Κύπρος

E602

E110

B9

F134

F128

F131

F126

F122

E110

B8

F127

B1

B1



A Five Star Location

Vida Suites is located minutes away from all Limassol's 5 star hotels.



Four Seasons Hotel



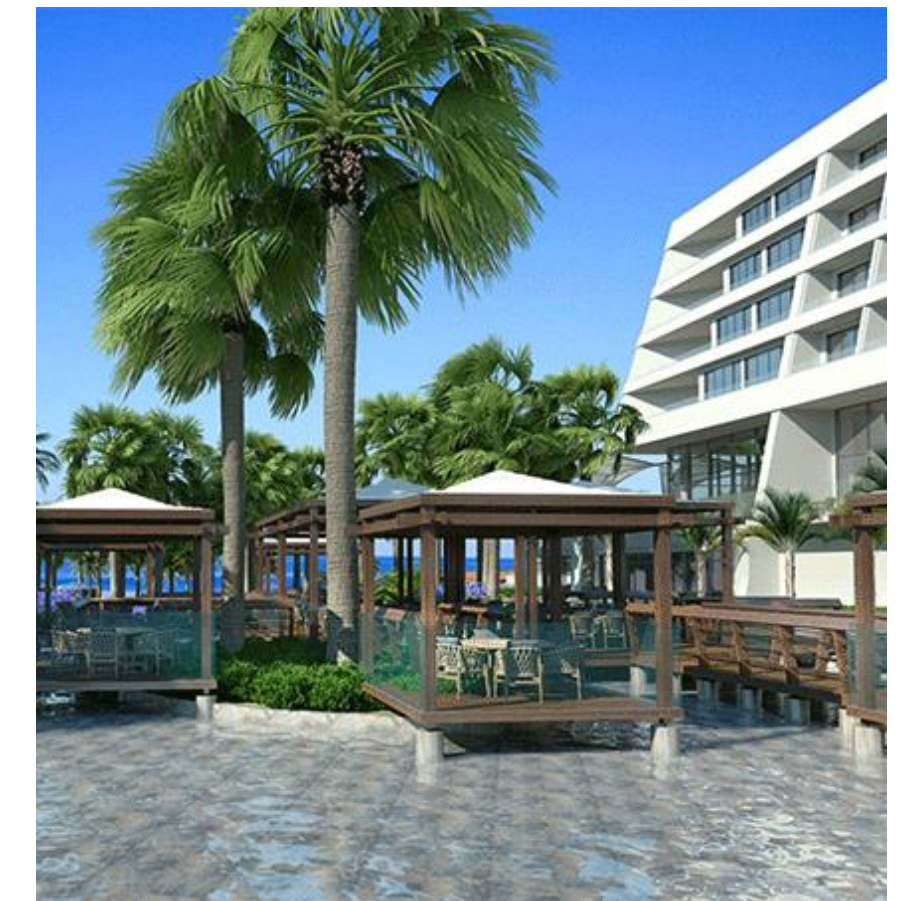
Amathus Beach Hotel



Grand Resort



Amara Hotel



Parklane Resort

Amenities

AMENITIES NEAR VIDA SUITES



Bakery 1 km



Supermarket 700 m



Private English School 4.2 km



Private Hospital 4 km



Pharmacy 1.7 km



Petrol Station 1.2 km



Restaurant 1.7 km



Bank 850 m



CAFES & BARS

Just 2.3 km away from a wide selection of chic cafes and beach bars.



SANDY BEACHES

A selection of sandy beaches are within 5 km away.



MARINA

Just 11 km away Saint Raphael Marina offers 237 berth marina with all amenities, accommodating boats up to 30m.

Views from the site



Views from the site





Location

Exclusive area in Limassol, centrally located and moments away from the coastline and amenities.

Area

A quiet residential neighborhood in the heart of the city.

Design

Modern and elegant with expansive glass and open-plan living.

About

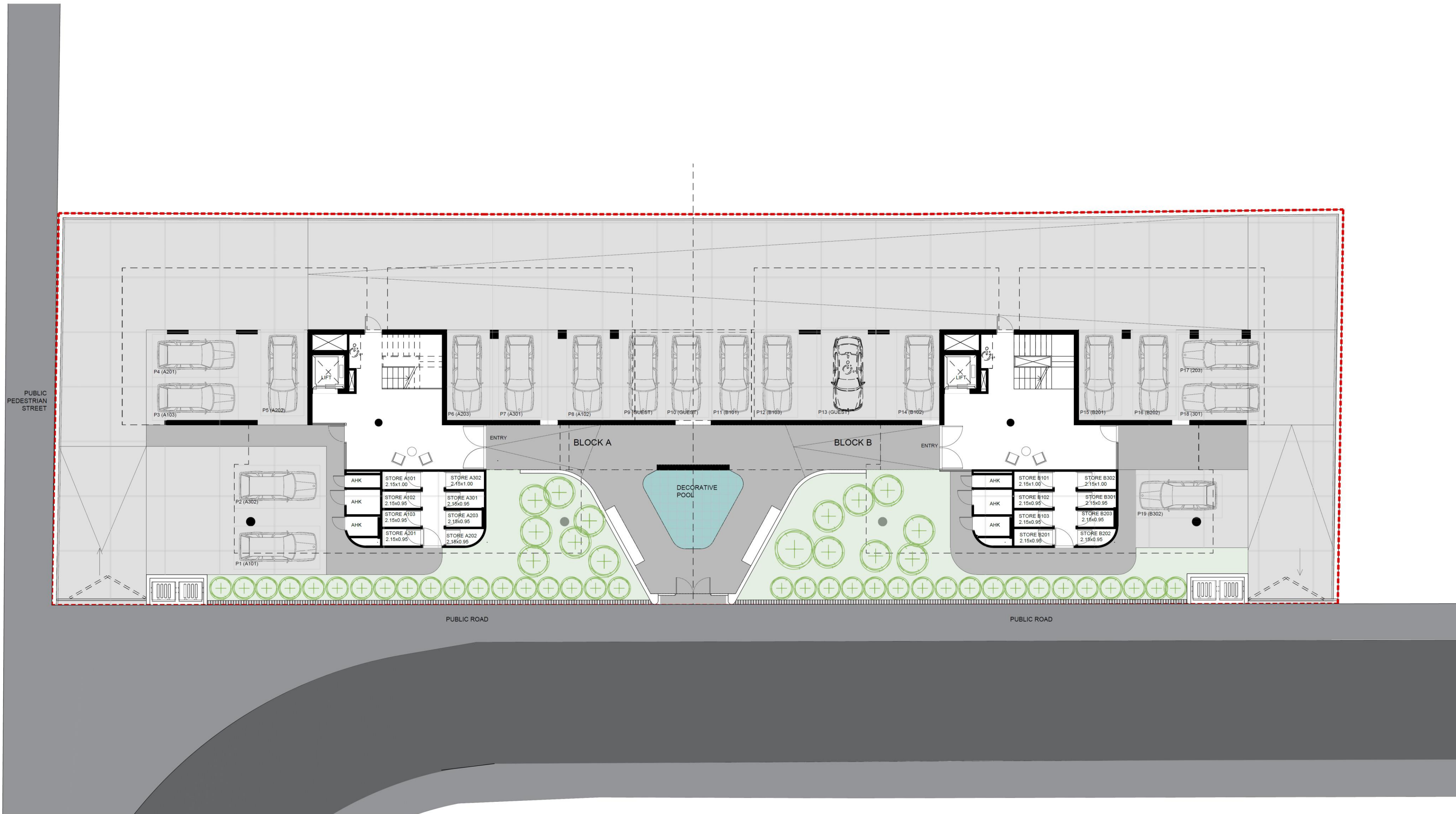
Comprising 16 luxuriously appointed 2 and 3 bedroom apartments with large terraces for Mediterranean living.



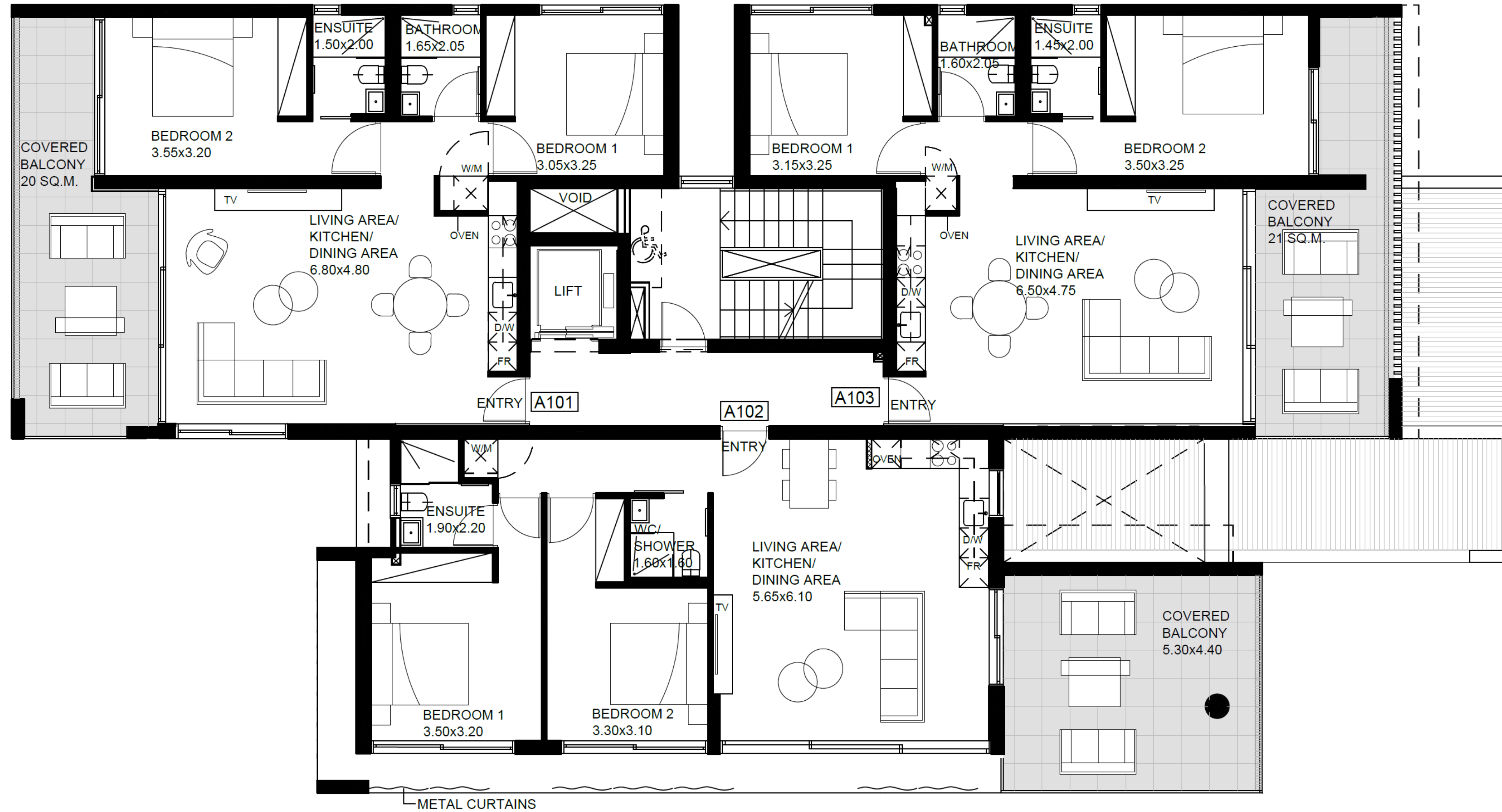
Block A

Block B

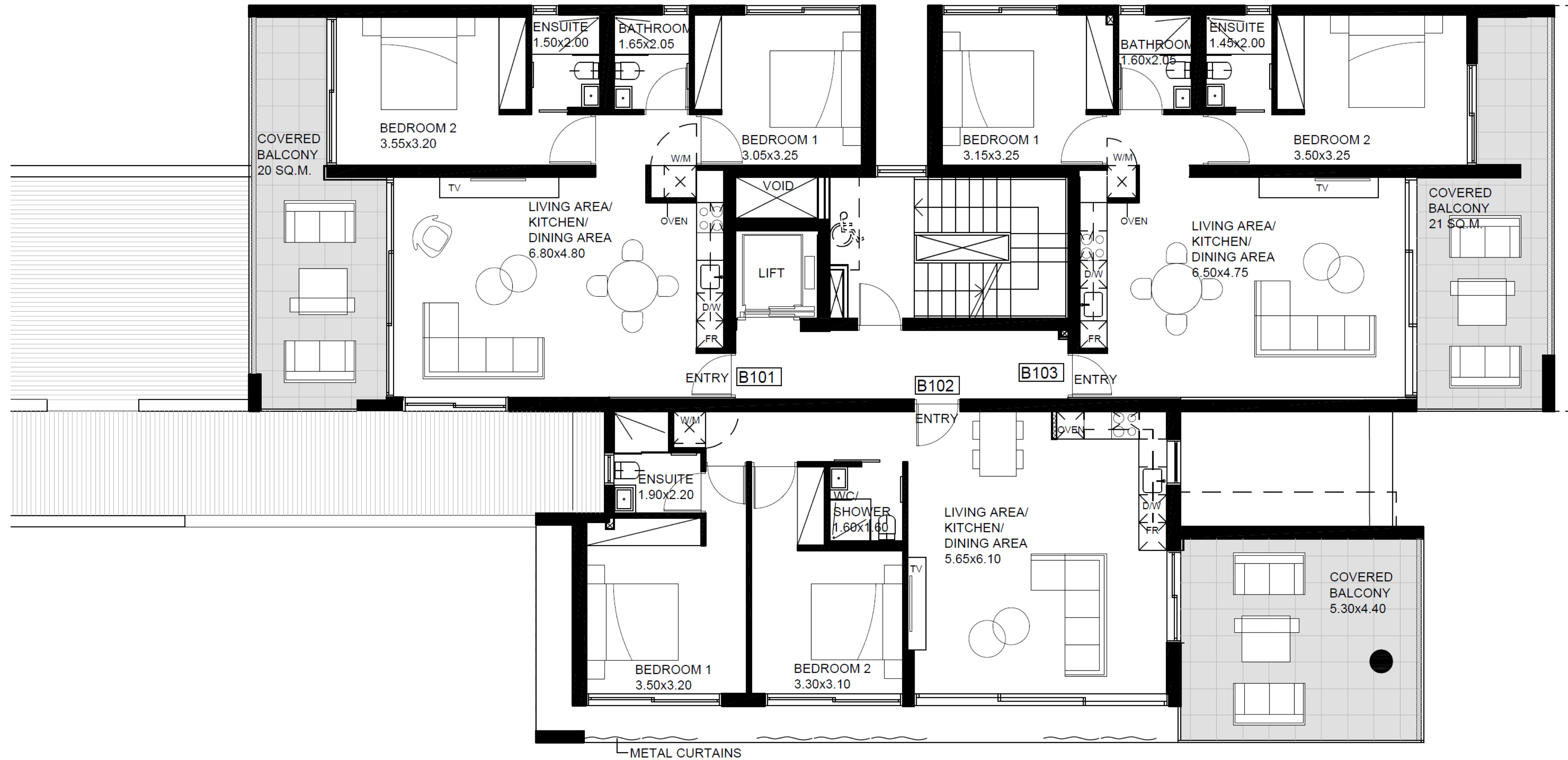
SITE PLAN



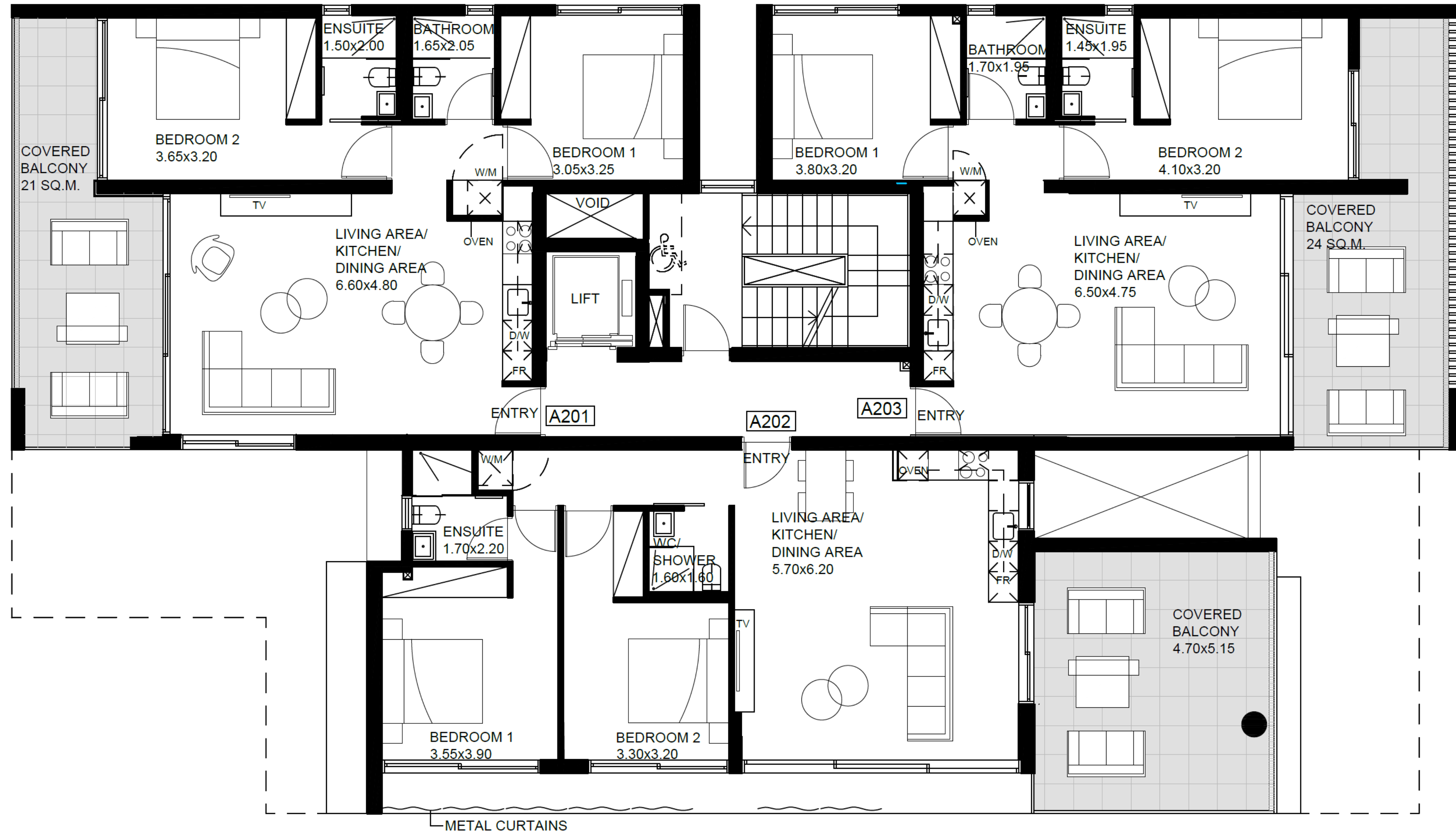
FIRST FLOOR PLANS - BLOCK A



FIRST FLOOR PLANS - BLOCK B



SECOND FLOOR PLANS - BLOCK A



SECOND FLOOR PLANS - BLOCK B



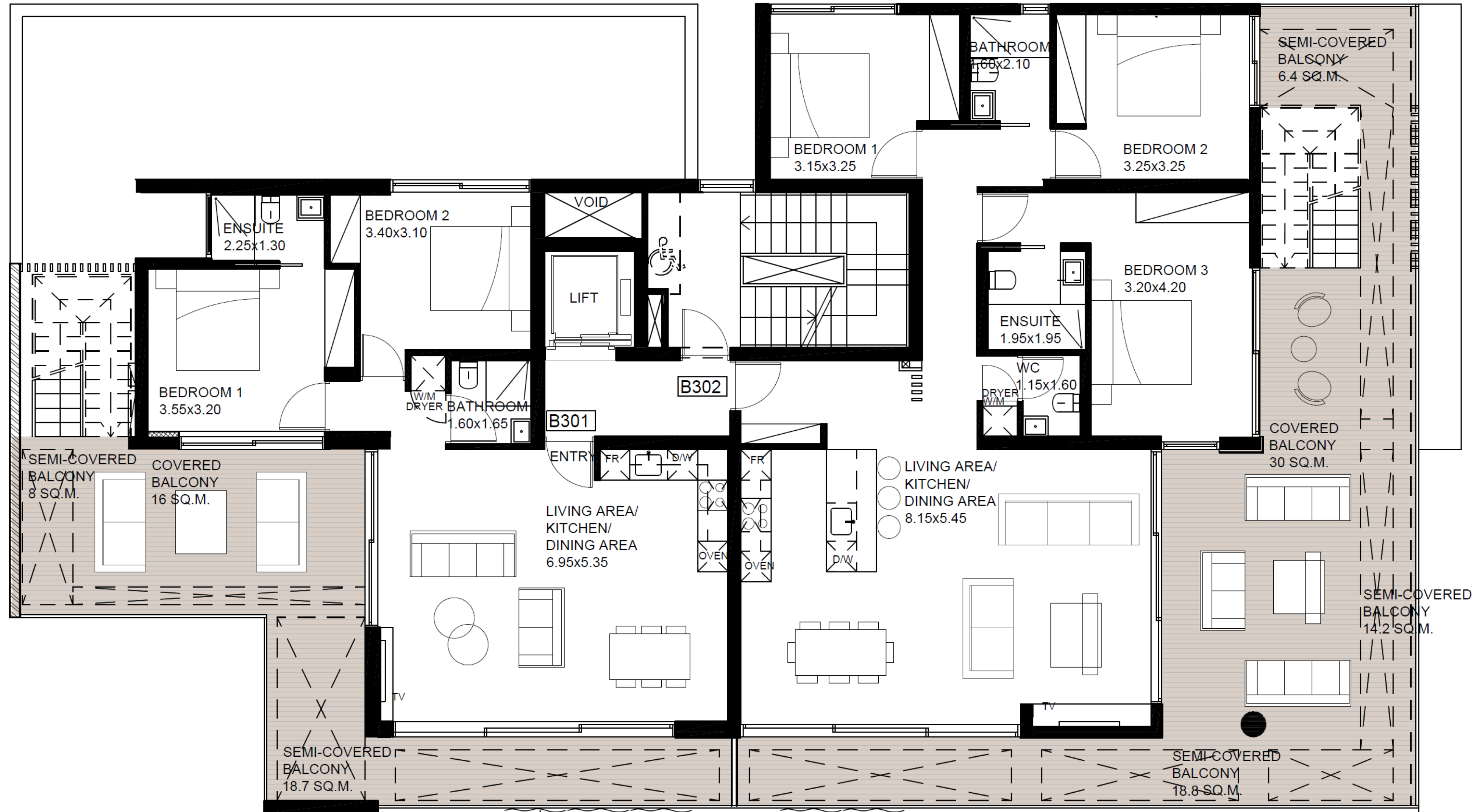


Block A

THIRD FLOOR PLANS – BLOCK A



THIRD FLOOR PLANS - BLOCK B





Block B302



Block B302

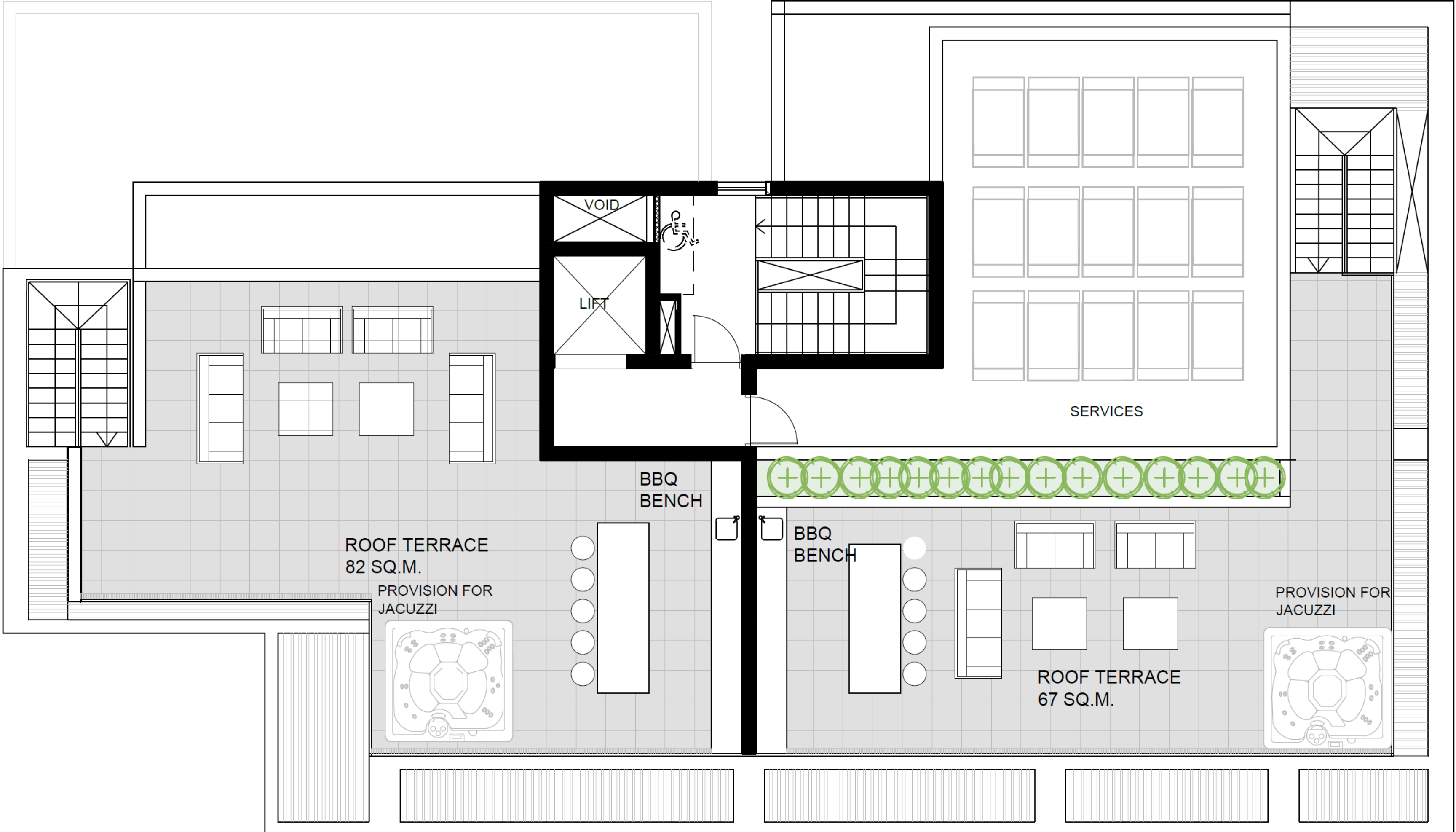


Block B302

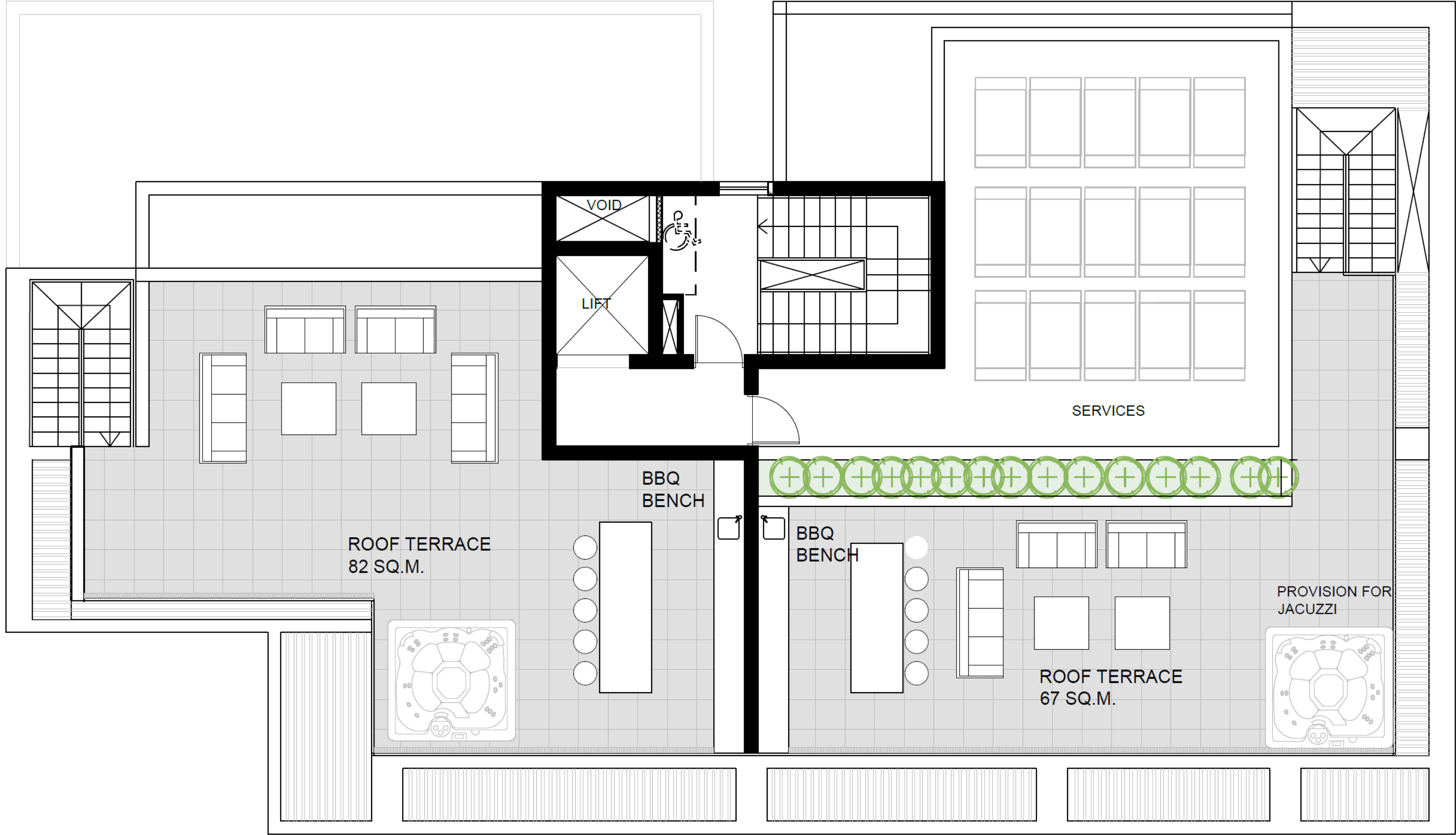


Block B302

ROOF PLANS - BLOCK A



ROOF PLANS - BLOCK B





Block B302

About us

Delivering outstanding quality, concept and design.

Our company

Largest private
Developer in Cyprus

250

Over 250 developments
delivered

45

Years
experience

53

International
awards



Value adding services

Property management

Rentals

Resales

Cleaning

Maintenance & repairs

Landscaping & gardening

Vida

S U I T E S

The contents and information contained in this document is intended for general marketing purposes only and must not be construed as advice, or being complete and accurate nor be relied upon as such. The photographs of the surrounding views and location may have been digitally enhanced or altered and do not represent actual views or surrounding views. These photographs and CGIs are indicative only. Fittings and finishes are subject to availability and company's discretion. Prospective purchasers should make and must rely on their own enquiries. This brochure is a guide only and does not constitute an offer or contract. Neither the company nor any of its directors or employees give any representation or warranty as to the reliability of the information contained herein, and shall not be responsible and disclaim all loss, liability or expense of any nature whatsoever which may be attributable (directly, indirectly or consequentially) to the use of the information provided.