

LANNA

VILLAS



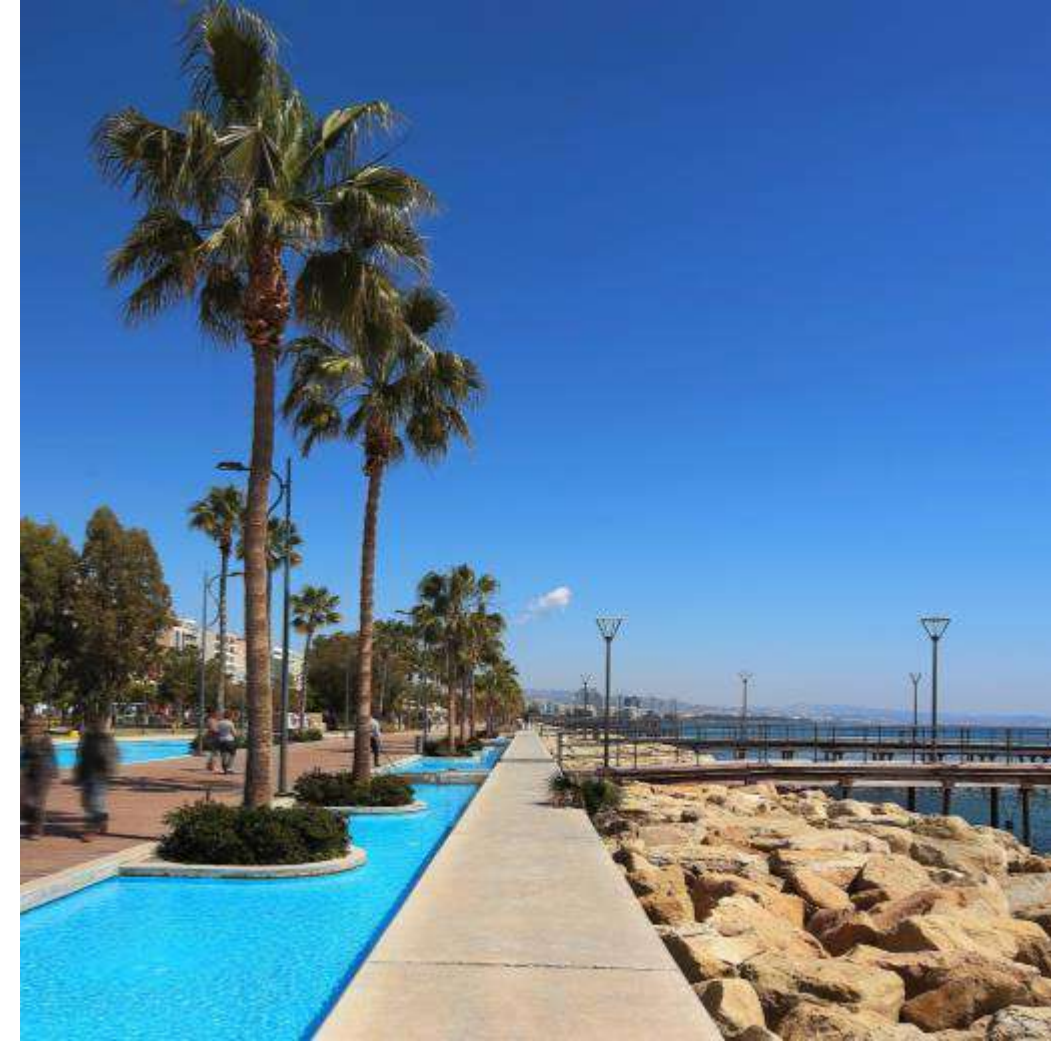


# LIMASSOL

## THE CITY OF CHOICE

Limassol is Cyprus' cosmopolitan capital, its most important business district and a vibrant modern playground. It is consistently ranked as one of the world's leading cities for quality of life. Nowhere in Cyprus is there a richer mix of modern culture and fascinating heritage.





Limassol's enchanting promenade is situated on the prime seafront boulevard. It is the ideal place for walking, jogging, spending time on the beach or taking time for peaceful contemplation under the shade of a mature palm tree.





# Vibrant Limassol

The city offers an active, vibrant and varied choice of restaurants, stylish cafes, bars and chic lounges.







A MIX OF FINE AND CASUAL DINNING

# An Adventure in Taste

Limassol's gastronomic scene comprises a delicious mix of fine and casual dining. It offers a great selection of cuisines as well as local traditional food.

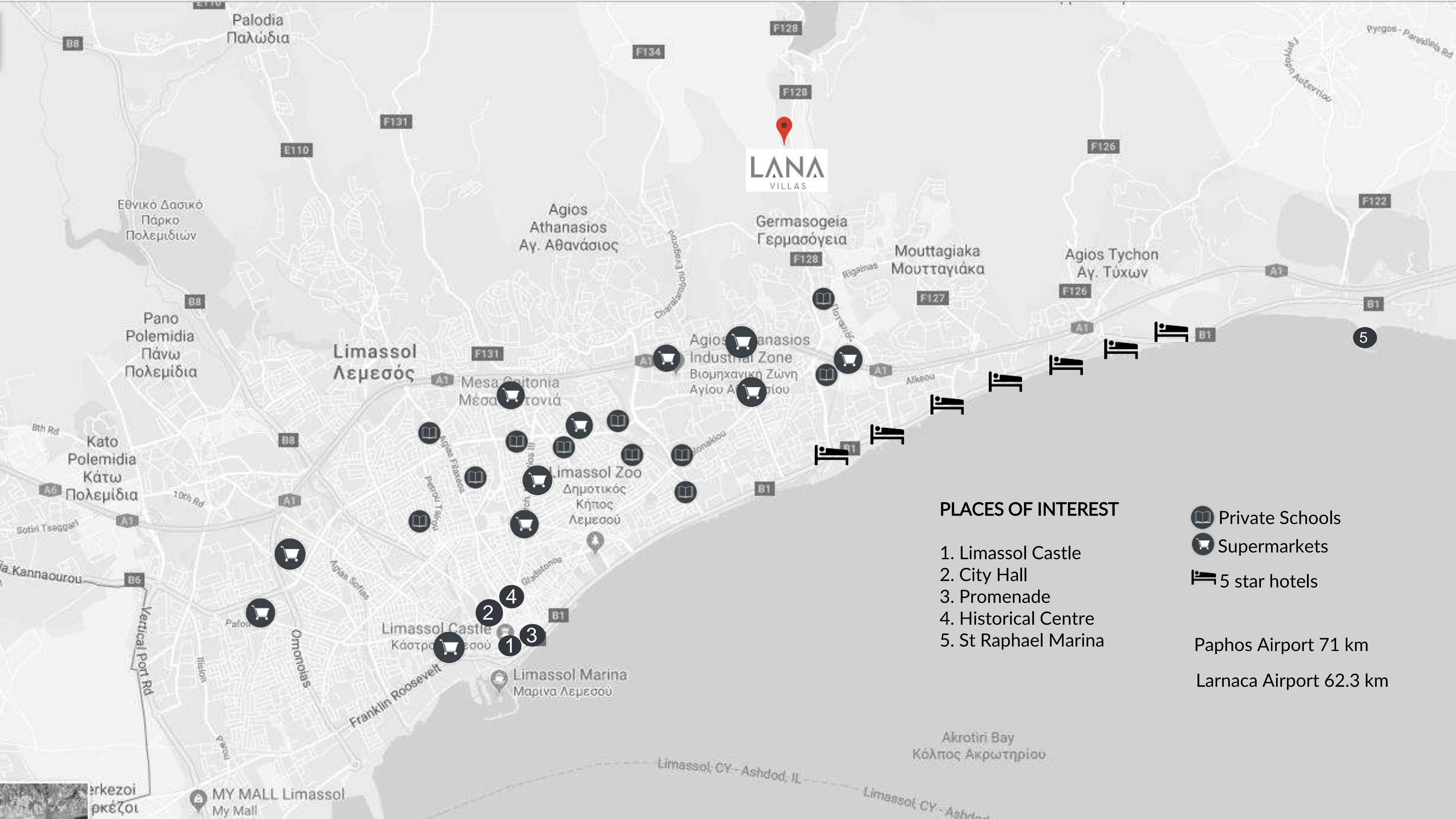


# Private Schools

There are a number of private schools (Greek, English, French, and Russian) available in Limassol.





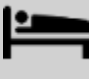




**LANA**  
VILLAS

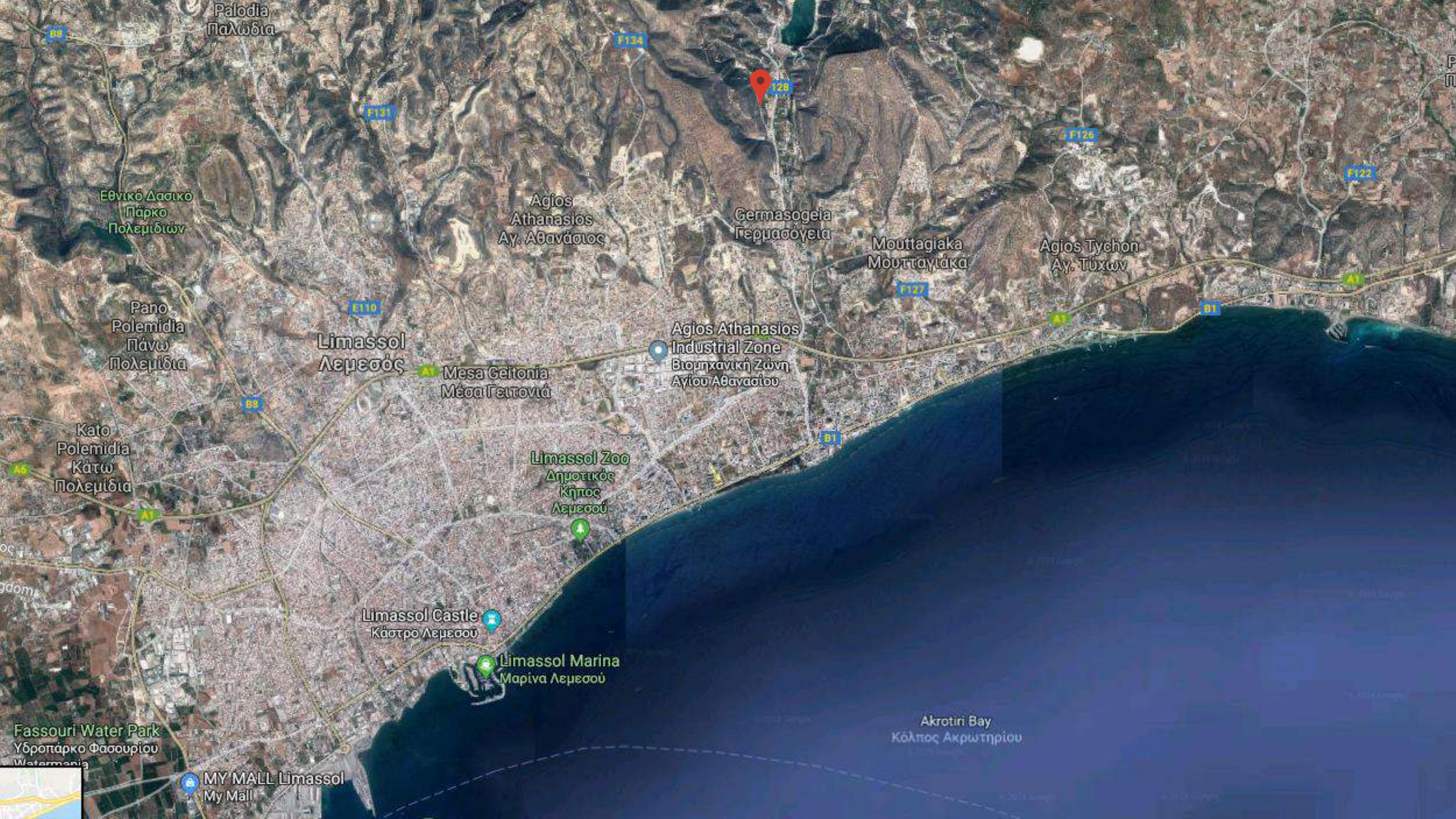
**PLACES OF INTEREST**

- 1. Limassol Castle
- 2. City Hall
- 3. Promenade
- 4. Historical Centre
- 5. St Raphael Marina

-  Private Schools
-  Supermarkets
-  5 star hotels

Paphos Airport 71 km  
Larnaca Airport 62.3 km





Palodia  
Παλώδια

B3

F134

F131

F126

F122

Εθνικό Δασικό  
Πάρκο  
Πολεμιδίων

Agios  
Athanasios  
Αγ. Αθανάσιος

Germasogeia  
Γερμασόγεια

Moutagiaka  
Μουτταγιάκα

Agios Tychon  
Αγ. Τύχων

F127

B1

Pano  
Polemida  
Πάνω  
Πολεμίδα

Limassol  
Λεμεσός

E110

Mesa Geitonia  
Μέσα Γειτονιά

Agios Athanasios  
Industrial Zone  
Βιομηχανική Ζώνη  
Αγίου Αθανασίου

B9

Kato  
Polemida  
Κάτω  
Πολεμίδα

Limassol Zoo  
Δημοτικός  
Κήπος  
Λεμεσού

B1

Limassol Castle  
Κάστρο Λεμεσού

Limassol Marina  
Μαρίνα Λεμεσού

ος

gdom

Akrotiri Bay  
Κόλπος Ακρωτηρίου

Fassouri Water Park  
Υδροπάρκο Φασουρίου  
Watermania

MY MALL Limassol  
My Mall





# A Five Star Location

Lana Villas is located minutes away from all Limassol's 5-star hotels.



**Four Seasons Hotel**



**Amathus Beach Hotel**



**Grand Resort**



**Amara Hotel**



**Parklane Resort**



# Amenities

AMENITIES NEAR LANA VILLAS



Bakery 4 km



Convenience store 2.8 km



Private English School 5 km



Private Hospital 7 km



Pharmacy 2.8 km



Petrol Station 4.2 km



Tavern 2.4 km



Bank 4 km



Views from the plot





Views from the plot







## CAFES & BARS

Just 4 km away from a wide selection of chic cafes and beach bars.



## MARINA

Just 10 km away Saint Raphael Marina offers 237 berth marina with all amenities, accommodating boats up to 30m.

## SANDY BEACHES

A selection of sandy beaches are within 5 km away.





Located in desirable hills of Limassol, Lana Villas comprises 6 luxuriously appointed 3-bedroom residences, which harmoniously blend with their natural surroundings. Lana Villas are within a short drive of award-winning sandy beaches, close to a plethora of shops, restaurants and other amenities, yet offer a serene environment and tranquillity.



Villas 5 & 6



View from Villas 1.2, 3, 4





View from Villas 1.2, 3, 4



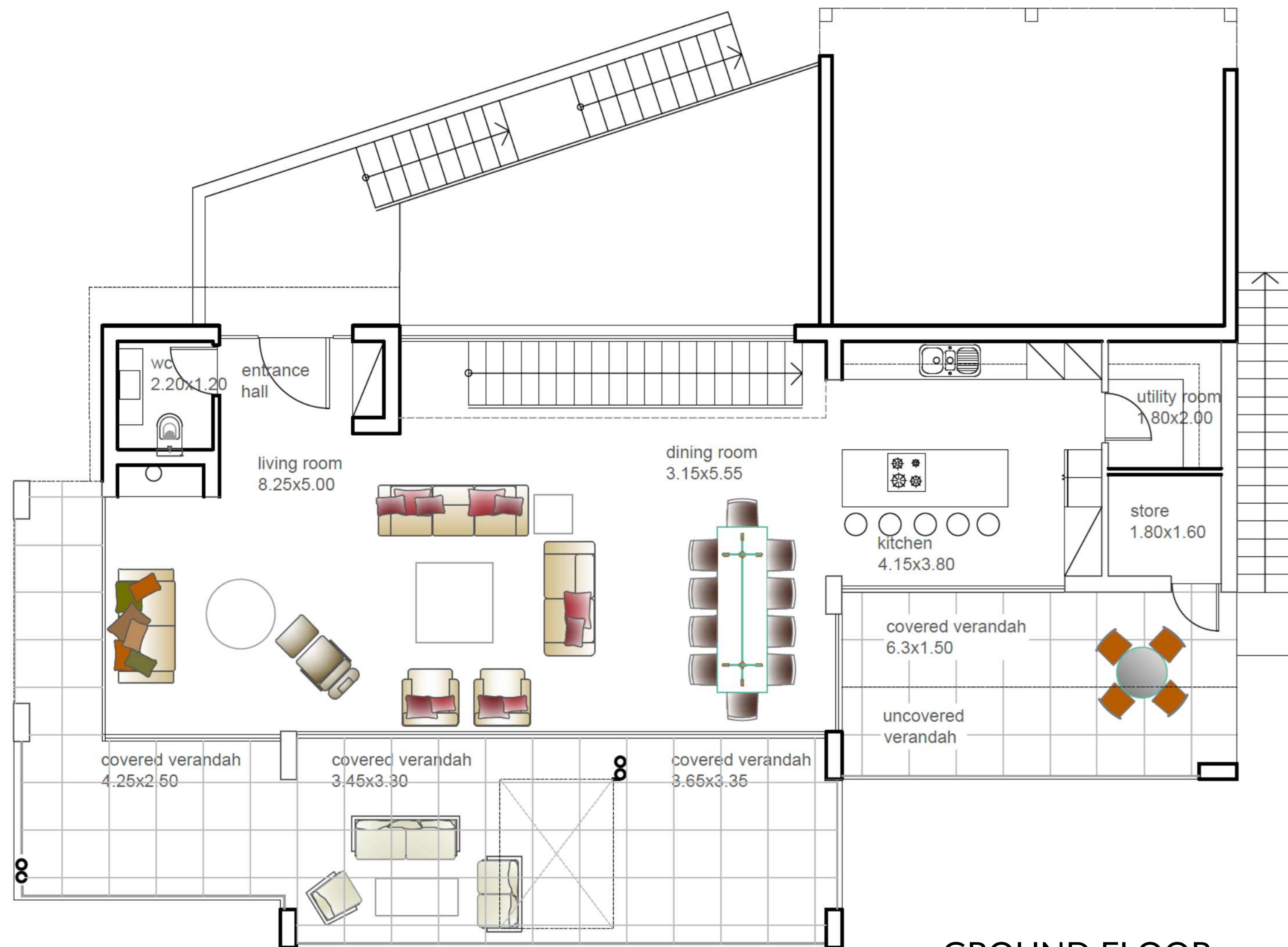


# SITE PLAN





# FLOOR PLANS – VILLA 1.2

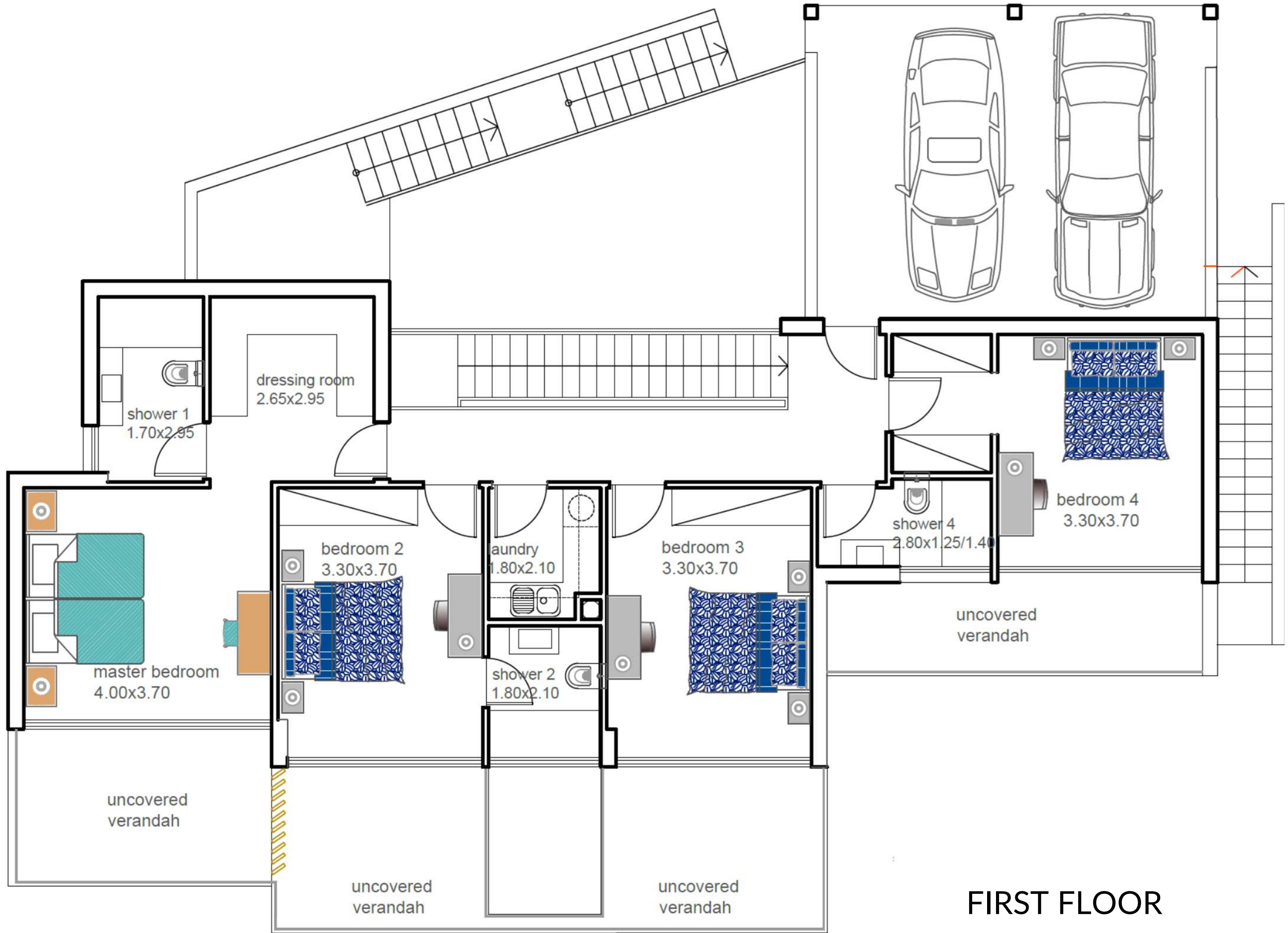


GROUND FLOOR

- Bedrooms | 4
- Bath | 4 ( 2 en suite)
- Covered Area m<sup>2</sup> | 220
- Covered Veranda m<sup>2</sup> | 50
- Total Covered Area m<sup>2</sup> | 270
- Uncovered Veranda m<sup>2</sup> | 52
- Plot m<sup>2</sup>: 890
- Garden: Yes



# FLOOR PLANS – VILLA 1.2







Villa 3



# FLOOR PLANS – VILLA 3

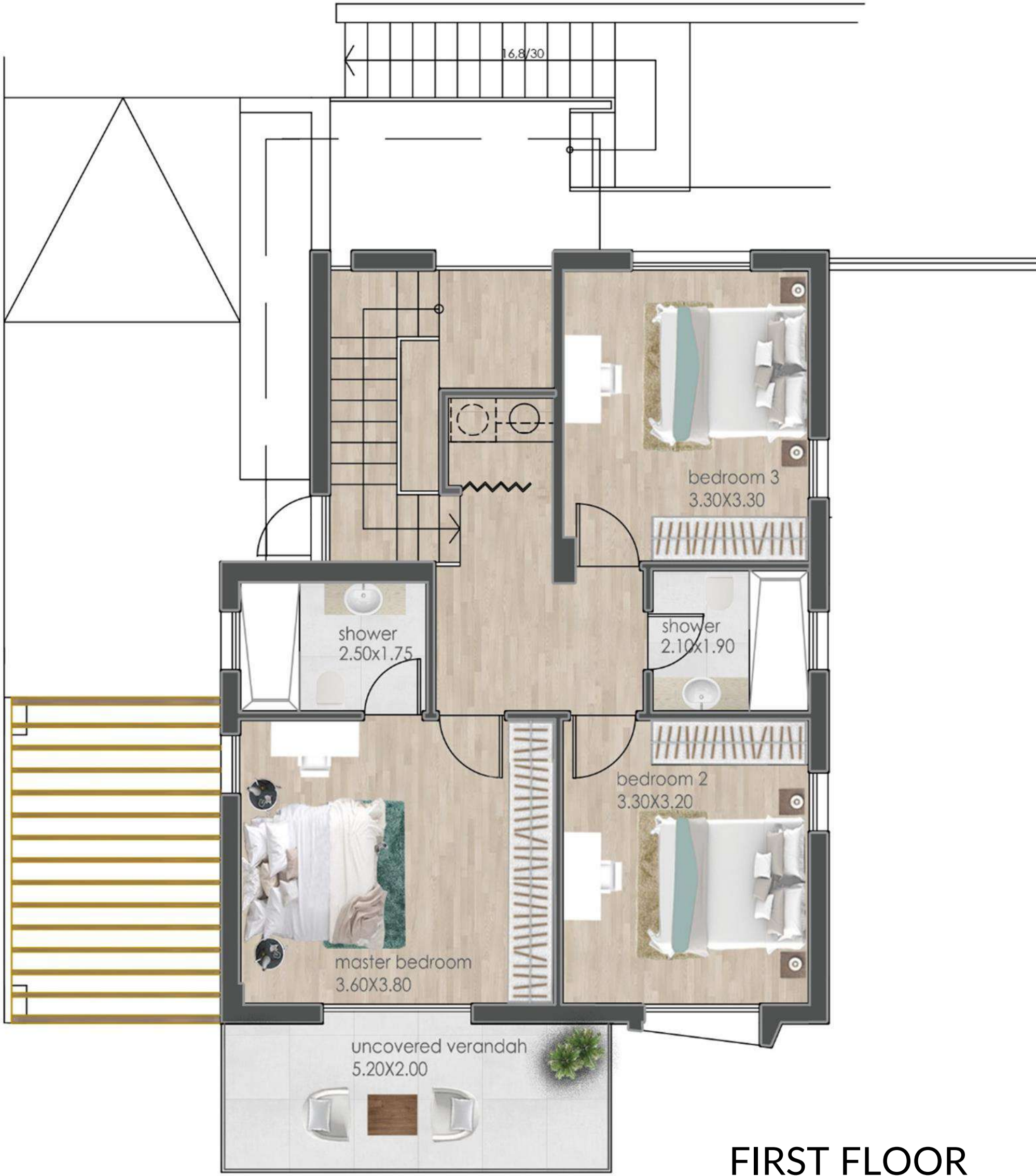


GROUND FLOOR

- Bedrooms | 3
- Bath | 1 (1 en suite)
- Covered Area m<sup>2</sup> | 136.00
- Covered Veranda m<sup>2</sup> | 22.00
- Total Covered Area m<sup>2</sup> | 158.00
- Uncovered Veranda m<sup>2</sup> | 29.00
- Plot m<sup>2</sup>: 380.00
- Garden: Yes



# FLOOR PLANS – VILLA 3



FIRST FLOOR





Villa 3





Villa 3





Villa 3





Villa 3



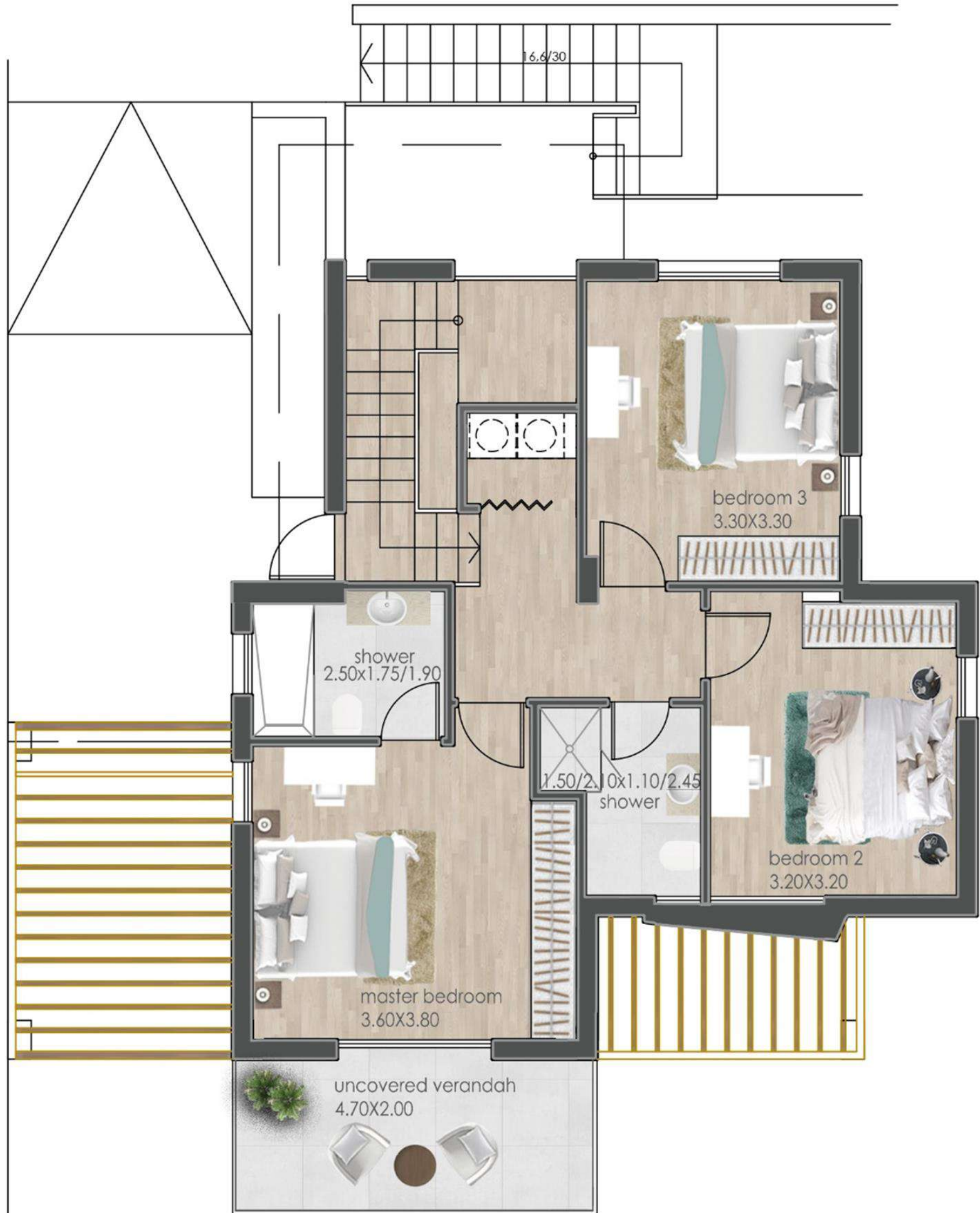
# FLOOR PLANS – VILLA 4



Bedrooms | 3  
Bath | 1 (1 en suite)  
Covered Area m<sup>2</sup> | 136.00  
Covered Veranda m<sup>2</sup> | 23.00  
Total Covered Area m<sup>2</sup> | 159.00  
Uncovered Veranda m<sup>2</sup> | 22.00  
Plot m<sup>2</sup> : 380.00  
Garden: Yes



# FLOOR PLANS – VILLA 4



FIRST FLOOR





Villas 5 & 6



# FLOOR PLANS – VILLAS 5, 6, 7

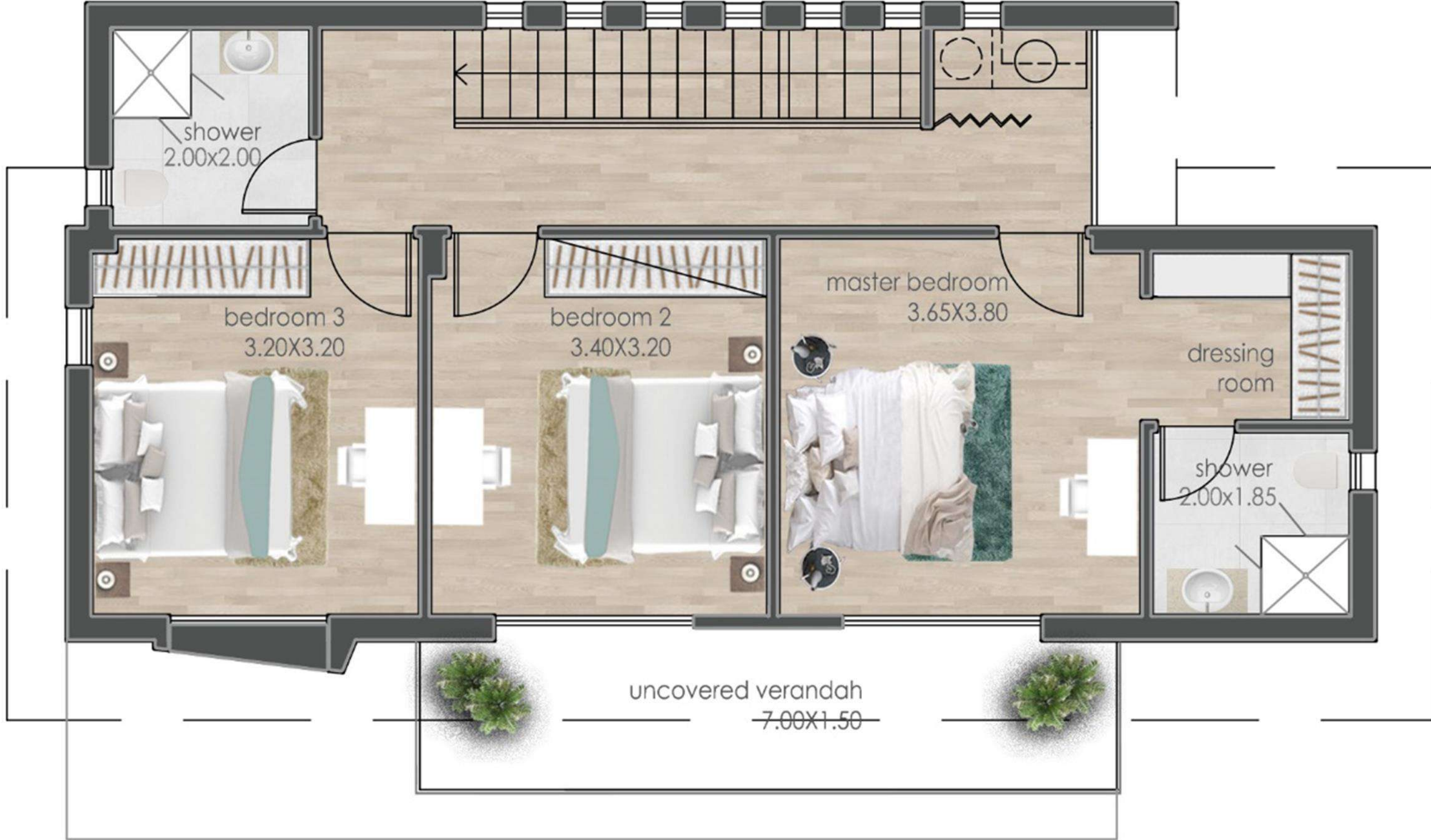


GROUND FLOOR

- Bedrooms | 3
- Bath | 1 (1 en suite)
- Covered Area m<sup>2</sup> | 136.00
- Covered Veranda m<sup>2</sup> | 20.00
- Total Covered Area m<sup>2</sup> | 157.00
- Uncovered Veranda m<sup>2</sup> | 20.00
- Plot V5 m<sup>2</sup> : 310.00
- Plot V6 m<sup>2</sup> : 330.00
- Plot V7 m<sup>2</sup> : 570.00
- Garden: Yes



# FLOOR PLANS – VILLAS 5, 6, 7



FIRST FLOOR





Villas 5, 6, 7





Villas 5, 6, 7



Villas 5, 6, 7







Villas 5, 6, 7





Villas 5, 6, 7



# About us

Delivering outstanding quality, concept and design.

## Our company

Largest private  
Developer in Cyprus

**250**

Over 250 developments  
delivered

**45**

Years  
experience

**53**

International  
awards





# Value adding services

Property management

Rentals

Resales

Cleaning

Maintenance & repairs

Landscaping & gardening



# LANNA

## VILLAS

The contents and information contained in this document is intended for general marketing purposes only and must not be construed as advice, or being complete and accurate nor be relied upon as such. The photographs of the surrounding views and location may have been digitally enhanced or altered and do not represent actual views or surrounding views. These photographs and CGIs are indicative only. Fittings and finishes are subject to availability and company's discretion. Prospective purchasers should make and must rely on their own enquiries. This brochure is a guide only and does not constitute an offer or contract. Neither the company nor any of its directors or employees give any representation or warranty as to the reliability of the information contained herein, and shall not be responsible and disclaim all loss, liability or expense of any nature whatsoever which may be attributable (directly, indirectly or consequentially) to the use of the information provided.