

# KONIA GREEN



VILLAS AND TOWNHOUSES



## LOCATION - KONIA

Konia Green comprises 34 detached villas and 26 townhouses situated around a central green park. The contemporary development is set in a prestigious hillside suburb of Paphos, Konia, which is well known for its magnificent sunsets.

The village is favoured by locals and has a vibrant ex-pat community thanks to its convenient location and traditional amenities.

The area is located just 3km or 5 minutes away by car to the town centre of Paphos and the largest International School in the region, making this the perfect family location.



## RICH HISTORY AND VIBRANT COMMUNITY

Konia has an interesting and rich history, this combined with its modern facilities make it an ideal place to call home. Central to the village is a large Church, some traditional tavernas or restaurants that serve Cypriot cuisine made with fresh and local farmed products. There is a pharmacy and some convenience stores.

Annually, there is a summer festival where the public school of Konia perform in the square with joyful traditional Cypriot music and games.

Within Konia there is also a number of community parks, which are useful for families with children as there is a basketball and multi-functional court, climbing frames, swings and slides, as well as a safe and commonplace for teenagers to meet up.





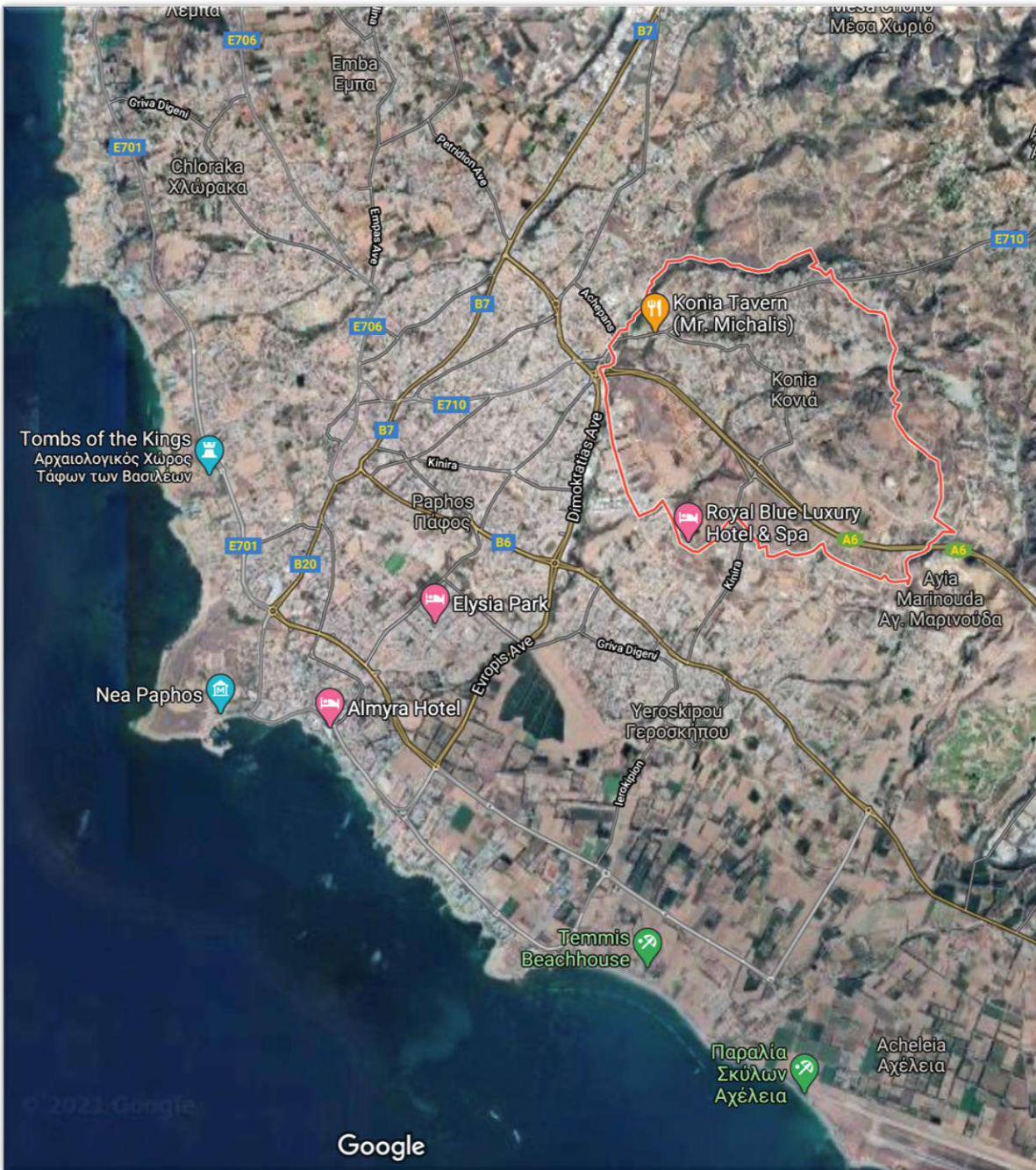
## A SENSE OF FAMILY

Within Konia there are a number of well maintained community parks and children's playgrounds which include basketball and multi functional court, climbing frames, swings and slides, as well as a safe and common place for family and friends to meet up.



2 CHILDRENS PARKS WITHIN  
5 MINUTE WALK

Konia, Park Area





## ACCESSIBILITY


Konia has very good direct links to the motorway, easily connecting it with Paphos as well as other major cities of Cyprus such as Limassol. There are frequent bus links within and on the outskirts of Konia and its an easy 5 minute drive to the town or beach.

## PLACES OF INTEREST

1. Pafos Castle
2. Kato Pafos Archeological Park
3. Paphos Mosaics
4. Tomb of the Kings
5. Town Centre

 PRIVATE SCHOOLS  
International School  
Aspire School

 Supermarkets

 Hospitals

## A GREAT LOCATION

Shopping **5mins**

Town Center **5mins**

Hotels **12mins**

Highway **3mins**

Beach **12mins**

Bank **6mins**

Port **15mins**

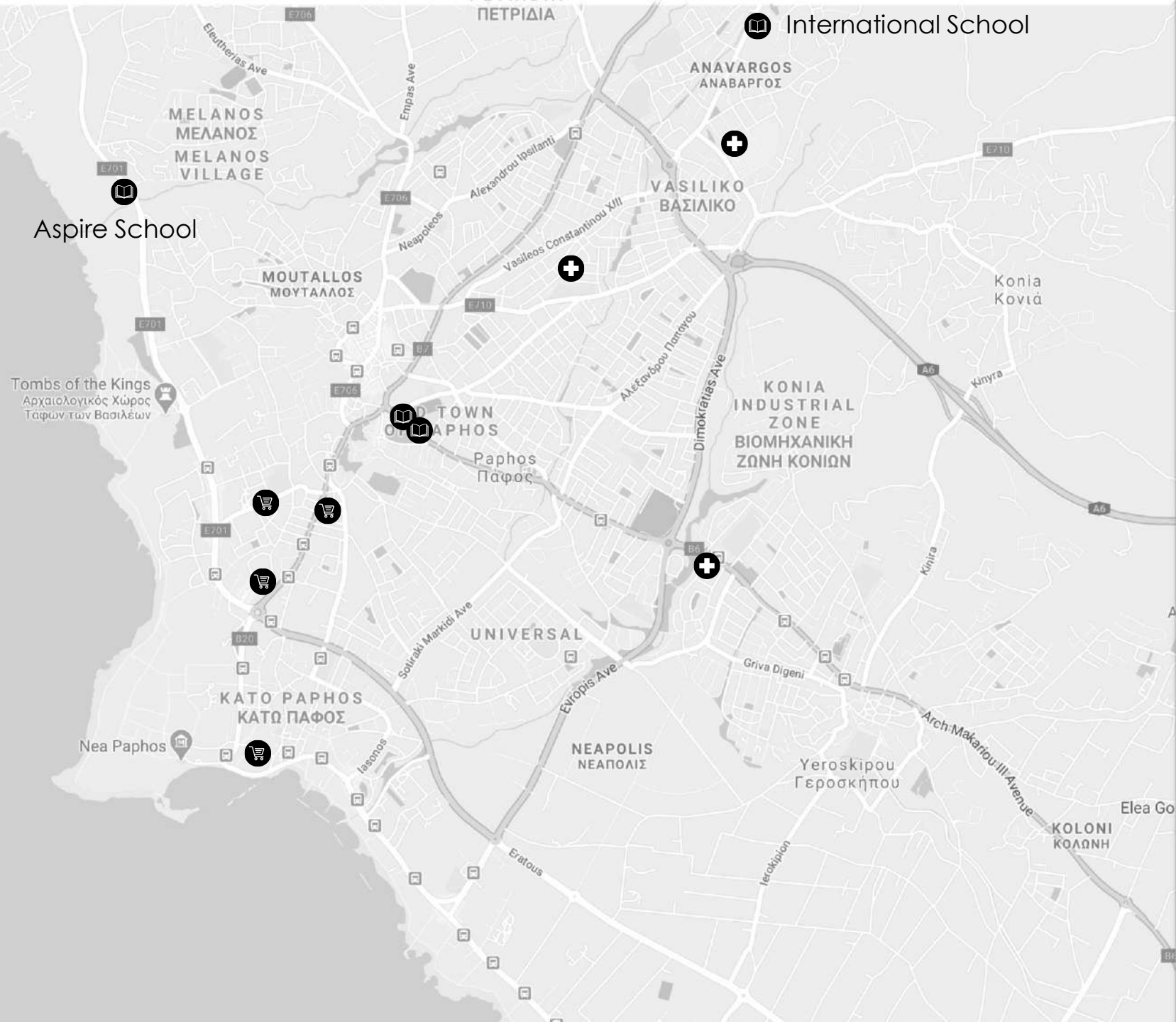
Pafos airport **12mins**

Larnaka airport **80mins**

Troodos **73mins**

Limassol **40mins**

Nicosia **95mins**





# MASTER PLAN

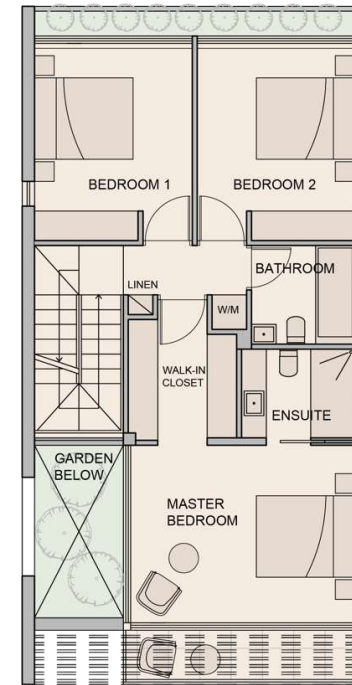
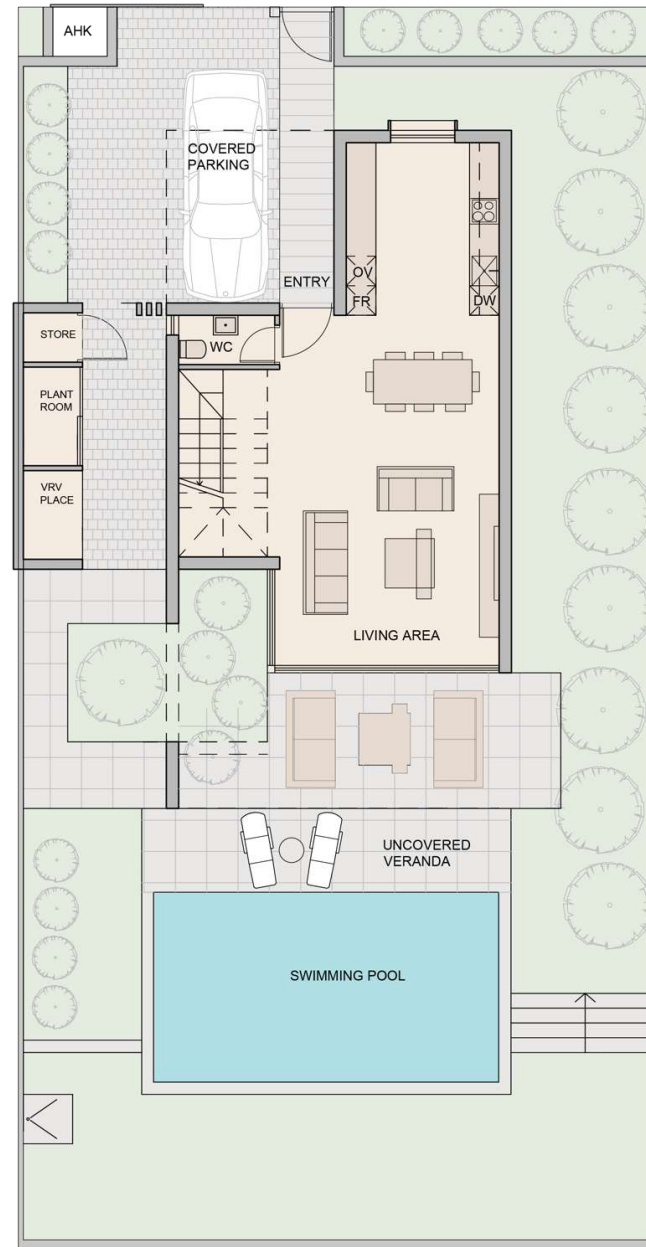


# TYPE A

- 3 Bedrooms
- Seamless Open-plan Living
- Mediterranean Garden
- High Specification Finishes
- Optional Pool
- Covered Parking



# TYPE A



# TYPE A





TYPE A

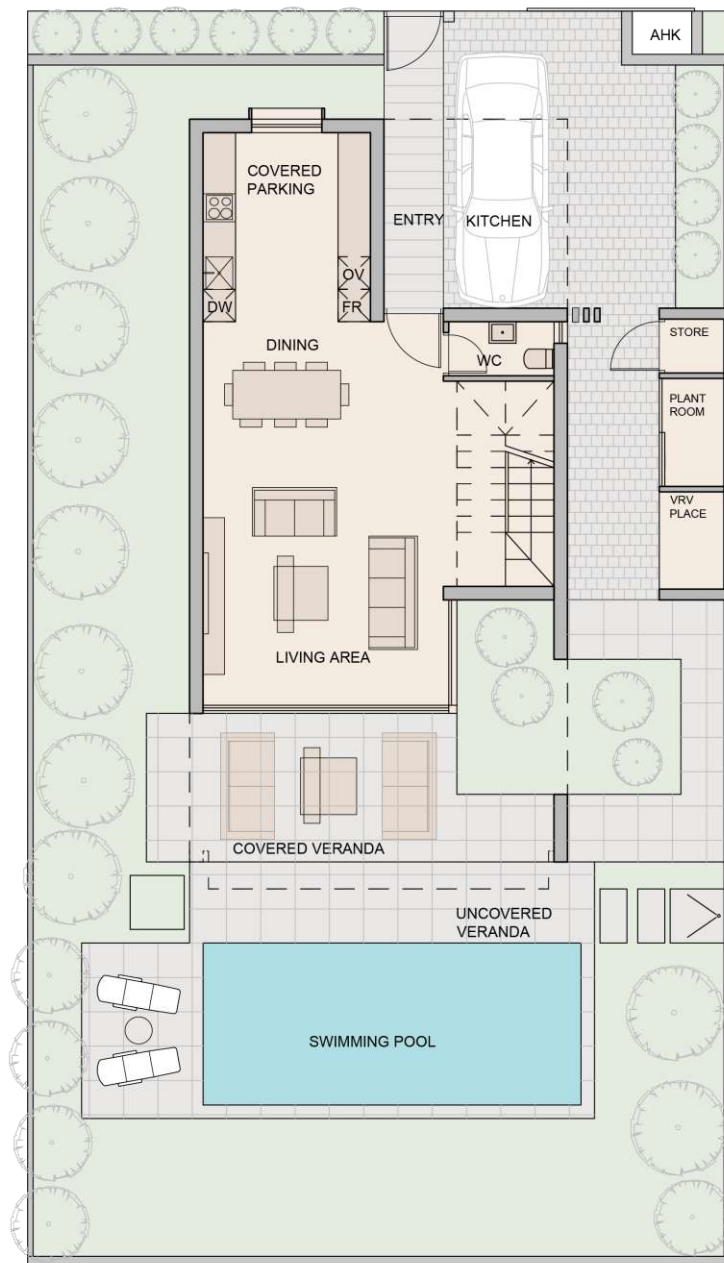


## TYPE B

- 3 Bedrooms
- Seamless Open-plan Living
- High Specification Finishes
- Mediterranean Garden
- Optional Pool
- Covered Parking



# TYPE B





TYPE B



# TYPE B

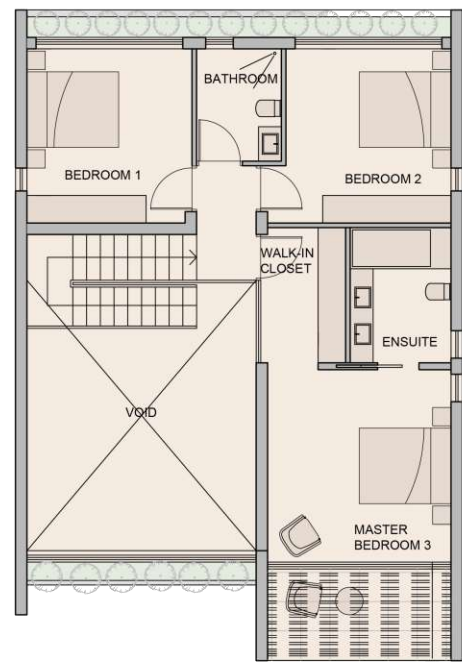
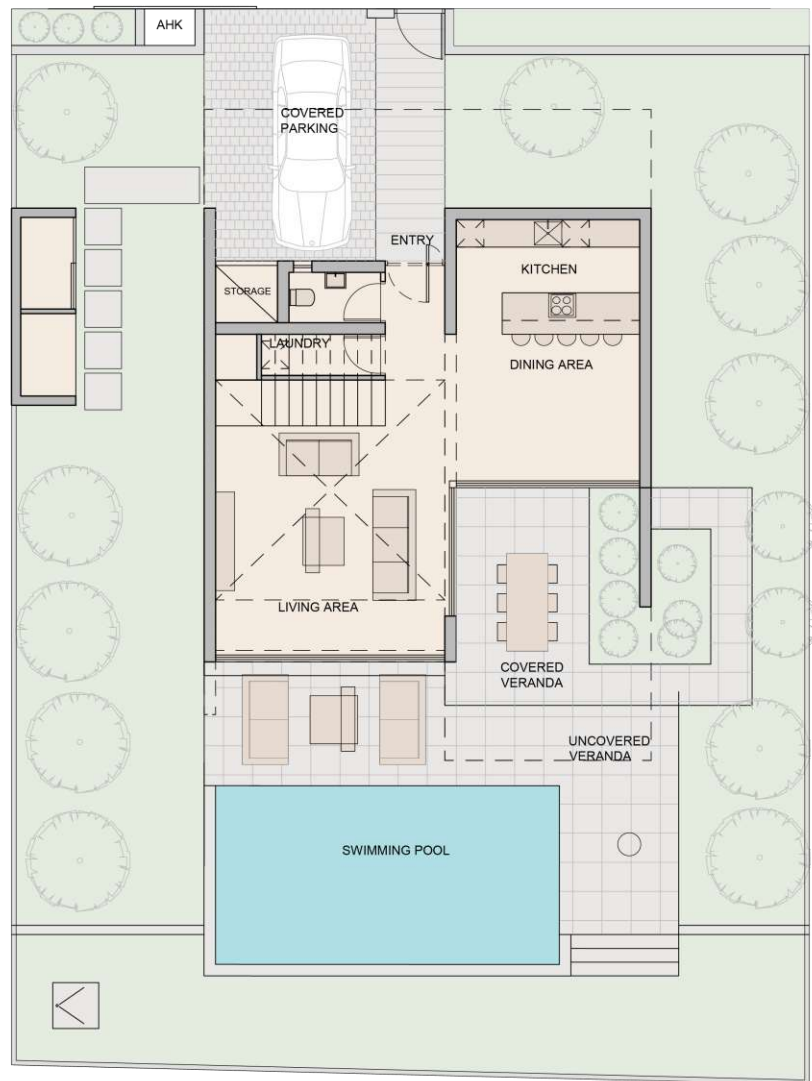


# TYPE C

- 3 Bedrooms
- Exceptional Design Features
- Double Height Living Area
- Seamless Open-plan Living
- High Specification Finishes
- Walk-in Closet
- Mediterranean Garden
- Optional Pool
- Covered Parking



# TYPE C



# TYPE C





TYPE C

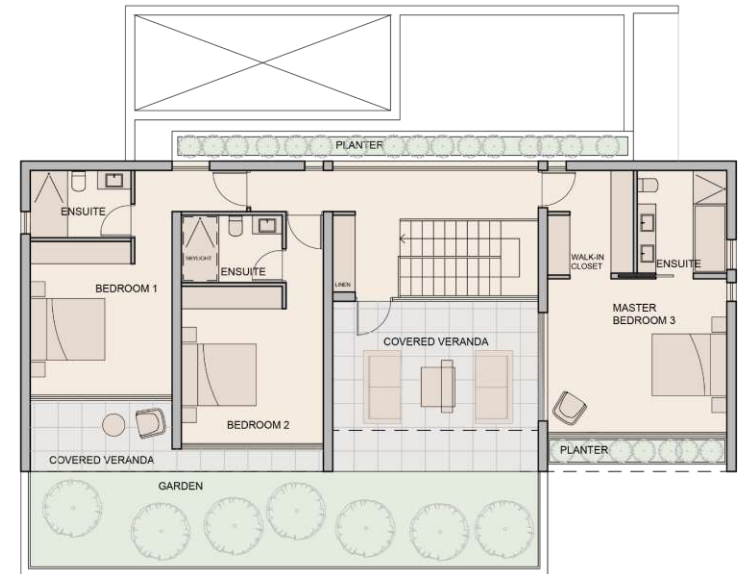
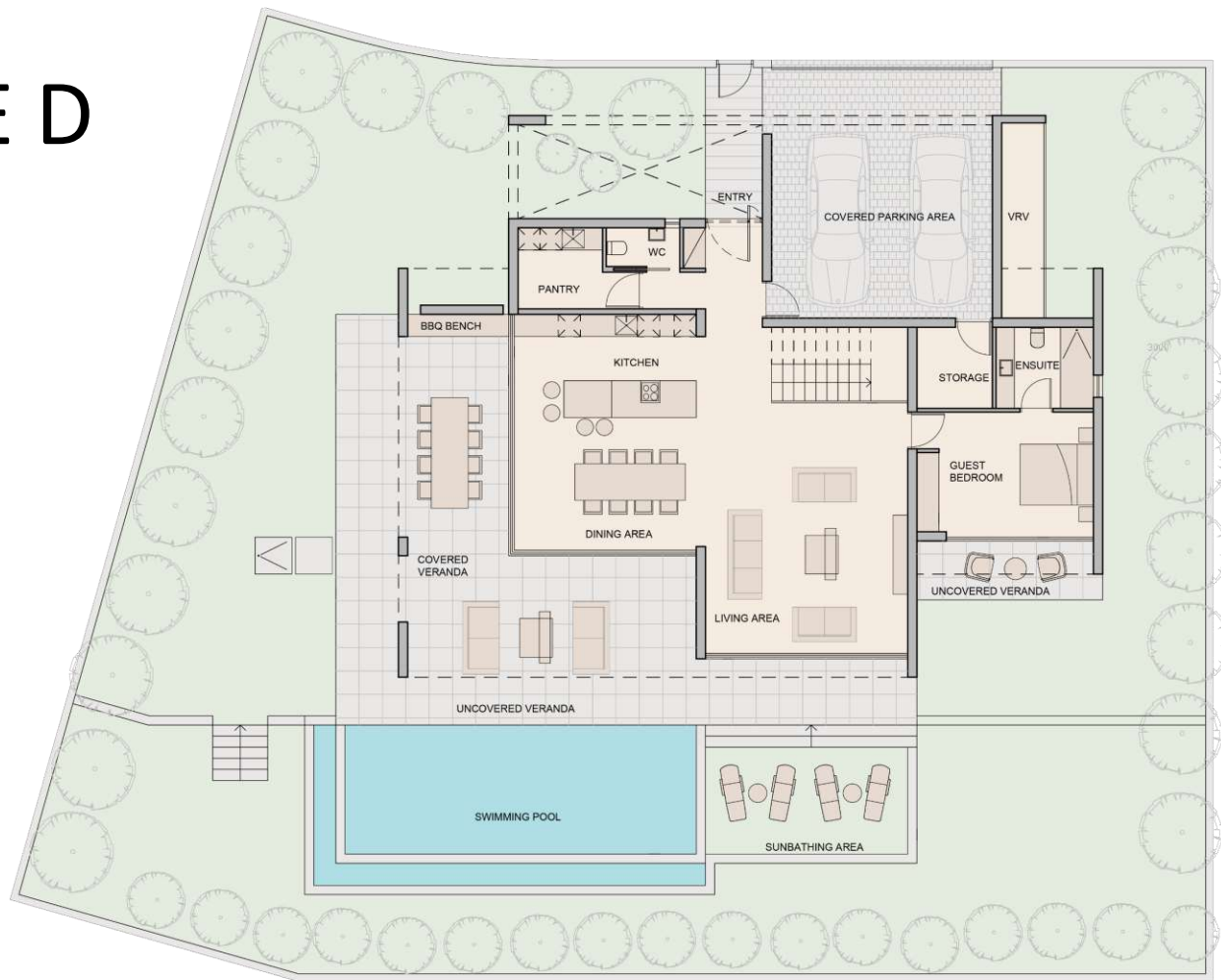


## TYPE D

- 3 Bedrooms
- Exceptional Design Features
- Large Covered Verandas
- Seamless Open-plan Living
- High Specification Finishes
- Walk-in Closet
- Mediterranean Garden
- Optional Pool
- Covered Parking



# TYPE D



# TYPE D







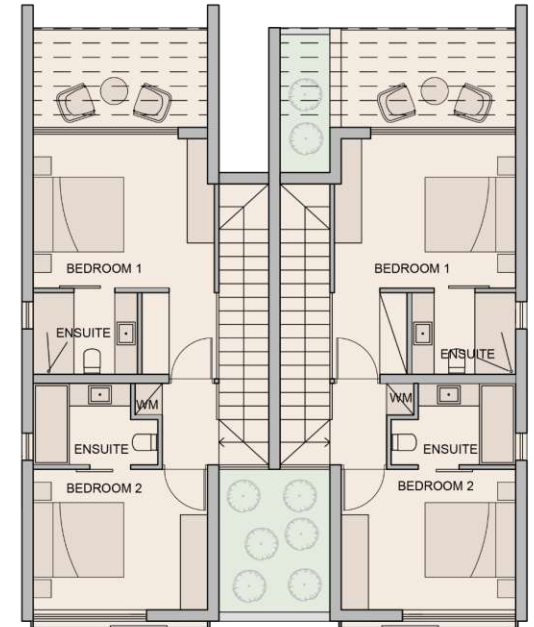
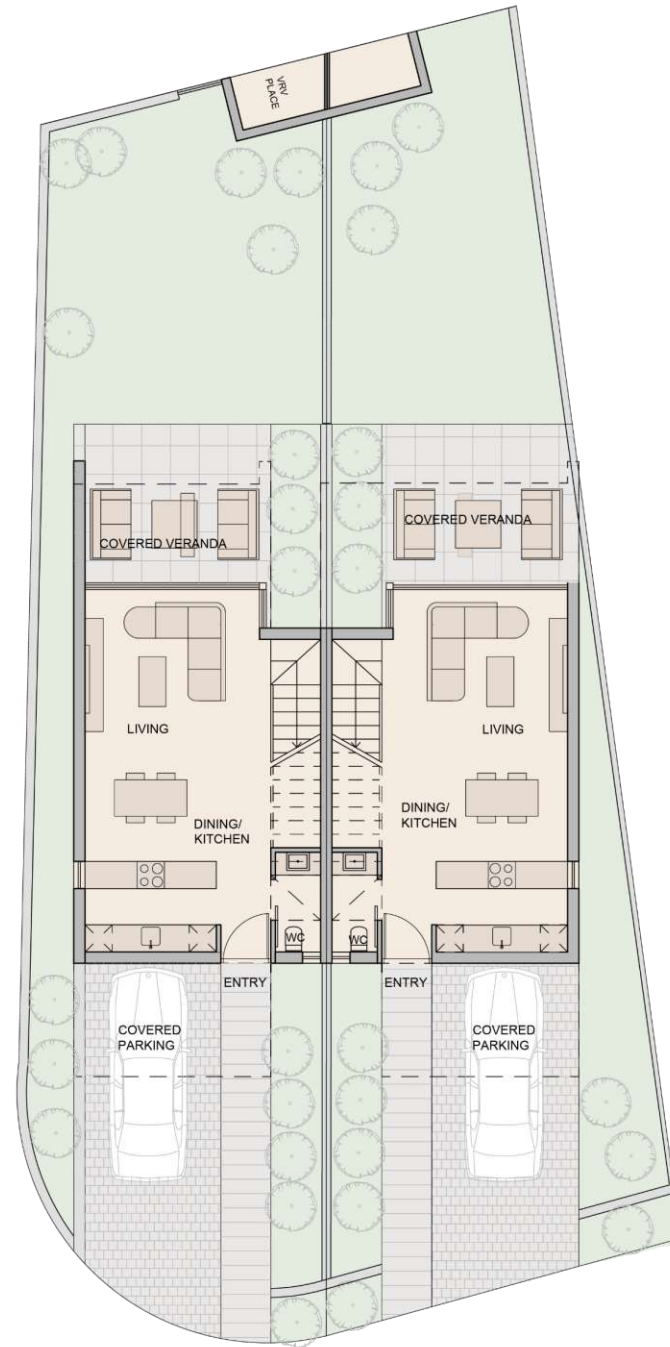
TYPE D

# TOWNHOUSE

- 2 Bedrooms
- Contemporary Design
- Seamless Open-plan Living
- Mediterranean Garden
- Covered Veranda on both levels
- Covered Parking



# TOWNHOUSE





TOWNHOUSE

# TOWNHOUSE



# FINISHES

All homes enjoy a high-quality finish internally and externally. The architect has used clean modern lines with natural materials and open spaces to achieve a perfect balance of design and practicality.





## THE CITY OF BEAUTY

Pafos, with its charming harbour and medieval fort, offers cosmopolitan living, beautiful scenery and significant historical sites. It was the capital of Cyprus for 600 years in ancient times and its archaeological legacy is such that UNESCO put the whole town on its World Cultural Heritage list.

# PAFOS

Pafos' historic city charm is complemented by a vast array of stunning beaches, perhaps the best on the island, an excellent selection of stylish cafes and restaurants, modern amenities, a buzzing nightlife and many interesting attractions. It is also home to Cyprus' national park, the Akamas.

- Harbour Castle
- Petra tou Romiou
- Archaeological Park
- Mosaics
- Tombs of the Kings
- Coral Bay
- Akamas
- Kings Avenue Mall
- Traditional Villages





# AMENITIES

Near Konia Green



Bakery  
2 km



Supermarket  
4 km



Private English  
School 4.6 km



Private Hospital  
4km



Pharmacy  
1Km



Petrol Station  
4 Km



Sporting  
Centre 6 Km



Café / Restaurant  
350 m



## UNESCO WORLD HERITAGE SITE

The town of Pafos is of outstanding universal value and it is included in the official UNESCO list of cultural and natural treasures of the world heritage. These historical sites date back thousands of years and include ancient theatres and colorful mosaics, to impressive fortresses and underground tombs.



## MEDITERRANEAN LIFESTYLE

Konia Green is ideally located 5 minutes centre of Pafos town, within walking distance from a varied choice of stylish cafes, bars and chic lounges.



## TRADITIONAL & CONTEMPORARY DINING



Pafos is well known for its seafood and local produce, and as such its local restaurants are known for the quality and freshness of their cuisine. Pafos offers a wide selection of traditional taverns, family-friendly restaurants, stylish cafés and some of the best seafood restaurants on the island.

# HISTORIC CENTRE

The beautiful historic center of Pafos, the Town hall and square are located within a 8-minute drive from Konia Green.



Pafos Town Hall



Pafos Municipal Library



Town Hall Square



## A FIVE STAR LOCATION

Konia Park 3 is located minutes away from Pafos' 5 star hotels.



Elysium Hotel



Annabelle Hotel



Almyra Hotel

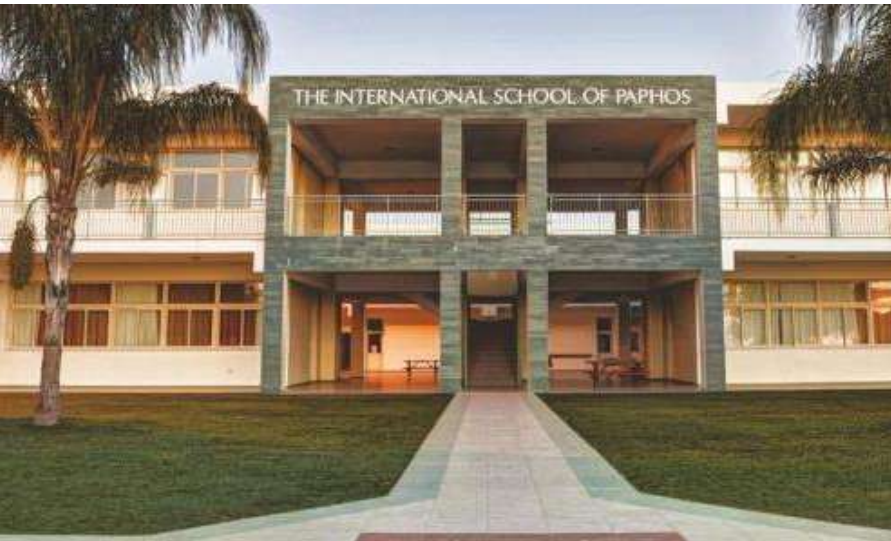


Olympic Lagoon  
Resort



Athena Beach Hotel

# PRIVATE SCHOOLS



The private schools offer a well balanced education based on the English National Curriculum





THE  
INTERNATIONAL SCHOOL  
OF PAPHOS PRIVATE

The International School has been registered with the Cyprus Ministry of Education and Culture since 1987. It has strong links with the British Council and is registered as a centre with two of the most esteemed and well-known Examination Boards in England: Edexcel and CIE (Cambridge International Examinations).

The school follows the English National Curriculum, but has a more flexible approach as it is mindful of the local educational needs and culture. The school moved to new premises in 2006 which offer excellent classroom, leisure and recreation facilities. The school caters to children from Kindergarten to sixth form, preparing them for university.

[www.paphosinternationalschool.com](http://www.paphosinternationalschool.com)



PRIVATE  
BRITISH SCHOOL



Aspire offers the UK National Curriculum: leading to GCSE, IGCSE and A level qualifications. Delivered by qualified and experienced teachers who recognise the importance of an inspirational learning environment. The ethos of ASPIRE Private British School is promoted in various ways including: Excellent teaching standards, positive reinforcement, Student Awards, competitive house system, displaying exceptional work and celebrating achievement.

Children have to be fluent in English before joining the classroom. Children who are not fluent in the language will spend time in our booster English class and slowly be integrated back into their school year as their fluency improves. The children work towards GCSE and A Level qualifications which can take them on to any UK, American or worldwide university. We are a fully licensed registered exam centre so children can take their exams in their familiar school surroundings.

[www.aspirecoe.com](http://www.aspirecoe.com)



# KONIA GREEN

The contents and information contained in this brochure are intended for general marketing purposes only and must not be construed as advice, or being complete and accurate nor be relied upon as such. The photographs of the surrounding views and location may have been digitally enhanced or altered and do not represent actual views or surrounding views. These photographs are indicative only. Fittings and finishes are subject to availability and company's discretion. Prospective purchasers should make and must rely on their own enquiries. This brochure is a guide only and does not constitute an offer or contract. Neither the company nor any of its directors or employees give any representation or warranty as to the reliability of the information contained herein, and shall not be responsible and disclaim all loss, liability or expense of any nature whatsoever which may be attributable (directly, indirectly or consequentially) to the use of the information provided.